



DEPARTMENT OF THE NAVY
NAVAL STATION GREAT LAKES
2601E PAUL JONES STREET
GREAT LAKES IL 60088-2845

5000-45
Ser N4/134
May 17, 2024

Ms. Carol Wallace
Cultural Resources Coordinator
Illinois State Historic Preservation Office
Illinois Department of Natural Resources
1 Natural Resources Way
Springfield, IL 62702

Dear Ms. Wallace:

SUBJECT: DEMOLITION OF PEDESTRIAN BRIDGE 113H, FULFILLMENT OF
MEMORANDUM OF AGREEMENT MITIGATION MEASURES,
NAVAL STATION GREAT LAKES, ILLINOIS, [STATE HISTORIC
PRESERVATION OFFICE LOG #014060316]

On 13 May 2024, the Illinois State Historic Preservation Office (SHPO) was the final signatory agency on a memorandum of agreement (MOA) between itself and the Department of the Navy regarding the demolition of pedestrian bridge 113H (S113H) at Naval Station Great Lakes (NSGL). As stipulated in the MOA, the following mitigation measures shall be provided:

Stipulation 1a(1) – Digital photographs that meet or exceed the most recent National Register *Photo Policy Fact Sheet*. The photographs will document the breadth of the structure, to include the foundations and undercarriage.

Stipulation 1a(2) – Existing measured drawings, of the bridge, adding up-to-date information to the body of knowledge, which include partials plans from 1942, 1946, and 1988.

Stipulation 1a(3) – Updated SHPO survey inventory forms with up-to-date, accurate data.

Stipulation 1a(4) – The final documentation photography shall be completed prior to any construction activities occurring.

Stipulation 1a(5) – Upon completion of the documentation, the Navy shall retain a complete digital record at NSGL and the documentation shall be provided to SHPO for retention.

Enclosed please find documents containing: 40 high-resolution digital photos in TIFF format as well as a photographic log listing the descriptive view of each photo per the requirements of the National Register Photo Policy; all available existing measured drawings of the bridge dating from 1942, 1946, and 1988; and a revised SHPO survey form, containing updated construction information and National Register eligibility.

5000-45
Ser N4/134
May 17, 2024

This letter is being submitted to provide documentation regarding the fulfillment of the mitigation measures as stipulated in the MOA for the demolition of S113H. NSGL respectfully requests your review and concurrence concerning the satisfactory completion of the mitigation within 30 days of receiving this letter. Should you have any questions, the point of contact on this matter is Mr. John Haggerty at (847) 688-5395 EXT 162 or john.haggerty24.civ@us.navy.mil.

Sincerely,

A handwritten signature in black ink, appearing to read "M. T. Wollert", with a long horizontal line extending to the right.

M. T. WOLLERT
Installation Environmental Program Director
By direction
of the Commanding Officer

- Enclosures:
1. Digital Photo Documentation
 2. Measured Drawings
 3. Updated Survey Inventory Forms







Enclosure (1)

















Enclosure (1)





Enclosure (1)





Enclosure (1)

































Enclosure (1)





Enclosure (1)











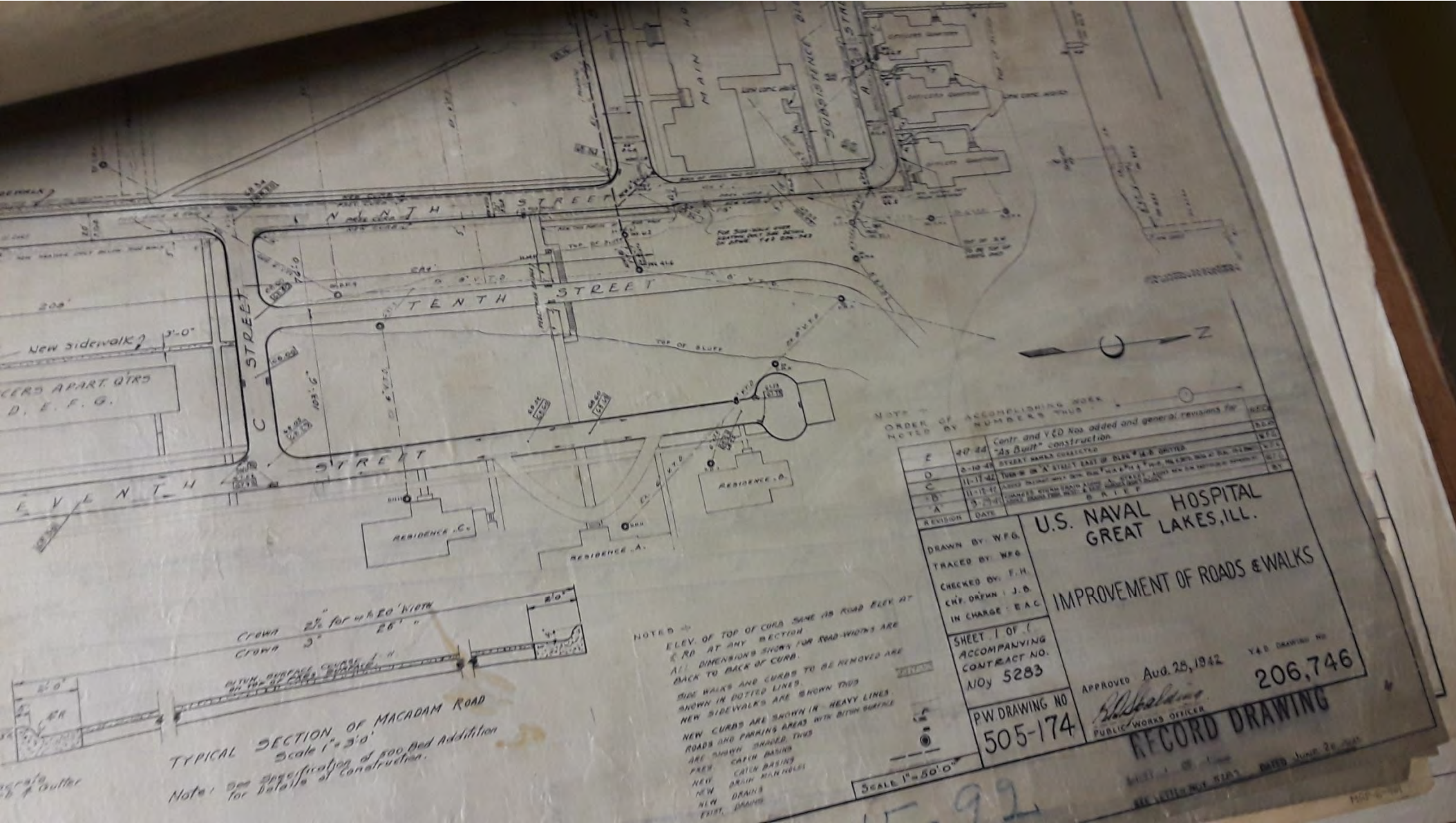




Photograph log - MOA Mitigation for the Demolition of 10st Street Pedestrian Bridge (15 May 2024)

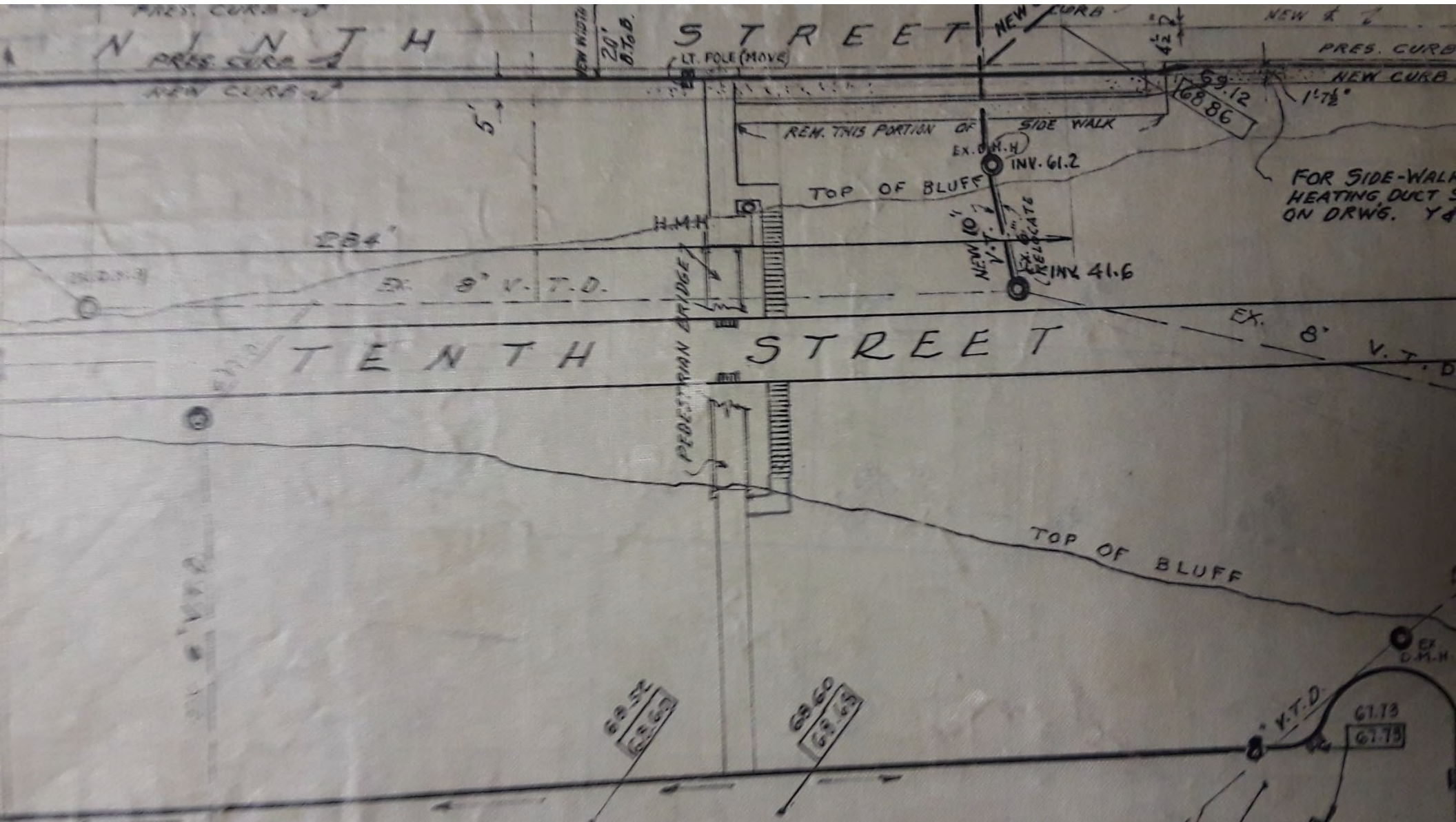
Name of Property	City	County	State	Photographer	Date of Photograph	Location of Original Digital Files	Photo #	Description of Photo
Pedestrian Bridge 113H	Great Lakes	Lake	IL	John Haggerty	9-Apr-24	310 Seabee Way, NSGL, IL, 60088	0001	West side of bridge, aligned with the center of bridge deck, looking east over 10th Street.
Pedestrian Bridge 113H	Great Lakes	Lake	IL	John Haggerty	9-Apr-24	310 Seabee Way, NSGL, IL, 60088	0002	West side of bridge, six feet north of bridge, looking east southeast over 10th Street.
Pedestrian Bridge 113H	Great Lakes	Lake	IL	John Haggerty	9-Apr-24	310 Seabee Way, NSGL, IL, 60088	0003	West side of bridge, four feet north of bridge, looking east down the west stairs to 10th Street.
Pedestrian Bridge 113H	Great Lakes	Lake	IL	John Haggerty	9-Apr-24	310 Seabee Way, NSGL, IL, 60088	0004	West side of bridge, four feet north of bridge, looking northeast at the north (top) newel post.
Pedestrian Bridge 113H	Great Lakes	Lake	IL	John Haggerty	9-Apr-24	310 Seabee Way, NSGL, IL, 60088	0005	West side of bridge, four feet north of bridge, looking southeast at the south (top) newel post.
Pedestrian Bridge 113H	Great Lakes	Lake	IL	John Haggerty	9-Apr-24	310 Seabee Way, NSGL, IL, 60088	0006	West side of bridge, two feet south of bridge, looking east northeast at the aluminum guard rails.
Pedestrian Bridge 113H	Great Lakes	Lake	IL	John Haggerty	9-Apr-24	310 Seabee Way, NSGL, IL, 60088	0007	East side of bridge, aligned with center of bridge deck, looking west, overall view.
Pedestrian Bridge 113H	Great Lakes	Lake	IL	John Haggerty	9-Apr-24	310 Seabee Way, NSGL, IL, 60088	0008	East side of bridge, aligned with center of bridge deck, looking west, overall view (enlarged view).
Pedestrian Bridge 113H	Great Lakes	Lake	IL	John Haggerty	9-Apr-24	310 Seabee Way, NSGL, IL, 60088	0009	East side of bridge, four feet south of bridge, looking west northwest at the south elevation.
Pedestrian Bridge 113H	Great Lakes	Lake	IL	John Haggerty	9-Apr-24	310 Seabee Way, NSGL, IL, 60088	0010	East side of bridge, four feet north of bridge, looking west southwest at the north elevation.
Pedestrian Bridge 113H	Great Lakes	Lake	IL	John Haggerty	9-Apr-24	310 Seabee Way, NSGL, IL, 60088	0011	East side of bridge, four feet north of bridge, looking west down the east stairs to 10th Street.
Pedestrian Bridge 113H	Great Lakes	Lake	IL	John Haggerty	9-Apr-24	310 Seabee Way, NSGL, IL, 60088	0012	East side of bridge, two feet north of bridge, looking west southwest at the south (top) newel post.
Pedestrian Bridge 113H	Great Lakes	Lake	IL	John Haggerty	9-Apr-24	310 Seabee Way, NSGL, IL, 60088	0013	East side of bridge, bottom of east stairs, looking west at the north (bottom) newel post (missing).
Pedestrian Bridge 113H	Great Lakes	Lake	IL	John Haggerty	9-Apr-24	310 Seabee Way, NSGL, IL, 60088	0014	North side of bridge, standing on 10th street, looking east up the east stairs.
Pedestrian Bridge 113H	Great Lakes	Lake	IL	John Haggerty	9-Apr-24	310 Seabee Way, NSGL, IL, 60088	0015	North side of bridge, standing on 10th Street, looking west up the west stairs.
Pedestrian Bridge 113H	Great Lakes	Lake	IL	John Haggerty	9-Apr-24	310 Seabee Way, NSGL, IL, 60088	0016	North side of bridge, standing on 10th Street, 25 feet north of bridge, looking south, overall view.
Pedestrian Bridge 113H	Great Lakes	Lake	IL	John Haggerty	9-Apr-24	310 Seabee Way, NSGL, IL, 60088	0017	North side of bridge, four feet north of bridge, east foundation abutment, looking southeast.
Pedestrian Bridge 113H	Great Lakes	Lake	IL	John Haggerty	9-Apr-24	310 Seabee Way, NSGL, IL, 60088	0018	North side of bridge, four feet north of bridge, east 1/4 of north elevation, structural damage.
Pedestrian Bridge 113H	Great Lakes	Lake	IL	John Haggerty	9-Apr-24	310 Seabee Way, NSGL, IL, 60088	0019	North side of bridge, standing on 10th Street, east 1/4 of north elevation, structural damage.
Pedestrian Bridge 113H	Great Lakes	Lake	IL	John Haggerty	9-Apr-24	310 Seabee Way, NSGL, IL, 60088	0020	North side of bridge, standing on 10th Street, east middle 1/4 of north elevation, structural damage.
Pedestrian Bridge 113H	Great Lakes	Lake	IL	John Haggerty	9-Apr-24	310 Seabee Way, NSGL, IL, 60088	0021	North side of bridge, standing on 10th Street, east middle 1/4 of north elevation, structural damage.
Pedestrian Bridge 113H	Great Lakes	Lake	IL	John Haggerty	9-Apr-24	310 Seabee Way, NSGL, IL, 60088	0022	North side of bridge, standing on 10th Street, middle of north elevation, structural damage, looking up
Pedestrian Bridge 113H	Great Lakes	Lake	IL	John Haggerty	9-Apr-24	310 Seabee Way, NSGL, IL, 60088	0023	North side of bridge, standing on 10th Street, west middle 1/4 of north elevation, structural damage.
Pedestrian Bridge 113H	Great Lakes	Lake	IL	John Haggerty	9-Apr-24	310 Seabee Way, NSGL, IL, 60088	0024	North side of bridge, standing on 10th Street, west middle 1/4 of north elevation, structural damage.
Pedestrian Bridge 113H	Great Lakes	Lake	IL	John Haggerty	9-Apr-24	310 Seabee Way, NSGL, IL, 60088	0025	North side of bridge, standing on 10th Street, west 1/4 of north elevation, structural damage.
Pedestrian Bridge 113H	Great Lakes	Lake	IL	John Haggerty	9-Apr-24	310 Seabee Way, NSGL, IL, 60088	0026	South side of bridge, standing on 10th Street, west abutment, structural damage, looking northwest.
Pedestrian Bridge 113H	Great Lakes	Lake	IL	John Haggerty	9-Apr-24	310 Seabee Way, NSGL, IL, 60088	0027	South side of bridge, standing on 10th Street, west 1/3 of south elevation, structural damage.
Pedestrian Bridge 113H	Great Lakes	Lake	IL	John Haggerty	9-Apr-24	310 Seabee Way, NSGL, IL, 60088	0028	South side of bridge, standing on 10th Street, west middle 1/4 of south elevation, structural damage.
Pedestrian Bridge 113H	Great Lakes	Lake	IL	John Haggerty	9-Apr-24	310 Seabee Way, NSGL, IL, 60088	0029	South side of bridge, standing on 10th Street, middle of south elevation, structural damage, look up.
Pedestrian Bridge 113H	Great Lakes	Lake	IL	John Haggerty	9-Apr-24	310 Seabee Way, NSGL, IL, 60088	0030	South side of bridge, standing on 10th Street, east middle 1/4 of south elevation, structural damage.
Pedestrian Bridge 113H	Great Lakes	Lake	IL	John Haggerty	9-Apr-24	310 Seabee Way, NSGL, IL, 60088	0031	South side of bridge, standing on 10th Street, east 1/3 of south elevation, structural damage.
Pedestrian Bridge 113H	Great Lakes	Lake	IL	John Haggerty	9-Apr-24	310 Seabee Way, NSGL, IL, 60088	0032	South side of bridge, standing on 10th Street, east foundation abutment, looking northeast.
Pedestrian Bridge 113H	Great Lakes	Lake	IL	John Haggerty	9-Apr-24	310 Seabee Way, NSGL, IL, 60088	0033	South side of bridge, standing on 10th Street, 25 feet south of bridge, east 1/3 of elevation, look northeast
Pedestrian Bridge 113H	Great Lakes	Lake	IL	John Haggerty	9-Apr-24	310 Seabee Way, NSGL, IL, 60088	0034	South side of bridge, standing on 10th Street, 25 feet south of bridge, mid elevation, looking north.
Pedestrian Bridge 113H	Great Lakes	Lake	IL	John Haggerty	9-Apr-24	310 Seabee Way, NSGL, IL, 60088	0035	South side of bridge, standing on 10th Street, west middle 1/4 of south elevation, looking north.
Pedestrian Bridge 113H	Great Lakes	Lake	IL	John Haggerty	9-Apr-24	310 Seabee Way, NSGL, IL, 60088	0036	South side of bridge, standing on 10th Street, 25 feet south of bridge, west abutment, looking northwest.
Pedestrian Bridge 113H	Great Lakes	Lake	IL	John Haggerty	9-Apr-24	310 Seabee Way, NSGL, IL, 60088	0037	South side of bridge, standing on 10th Street, 50 feet south of bridge, looking north, overall view.
Pedestrian Bridge 113H	Great Lakes	Lake	IL	John Haggerty	9-Apr-24	310 Seabee Way, NSGL, IL, 60088	0038	North side of bridge, standing on 9th street, 30 feet north of bridge, east 1/2 of bridge, looking southeast.
Pedestrian Bridge 113H	Great Lakes	Lake	IL	John Haggerty	9-Apr-24	310 Seabee Way, NSGL, IL, 60088	0039	North side of bridge, standing on 9th street, 30 feet north of bridge, overall view, looking southeast.
Pedestrian Bridge 113H	Great Lakes	Lake	IL	John Haggerty	9-Apr-24	310 Seabee Way, NSGL, IL, 60088	0040	North side of bridge, standing on 9th street, 30 feet north of bridge, damage to west abutment, look south
END								

NSGL - S113H Demolition - Mitigation Measures - Measured Drawings



08'28'42 - Map shows S113H existence of bridge at this time.

NSGL - S113H Demolition - Mitigation Measures - Measured Drawings



08'28'42 - Map shows S113H existence of bridge at this time (enlarged street view).

ORDER OF ACCOMPLISHING WORK
NOTED BY NUMBERS THUS: 1

E	4-7-44	Contr. and V&D Nos. added and general revisions for "As Built" construction.	H.E.Co
D	2-10-42	STREET NAMES CORRECTED	D.D.A.P
C	11-17-42	TURN-IN ON "A" STREET EAST OF BLDG #14-B OMITTED.	W.F.G
"B"	11-18-42	ADDED PASSAGE WAY BETH. BLDG #14-A & #14-B; MH. SETTL. BASIN AT BLDG. #14-A OMITTED.	W.F.G
"A"	9-29-42	CHANGED STORM DRAIN ALONG "A" STREET, ADDED NEW S.W. EAST-SIDE OF SEVENTH ST. ADDED DRAINS FROM WEST- & EAST SIDES OUR "B" BLDG.	W.F.G
REVISION	DATE	BY	

B R I E F

DRAWN BY: W.F.G.
 TRACED BY: W.F.G.
 CHECKED BY: F.H.
 CH'F. DR'FMN: J.B.
 IN CHARGE: E.A.C.

SHEET 1 OF 1
 ACCOMPANYING
 CONTRACT NO.
 110y 5283

P.W. DRAWING NO.
505-174

U.S. NAVAL HOSPITAL GREAT LAKES, ILL.

IMPROVEMENT OF ROADS & WALKS

APPROVED: Aug. 28, 1942

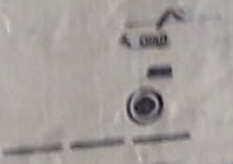
[Signature]
 PUBLIC WORKS OFFICER

Y.& D. DRAWING NO.
206,746

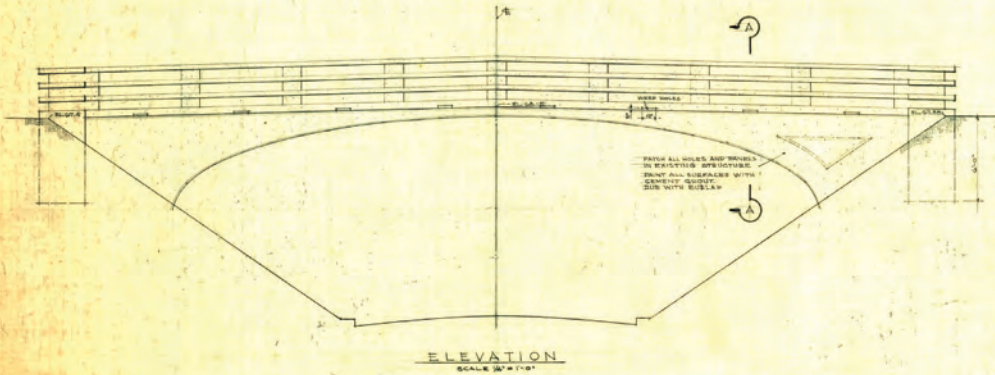
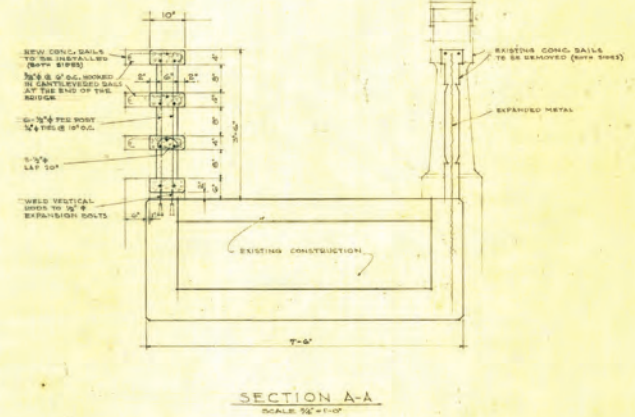
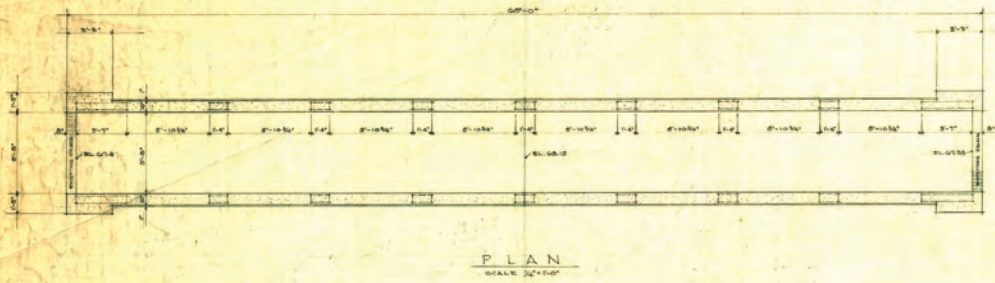
RECORD DRAWING

SHEET 1 OF 1
 DATED JUNE 28, 1945

SCALE 1" = 50' 0"



08'28'42 - Map shows S113H existence of bridge at this time (enlarged titleblock).



06'04'45 - drawings shows original enclosed concrete handrail design & 1945 handrail replacement design.

Revision	Date	By	
Drawn by	A.H.		
Traced by	A.H.		
Structural	R.V.		
Checked by	C.M.		
Chief Clerk	J.P.		
Design Mgr.	J.P.		
Proj. Mgr.	J.P.		
Sheet	1 of 1		
Approved	JUNE 6 1945	Y. & D. Drawing No.	
P. M. Drawing No.	7-1-17		

U.S. NAVAL TRAINING CENTER
GREAT LAKES, ILLINOIS
U.S. NAVAL HOSPITAL
FOOT BRIDGE # 7
NEW CONC. RAILINGS

Enclosure (2)

ADDRESS: Facility 113H, 10th St.
Historic District Contributing, Hospital Side,
Naval Station Great Lakes

NAME

Common: Facility 113H
Historical: Facility 113H

FUNCTION

Original: Pedestrian Bridge
Current: Pedestrian Bridge

CONDITION

Excellent _____
Good _____
Deteriorated X

UTM Quad: Waukegan, Illinois

Zone	Easting	Northing
16	431139	4684047



DESCRIPTION (Style or type, shape or plan, no. of stories, roof shape, decorative work, etc.)

See continuation sheet.

Subsidiary Buildings

None visible

MAJOR PHYSICAL CHANGES FROM ORIGINAL CONSTRUCTION

The original enclosed concrete balustrade walls, and the 1945 handrails have been replaced. Additionally, the entire concrete arch structure has been resurfaced with a white coating.

HISTORY

Construction date: Pre-1926 Builder/Architect: Unknown
Associated events, people, and dates

The establishment of a Naval training center near Chicago was authorized by President Roosevelt in 1904. The station was dedicated and opened in 1911 as the Great Lakes Naval Training Station. The original complex included 39 permanent buildings and could accommodate 1,500 men. The station's buildings were designed by Jarvis Hunt, an eminent New York architect best known as the nephew of renowned late Victorian architect Richard Morris Hunt.

The station was located on a series of bluffs divided by a ravine carved into the site by Pettibone Creek. At the point where the creek emptied into Lake Michigan, a harbor was established for the station. North of the ravine sat officers' houses (continued)

NATIONAL REGISTER EVALUATION

- A. Individually: Yes _____ No X
B. As part of a potential historic district: Yes X No _____
C. Explain Rationale – specify criteria A, B, C, D, or any combination of any:

For nearly a century, Naval Station Great Lakes has served as the Navy's largest training facility. The original buildings and other related historic properties are the heart of Great Lakes, and for a coherent historic district that is National Register eligible under Criterion C. These buildings were designed by a well-known American architect, retain a high level or integrity, and exemplify the formally organized community planning that was prevalent at the turn of the century.

Sources/Comments

Master Building List, Real Estate Division, Naval Station Great Lakes. Historic Maps of Base, National Archives Cartographic Division. Archival Drawings, Naval Station Great Lakes, Public Works Office. Navy Facilities Engineering Systems Command, *Detailed Inventory of Naval Shore Facilities*, 2023.

Original Surveyor (October 6, 2006)

Roy Hampton & Heather Kenney, Hardlines Design Company
4608 Indianola Ave., Columbus, OH 43214

Supplemental Research (February 2023)

John Haggerty, Naval Facilities Engineering Systems
Command, 310 Seabee Way, Great Lakes, IL 60088

Description Continued

Facility 113H is a bridge designed to carry pedestrian traffic over 10th St. It is a small, closed spandrel concrete segmental arch bridge. The bridge has concrete walls, plain recessed panels in the spandrels, and aluminum pipe hand railings. The bridge is approximately 6 feet wide and 27 feet long. A set of concrete steps is located north of the bridge leading to 10th St.

History Continued

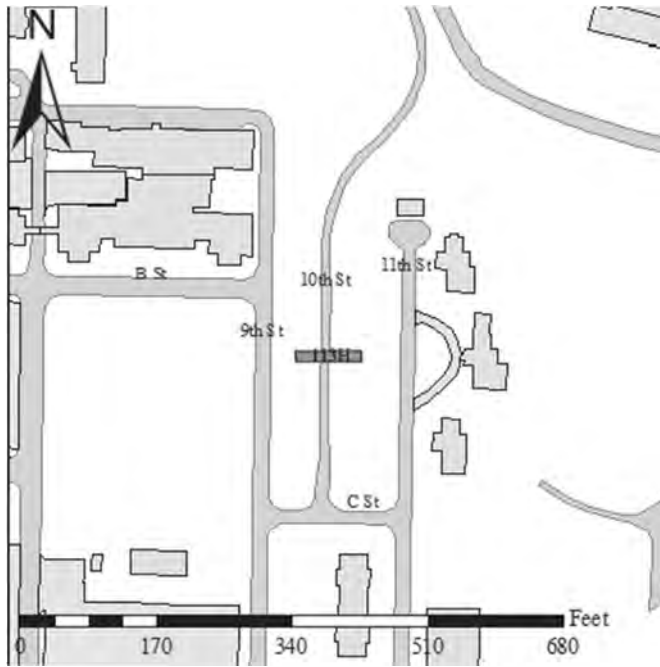
and the station's main parade ground. Buildings on the north, east and west surrounded this parade ground, while the south was left open to the Pettibone Creek ravine. Dormitories, mess halls, drill halls, classrooms and the administration building were grouped around the parade ground. Receiving facilities for new recruits were positioned southeast of the main parade ground. The U. S. Naval Hospital was located south of the main parade ground and the Pettibone Creek ravine.

The layout of the station was the result of collaboration between Jarvis Hunt's office and U. S. Navy engineer George McKay. While the station as constructed accommodated 1,500 men, the original master plan for the station anticipated additional construction that would expand it to accommodate 3,000 men.

Great Lakes expanded to train a large number of U. S. Navy personnel during World War I. The facility was downscaled in the 1920s and 1930s but expanded rapidly again during World War II. Barracks, drill halls, and other structures were built to keep the station's training capacity high. Many of these structures were of World War II temporary wood frame mobilization construction. With the acceleration of the Cold War, an expansion of all branches of the armed forces occurred. A high demand for new recruits assured that the population of Great Lakes would continue to grow. Therefore, a building campaign was begun to replace the ramshackle World War II structures, and to build on undeveloped portions of the station. Isolated areas of construction have occurred across the station in the 1980s and 1990s.

Facility 113H was constructed sometime between 1906 and 1926 as a pedestrian bridge across 10th St.

MAP



PHOTOGRAPH

