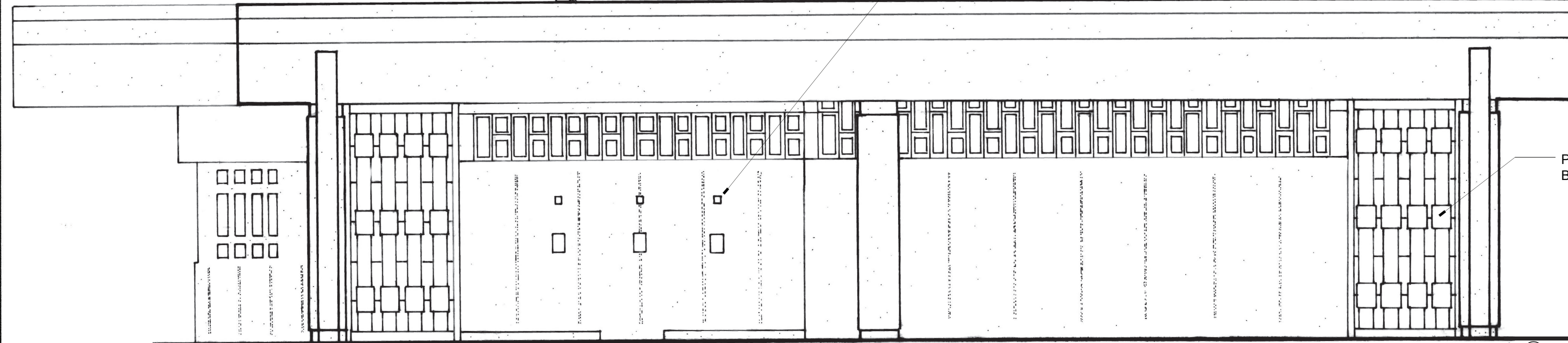
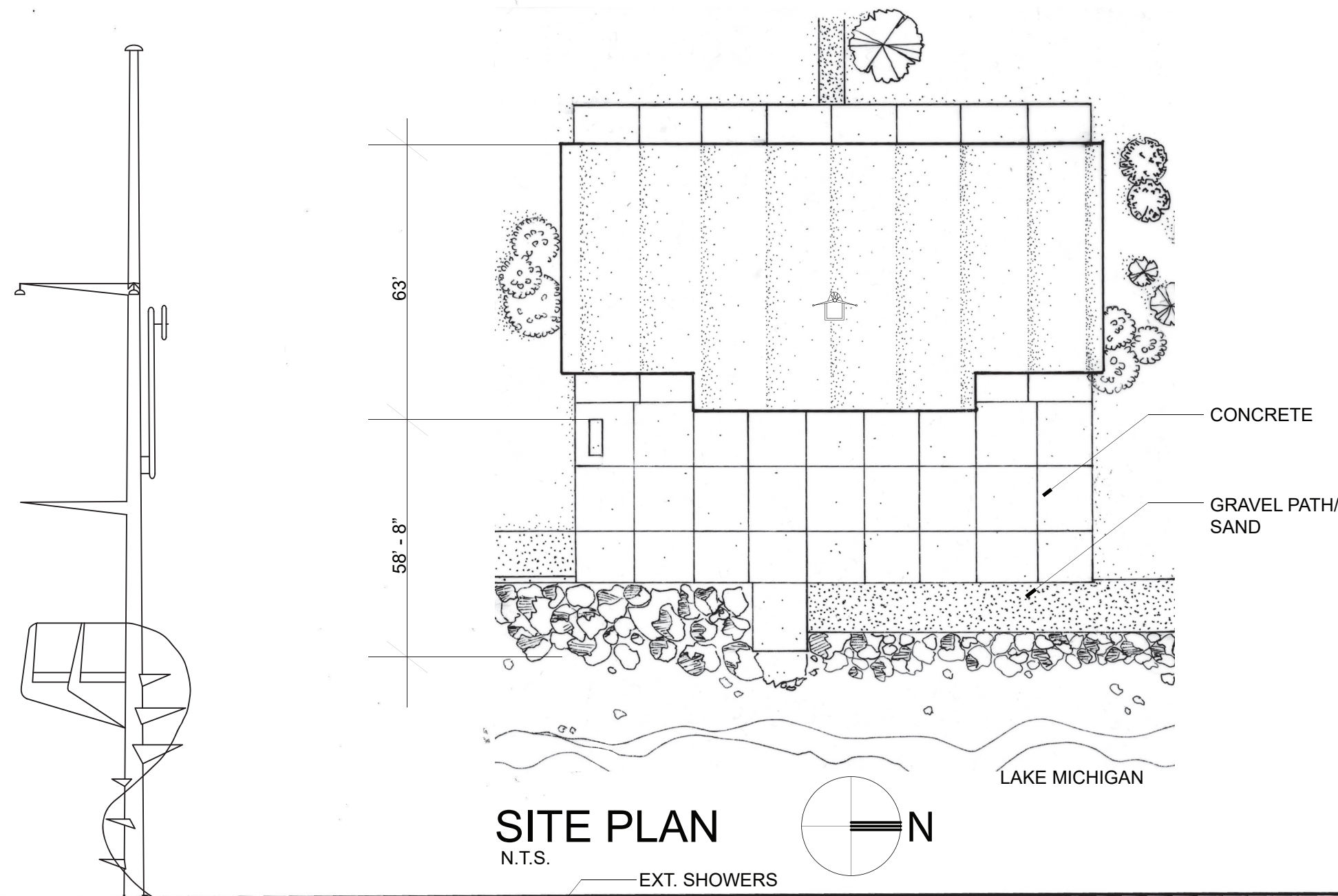


Illinois Beach South Bathhouse

ZION, ILLINOIS

This project was conducted during the fall semester of 2022 by Shelbye Doyen, Chanan Hanson, Laura Hershner, Victoria Hill, and Sol Sherer-Estevéz, all students of the Historic Preservation Master of Science degree at the School of the Art Institute of Chicago, under the direction of Prof. Charles Pipal, AIA. The team gives its thanks to Anthony Rubano, Deputy State Historic Preservation Officer at the Illinois Department of Natural Resources for sharing his research and his continued advocacy of Recent Past resources.



The Illinois Beach South Bathhouse structure was erected in 1961, along with several other buildings in the Illinois Beach State Park. The architects were Barancik, Conte & Associates of Chicago, Illinois. Its cast-in-place concrete construction is typical of Modernist structures of this period. The structure faces east on the site, towards the beach and Lake Michigan. There are public entrances on both the east and west elevations.

The original use of the structure was as a public beach house, with locker rooms, toilets, exterior showers and a concession stand. Due to a lack of utilization and maintenance, the building has been decommissioned and boarded up. The structure has been vacant since 1987.

The building is a single story structure of cast in place reinforced concrete pillars and concrete block with a central tower. It utilizes four cast concrete barrel vaults that comprise the roof.

The building is currently unmaintained and shows signs of deterioration due to water infiltration and weathering. Despite this, the building maintains a high degree of historic integrity, especially on its exterior facades. The privacy screen/honeycomb pattern of concrete masonry units indicates a shift between indoor and outdoor public spaces. The interior plan consists of two equal locker rooms and toilet facilities separated by a concession's stand. The materials include a smooth-faced, cast in place concrete floor slab, concrete masonry unit walls, and a concrete barrel vaulted roof.

