

Mitigation

SHPO LOG #008051723

Photo documentation: 500 E. Northwest Hwy, Arlington Hts., IL 60004



500 E. Northwest Hwy. 1<sup>st</sup> Point Auto Repair



Customer Care Front Desk view 1 of 2

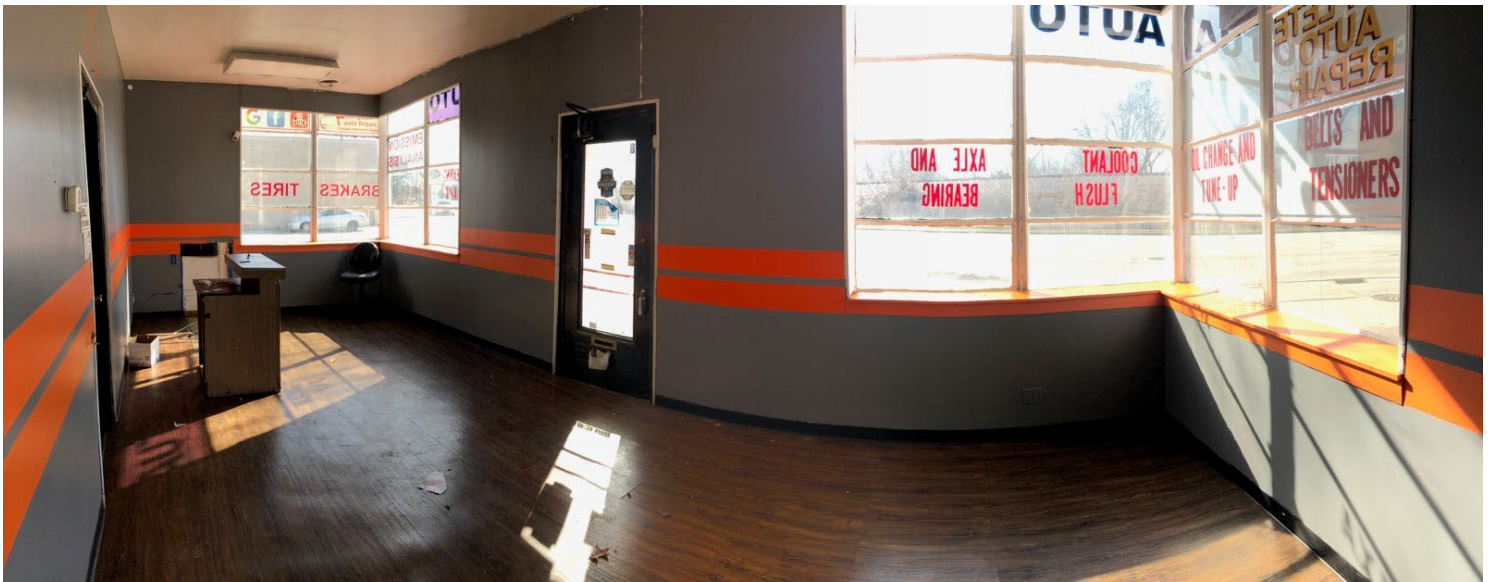
Mitigation

SHPO LOG #008051723

Photo documentation: 500 E. Northwest Hwy, Arlington Hts., IL 60004



Customer Care Front Desk view 2 of 2



Customer Waiting Area

Mitigation

SHPO LOG #008051723

Photo documentation: 500 E. Northwest Hwy, Arlington Hts., IL 60004



Repair Bay #1 West side of building View looking south



Repair Bay #1 West side of building View looking north

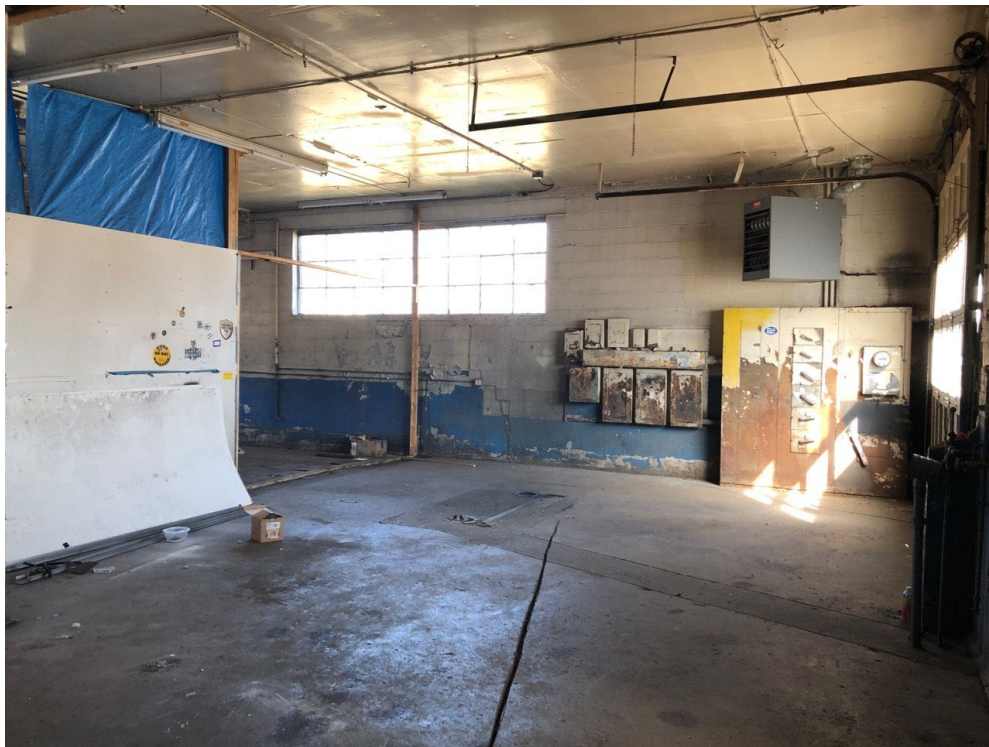
**Mitigation**

**SHPO LOG #008051723**

**Photo documentation: 500 E. Northwest Hwy, Arlington Hts., IL 60004**



Repair Bay Area #2- East side of building



Back of building with Repair Bay #2- East side of building

Mitigation

SHPO LOG #008051723

Photo documentation: 500 E. Northwest Hwy, Arlington Hts., IL 60004



Back Bay Area #2 and supply closet

04/03/2025

[DOCUMENT TITLE] | [Document subtitle]