

**MEMORANDUM OF AGREEMENT AMONG
METRA AND THE ILLINOIS STATE HISTORIC PRESERVATION OFFICER
REGARDING THE 16TH STREET INTERLOCKING TOWER DEMOLITION
PROJECT IN CHICAGO, ILLINOIS
(SHPO LOG #009090924)**

WHEREAS, the Commuter Rail Division of the Regional Transportation Authority, d/b/a Metra (Metra), plans to undertake the decommissioning and demolition of the 16th Street Interlocking Tower, located on its Rock Island Line (RI) at 16th and Clark Streets in Chicago, Cook County, Illinois, to implement key system efficiencies including the transfer of current manual interlocking operations to centralized traffic control managed at Metra's Consolidated Control Facility; and

WHEREAS, the project is an Undertaking subject to review under the Illinois State Agency Historic Resources Preservation Act (20 ILCS 3420) and its implementing rules (17 IAC 4180) (Act); and

WHEREAS, Metra has consulted with the Illinois State Historic Preservation Office (Office), a Division of the Illinois Department of Natural Resources (IDNR), pursuant to the Act; and

WHEREAS, the Office currently resides within IDNR, and the Director of IDNR is the duly designated State Historic Preservation Officer (SHPO); and

WHEREAS, on September 27, 2024, the SHPO determined that the 16th Street Interlocking Tower is eligible for listing in the National Register of Historic Places (NRHP) and is significant under Criterion A for railroad operations and under Criterion C for its internal machinery at the local level for the City of Chicago; and

WHEREAS, the SHPO has determined that the Undertaking will have an adverse effect on the 16th Street Interlocking Tower due to its demolition; and

NOW, THEREFORE, Metra and the SHPO agree that the Undertaking shall be implemented in accordance with the following stipulations in this Memorandum of Agreement (Agreement) in order to mitigate the adverse effects of this Undertaking on the 16th Street Interlocking Tower (Tower).

STIPULATIONS

- I. MITIGATION: Photographic Recordation of Tower Interlocking Machinery
 - A. Metra shall use agency staff member(s) or retain a historical contractor(s) of its choice who meet the Secretary of the Interior's Qualifications (36 CFR Part 61, Appendix A, https://www.nps.gov/history/local-law/arch_stnds_9.htm) to perform photographic recordation of the tower's interior and equipment according to the measures described below:
 1. Recordation will be conducted using digital or 35mm photography.
 2. All photographs will be black and white, 5"x7", and printed on archival photopaper once approved by the Office.
 3. Upon completion of photography, Metra shall digitally submit the images to the Office for review and comment.

4. Upon confirmation from the Office in writing that the photographic recordation is accepted and complete, Metra will proceed with the printing of archival black and white photos.
5. Upon completion, the Metra shall submit the following to the Office:
 - a. One archival clamshell of sufficient size to encapsulate the recordation.
 - b. One digital record (download, link, flash drive, CD, or DVD) with the complete recordation for posting on the SHPO website.

II. MITIGATION: Salvage, Marketing, and Disposition of Tower Interlocking Machinery

- A. Prior to demolition of the Tower and as depicted in Attachment 1, Metra will salvage, to the extent feasible, the internal machinery that dates from the Tower's period of significance including:
 1. Taylor Model 2 Interlocking Machine and Cabinetry,
 2. Illuminated Track Diagram Board,
 3. Power Distribution Switchboard,
 4. Wall-Mounted Domed Signal Releases, and
 5. Select Tractive Type Relays.
- B. At Metra's expense, Metra will remove the described machinery and securely store the equipment at a Metra storage facility to be determined. Salvaged machinery shall be placed into initial storage for a period not to exceed twelve (12) months.
- C. As listed in Attachment 2, Metra has identified potential railroad and heritage-oriented museum entities in which to market the salvaged machinery and mechanical components. During a period not to exceed four (4) months, Metra will conduct outreach to these entities via electronic mail or via United States Postal Service and will market the salvaged machinery to other parties that may be later identified during that period.
- D. At Metra's request, interested entities will provide information documenting proposed disposition plan and location of the machinery, an entity's financial capacity to relocate the salvaged machinery from Metra storage to final disposition location, long-term fiscal viability of the prospective entity, and ability to meet the timelines set forth in this Agreement.
- E. Following the four (4) month equipment marketing period, Metra will review and select a preferred entity. Metra will then commence coordination with the selected entity and develop an agreed upon work plan to retrieve and transport the machinery by the entity.
- F. Within a period not to exceed six (6) months, the selected entity will complete the retrieval and transport of the salvaged machinery. Documentation memorializing the transfer of the salvaged equipment will be provided to SHPO.
- G. If the equipment is not transferred to a qualifying entity within the twelve (12) month storage period, at Metra's discretion, the salvaged equipment may continue to be maintained in storage or be properly disposed. Documentation memorializing Metra's decision will be provided to SHPO.

III. DURATION

This Agreement shall be effective until such time as all its terms are satisfied or it is amended or terminated and replaced. Prior to such time, Metra may consult with SHPO to reconsider the terms of the Agreement and amend it in accordance with Stipulation VII AMENDMENTS below. Metra shall notify SHPO as to the course of action it will pursue.

IV. POST-REVIEW DISCOVERIES

If potential historic properties are discovered or unanticipated effects on historic properties found, Metra shall consult with the SHPO immediately and make reasonable efforts to avoid, minimize, or mitigate adverse effects to such properties. In the event of an unanticipated discovery of human remains or burials, Metra understands and agrees that it must immediately stop work within the area of discovery, consult with the SHPO, and comply with the Human Remains Protection Act (20 ILCS 3440) and its implementing rules (17 IAC 4170) as administered by IDNR, which provides that no human remains shall be disturbed without a permit issued by IDNR.

V. MONITORING AND REPORTING

Each year following the execution of this Agreement until it expires or is terminated, Metra shall provide to SHPO a summary report detailing work undertaken pursuant to its terms. Such report shall include any scheduling changes proposed, any problems encountered, and any disputes and objections received in Metra's efforts to carry out the terms of this Agreement.

VI. DISPUTE RESOLUTION

Should any signatory to this Agreement object at any time to any actions proposed or the manner in which the terms of this Agreement are implemented, Metra shall consult with the signatories to resolve the objection. If the signatories cannot agree regarding a dispute, the signatories shall utilize the procedures provided in 20 ILCS 3420/4e.

- A. Metra's responsibility to carry out all other actions subject to the terms of this Agreement that are not the subject of the dispute remain unchanged.

VII. AMENDMENTS

This Agreement may be amended when such an amendment is agreed to in writing by all signatories. The amendment will be effective on the date a copy is signed by all the signatories.

VIII. TERMINATION

If any signatory to this Agreement determines that its terms become impossible to carry out, that party shall immediately consult with the other signatories to attempt to develop an amendment per Stipulations V and VI above. If within thirty (30) days an amendment cannot be reached, any signatory may terminate the Agreement upon written notification to the other signatories.

IX. COUNTERPARTS; FACSIMILE OR .PDF SIGNATURES

This Agreement may be executed in counterparts, each of which shall be considered an original and together shall be one and the same Agreement. A facsimile or .pdf copy of this Agreement and any signatures thereon will be considered for all purposes as an original.

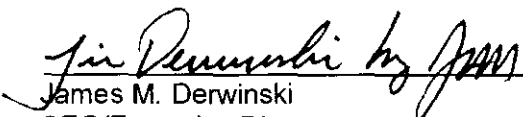
EXECUTION of this Agreement by Metra and the SHPO, and the implementation of its terms evidence that Metra has afforded the SHPO an opportunity to comment on the effects of the Undertaking in compliance with the Act.

[Signature Pages to follow]

**MEMORANDUM OF AGREEMENT AMONG
METRA AND THE ILLINOIS STATE HISTORIC PRESERVATION OFFICER
REGARDING THE 16TH STREET INTERLOCKING TOWER DEMOLITION
PROJECT IN CHICAGO, ILLINOIS
(SHPO LOG #009090924)**

SIGNATORY

METRA

By: 
James M. Derwinski
CEO/Executive Director
Commuter Rail Division of the Regional
Transportation Authority, d/b/a Metra

Date: 1/27/2025

MEMORANDUM OF AGREEMENT AMONG
METRA AND THE ILLINOIS STATE HISTORIC PRESERVATION OFFICER
REGARDING THE 16TH STREET INTERLOCKING TOWER DEMOLITION
PROJECT IN CHICAGO, ILLINOIS
(SHPO LOG #009090924)

SIGNATORY

ILLINOIS DEPUTY STATE HISTORIC PRESERVATION OFFICER (SHPO)

By: Carey L. Mayer
Carey L. Mayer, AIA
Deputy State Historic Preservation Officer
Illinois Department of Natural Resource

Date: 2/3/2025

APPROVED FOR LEGAL SUFFICIENCY
Date: 2-3-25
Legal Counsel: M. Brett Irving

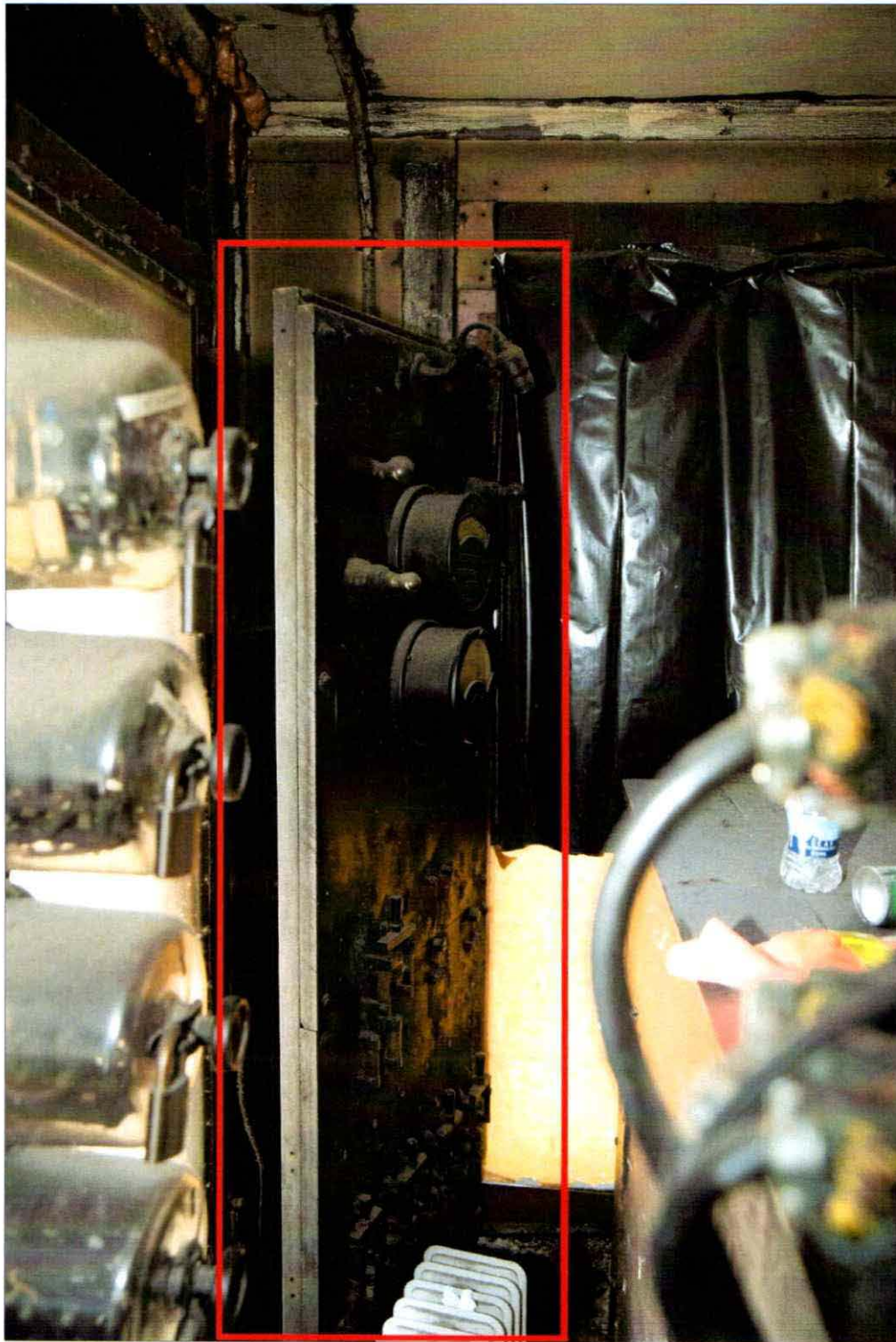
Attachment 1:
SALVAGE OF TOWER INTERLOCKING MACHINERY



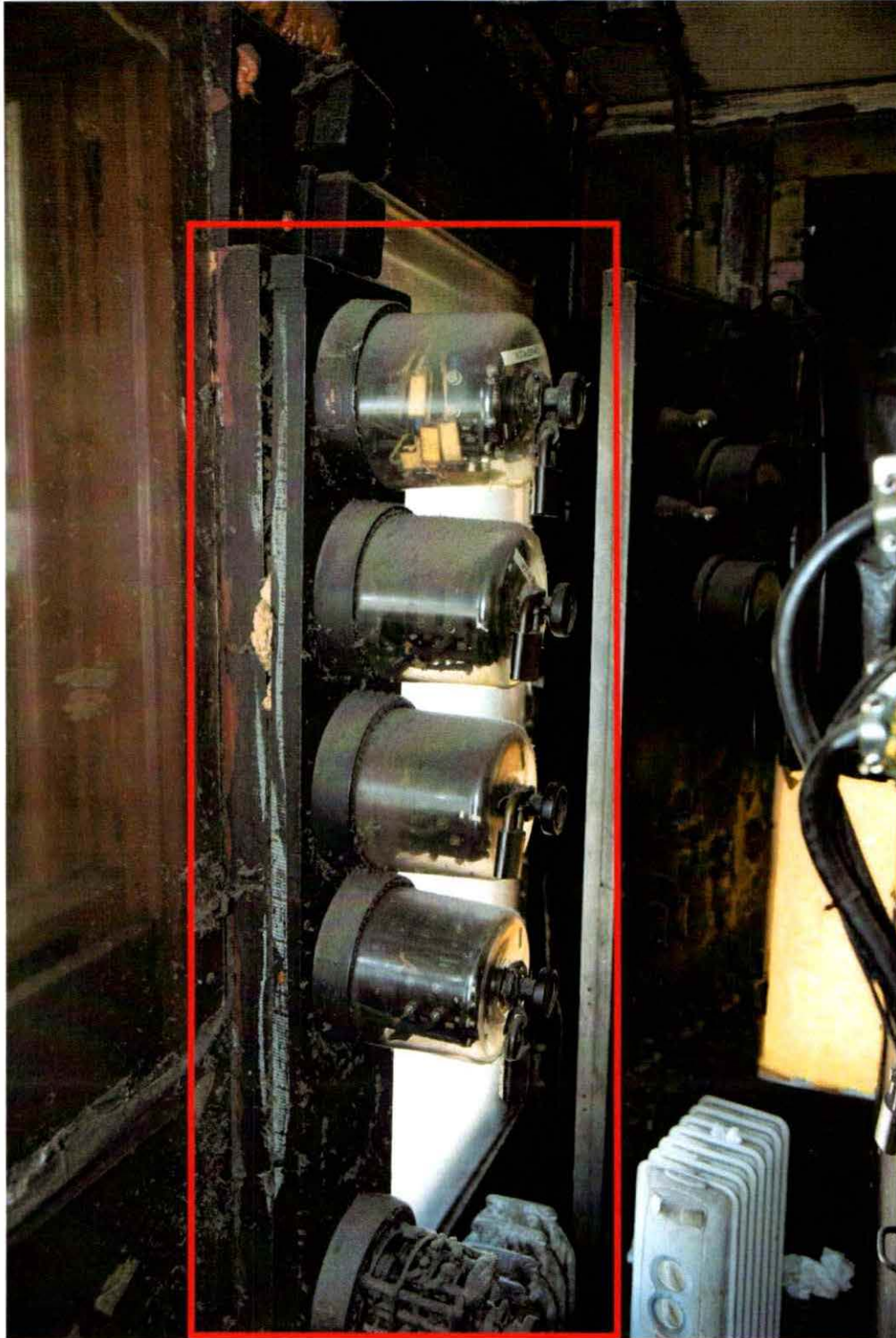
#1: Taylor Model 2 Interlocking Machine and Cabinetry



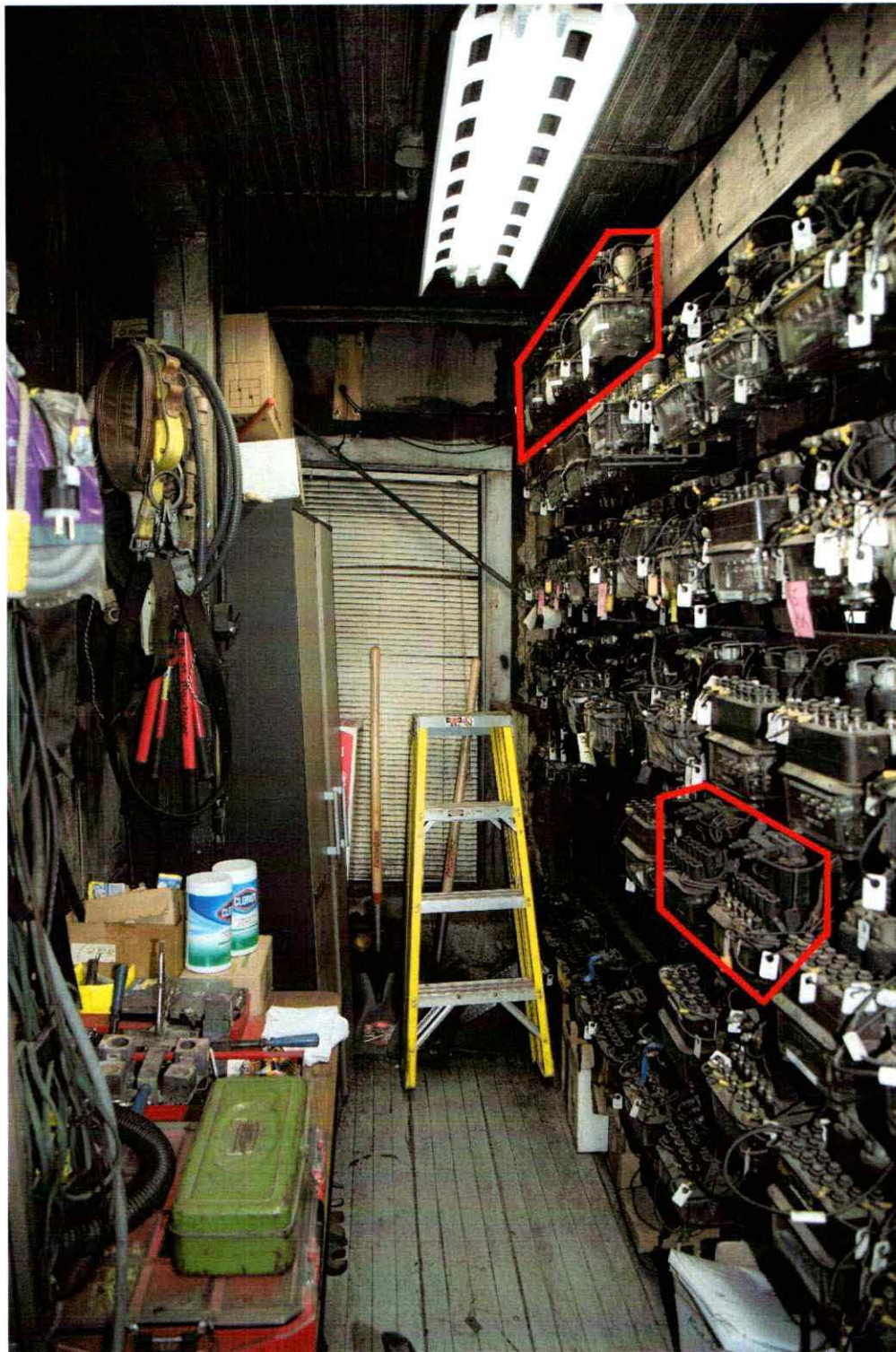
#2: Illuminated Track Diagram Board



#3: Power Distribution Switchboard



#4: Wall-Mounted Domed Signal Releases



#5: Select Tractive Type Relays

Attachment 2:

RAILROAD AND HERITAGE-ORIENTED MUSEUM ENTITIES

Railroad Entities and Museums: Illinois

Amboy Depot Museum

227 East Main Street
Amboy, IL 61310
(815) 857-4700
amboydepotmuseum@gmail.com
<http://www.amboydepotmuseum.org/>

Batavia Depot Museum

155 Houston Street
Batavia, IL 60510
(630) 406-5274
museum@bataviaparks.org
http://www.bataviahistoricalsociety.org/depot_museum.htm

Chatham Railroad Museum

100 N. State Street
Chatham, IL 62629
(217) 483-7792
www.chathamrailroadmuseum.org

Chicago Great Western Railroad Depot (Elizabeth History Museum)

111 East Myrtle Street
Elizabeth, IL 61028
(815) 858-2343
elizabethhistoricalsociety@gmail.com
<http://www.elizabethhistoricalsociety.com/>

Field Museum

1400 South DuSable Lake Shore Drive
Chicago, IL 60605
(312) 922-9410
<https://www.fieldmuseum.org>

Fox River Trolley Museum

365 South La Fox Street
South Elgin, IL 60177
(847) 697-4676
info@foxtrolley.org
<http://www.foxtrolley.org>

Galesburg Railroad Museum

211 South Seminary Street
Galesburg, IL 61401
(309) 342-9400
grrm211@gmail.com
<http://www.galesburgrailroadmuseum.org/>

Griffin Museum of Science and Industry

The Great Train Story
5700 South DuSable Lake Shore Drive
Chicago, IL 60637

<http://www.msichicago.org/whats-here/exhibits/the-great-train-story/>

Joliet Area Historical Museum

244 Ottawa Street
Joliet, IL 60432
(815) 723-5201

info@jolietmuseum.org

<https://www.jolietmuseum.org/joliet-railroad-museum.html>

Illinois Railway Museum

P.O. Box 427 (Mailing) / 7000 Olson Road (Museum)
Union, IL 60180
(815) 923-4391

<http://www.irm.org/>

Monticello Railway Museum

PO Box 401
992 Iron Horse Place
Monticello, IL 61856
(217) 762-9011
(877) 762-9011

info@mrym.org

<http://www.mrym.org/>

Rochelle Railroad Park

124 North 9th Street
Rochelle, IL 61068
(815) 562-7031
info@rochelleil.us

<http://www.rochellerailroadpark.org/>

Silver Creek & Stephenson Railroad

2954 South Walnut Road
Freeport, IL 61032
(815) 235-2198

thefreeportshow@thefreeportshow.com

<http://www.thefreeportshow.com/museum.htm>

**University of Illinois at Urbana-Champaign
Rail Transportation and Engineering Center**

1239B Newmark Engineering Laboratory, MC-250
205 N. Mathews Ave.
Urbana, IL 61801
(217) 300-1340

RailTEC-Central@illinois.edu

Railroad Entities and Museums: Midwest

French Lick Scenic Railway

8594 West State Road 56

French Lick, IN 47432

(800) 74-TRAIN

<https://frenchlickscenicrailway.org>

Hoosier Valley Railroad Museum

507 Mulberry Street

North Judson, Indiana 46366

574-896-3950

todd.flanigan@hoosiervalley.org / questions@hoosiervalley.org

<https://www.hoosiervalley.org/>

Mid-Continent Railway Museum

P.O. Box 358

North Freedom, WI 53951

(608) 522-4261

inquiries@midcontinent.org

<https://www.midcontinent.org/>

National Museum of Transportation

2933 Barrett Station Road

St. Louis, MO 63122

(314) 965-6212

museum@tnmot.org

<https://tnmot.org>

National Railroad Museum

2285 South Broadway

Green Bay, WI

(920) 437-7623

<https://nationalrrmuseum.org/>

National New York Central Railroad Museum

City of Elkhart

721 South Main Street

Elkhart, IN 46516

(574) 294-3001

<https://elkhartindiana.org/government/nnyccr-museum/>

New Buffalo Railroad Museum

530 South Whittaker Street

New Buffalo, MI 49117

(608) 522-4261

nbrm@hotmail.com

<https://new-buffalo-railroad-museum.org/>

Railroad Entities and Museums: Outside of the Midwest

B&O Railroad Museum

901 West Pratt Street

Baltimore, MD 21223

(410) 752-2490

<https://www.borail.org>