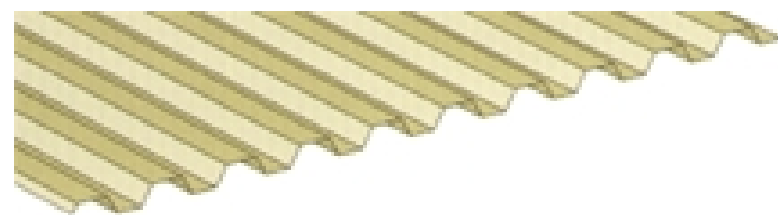




EXISTING



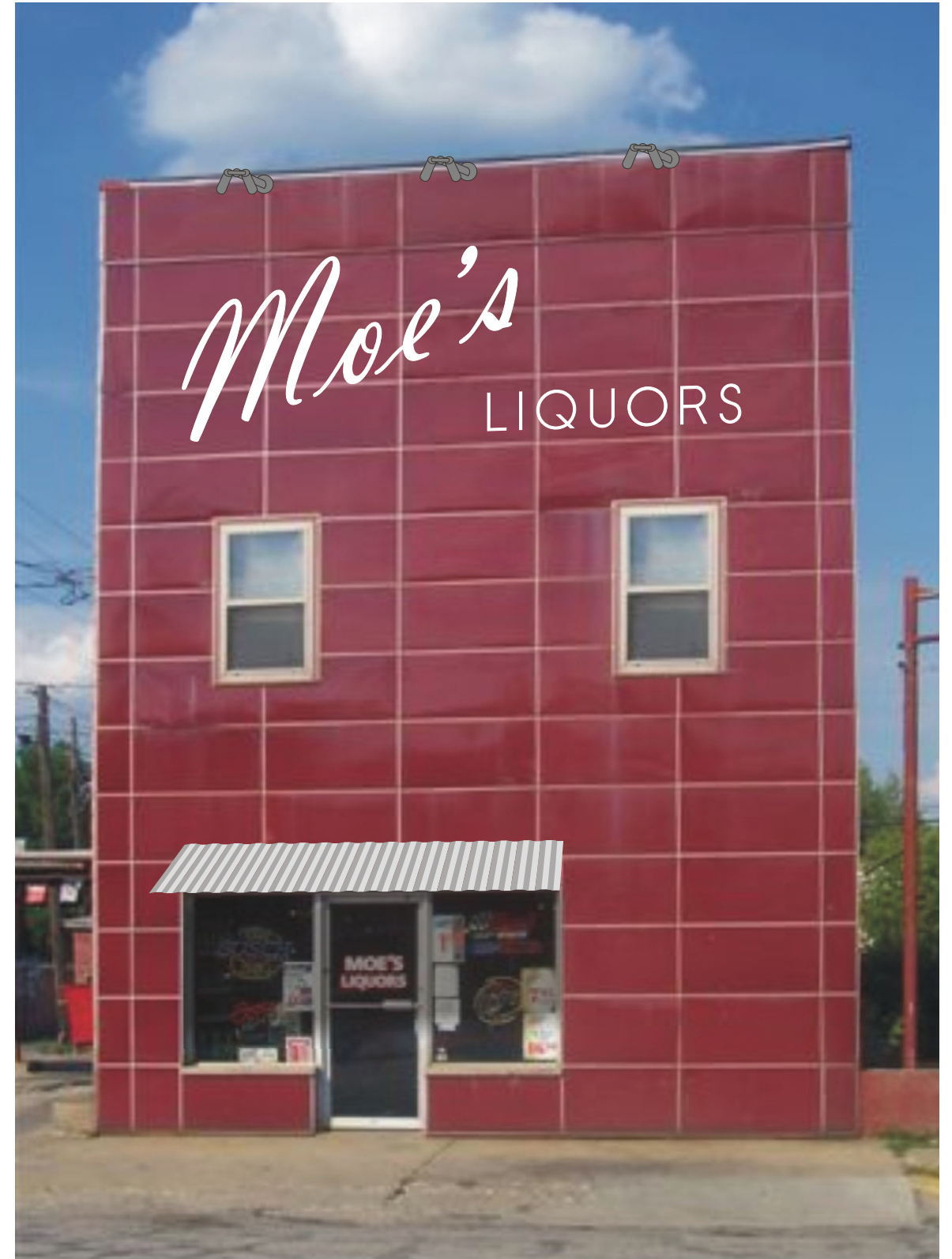
4" RIB CORRUGATED ROOFING

PROPOSED DESIGN

Corrugated metal canopy should have a minimal pitch. Vinyl graphics are applied directly to the porcelain enamel panels. Fonts used are *Vladimir Script* and RIBBON. Lighting fixtures are by B-K Lighting.



EXAMPLE OF A PORCELAIN ENAMEL FACADE



NOTE: The Illinois MAIN STREET Program, through the Illinois Historic Preservation Agency, has provided this free design assistance to qualified property/business owners in the officially designated MAIN STREET project areas. The rendering on this sheet is a conceptual view of the facade renovation based on information supplied to the staff architects. Should obscured architectural details or problems be revealed during the work, the local project manager and/or the staff architects should be consulted.



ILLINOIS MAIN STREET

ILLINOIS HISTORIC PRESERVATION AGENCY  
 One Old State Capitol Plaza Springfield, Illinois 62701 217.782.4836  
 OFFICE OF LIEUTENANT GOVERNOR PAT QUINN

MOE'S PACKAGE LIQUORS

117 S. Seventh St., Marshall

ELEVATION

Not to Scale

Drawn By DPB	Project Number 2005043	
Date 8/05	Sheet 1	Of 1