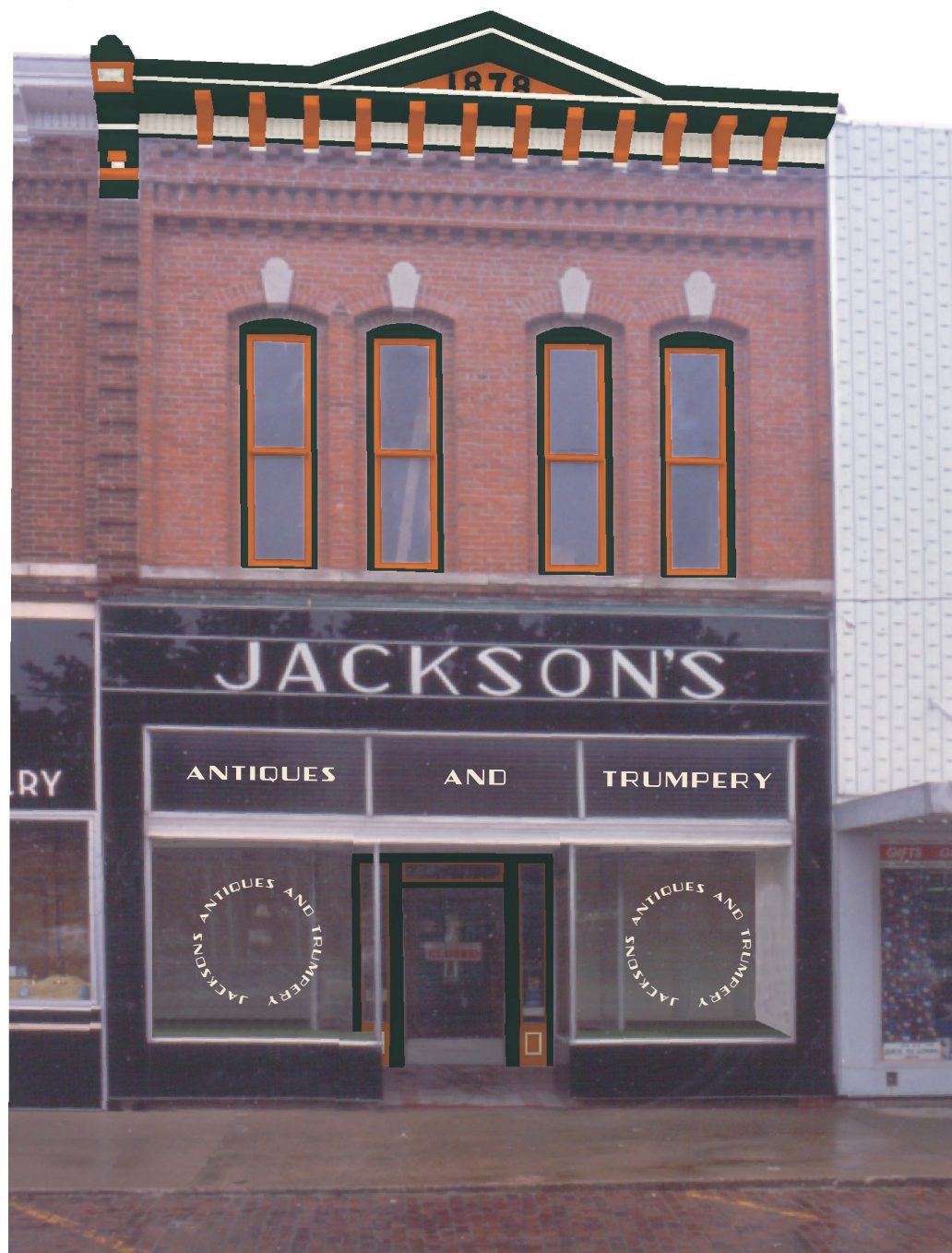




SCHEME 1: "RUSHVILLE ANTIQUES & TRUMPERY"



SCHEME 2: "JACKSON'S ANTIQUES & TRUMPERY"

PROPOSED DESIGNS

SCHEME 1 COLORS:

BASE:
 BENJ. MOORE:
 CLASSIC BURGUNDY (EXT. READY MIX) NOT FOR COLOR MATCH

TRIM:
 BENJ. MOORE:
 FAIRVIEW TAUPE (HC-85) NOT FOR COLOR MATCH

DETAILS:
 BENJ. MOORE:
 ELMIRA WHITE (HC-84) NOT FOR COLOR MATCH

SCHEME 2 COLORS:

BASE:
 BENJ. MOORE:
 ESSEX GREEN (EXT. READY MIX) NOT FOR COLOR MATCH

TRIM:
 BENJ. MOORE:
 MONROE BISQUE (HC-26) NOT FOR COLOR MATCH

DETAILS:
 BENJ. MOORE:
 GOLD RUSH (2166-10) NOT FOR COLOR MATCH

IN EACH SCHEME, THE WINDOW GRAPHICS ARE OFF-WHITE OR BEIGE.

NOTE: The ILLINOIS MAIN STREET Program, through the Illinois Historic Preservation Agency, has provided this free design assistance to qualified property/business owners in the officially designated Main Street project areas. The rendering on this sheet is a conceptual view of the facade renovation based on information supplied to the staff architects. Should obscured architectural details or problems be revealed during the work, the local project manager and/or the staff architects should be consulted.



ILLINOIS MAIN STREET

ILLINOIS HISTORIC PRESERVATION AGENCY
 500 East Madison Street Springfield, Illinois 62701 217.782.4836
 DEPARTMENT OF COMMERCE AND COMMUNITY AFFAIRS

RUSHVILLE ANTIQUES & TRUMPERY

108 West Lafayette, Rushville

ELEVATION

Not to Scale

Drawn By AMR	Project Number 2001056
Date 12/01	Sheet Of 1 1