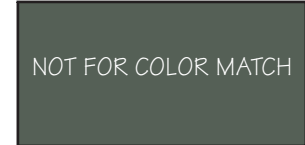
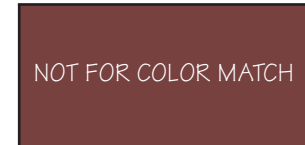


PAINT COLORS:



BASE:

GLIDDEN: SOUTHERN PINE
(90GY 08/187)



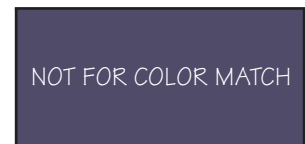
DETAILS:

GLIDDEN: COLONIAL RED
(10YR 09/250)



DETAILS:

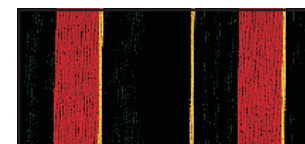
GLIDDEN: FOOL'S GOLD
(20YY 39/419)



DETAILS:

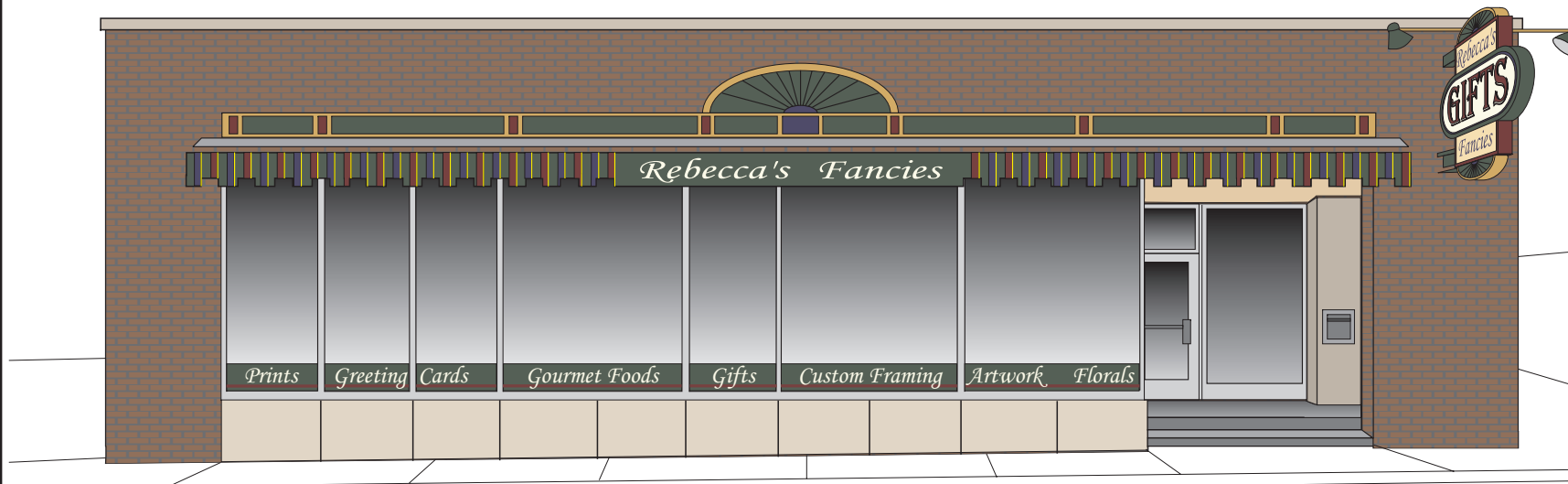
GLIDDEN: MIDNIGHT HAZE
(90BG 08/112)

AWNING:

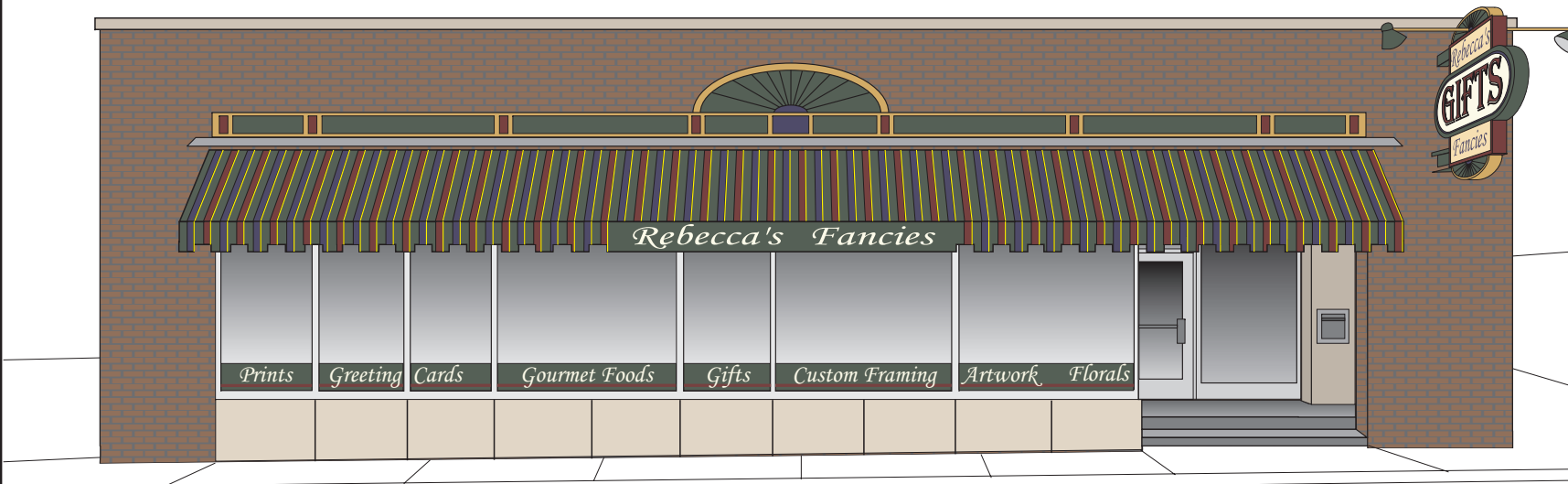


SUNBRELLA: CAPTAIN NAVY/
FOREST GREEN/YELLOW/
RED REGIMENTAL (4901)

NOTE: The Illinois MAIN STREET Program, through the Illinois Historic Preservation Agency, has provided this free design assistance to qualified property/ business owners in the officially designated MAIN STREET project areas. The rendering on this sheet is a conceptual view of the facade renovation based on information supplied to the staff architect. Should obscured architectural details or problems be revealed during the work, the local project manager and/or the staff architect should be consulted.



STOREFRONT
SIGN DESIGN



PARKING
SIGN DESIGN

PROPOSED DESIGN



ILLINOIS MAIN STREET

OFFICE OF LIEUTENANT GOVERNOR BOB KUSTRA
Architectural Services: Illinois Historic Preservation Agency
1 Old State Capitol Plaza/Springfield, Illinois 62701/217-782-9336

REBECCA'S FANCIES

122 EAST BROADWAY
ALTON, ILLINOIS

SOUTH ELEVATION

NOT TO SCALE

Drawn By:

BSL

Project No.:

9697

Date:

12 - 96

Sheet: Of:

1 1