

Basic Directions:

1. Lightly score dotted lines before cutting piece out to make folding easier.
2. Be careful to cut around all tabs.
3. Dotted lines are to be folded. Green dotted lines and green letters should be folded backward. Red dotted lines and red letters should be folded forward.
4. Letters indicate how pieces should fit together.

To Assemble Porches:

1. Cut out the Porch, Step, and Column pieces. Fold all dotted lines.
2. Glue together the Front Step pieces using tabs S1 - S6. Glue to Front Wall where indicated.
3. Glue together the Back Step pieces using tabs S1 - S6. Glue to Back Wall where indicated.
4. Glue together the Front Porch and its Sides. Attach to the Front Wall by inserting tabs 9a - 9d through slits cut in Front Wall. Glue tabs to back side of wall.
5. Glue together the Back Porch and its Sides. Attach to the Back Wall by inserting tabs 9a - 9d through slits cut in Back Wall. Glue tabs to back side of wall.
6. Glue up columns to create eight hollow tubes. Glue the Columns to the Steps and underside of Porch at the white circles.
7. Glue the bottom tabs onto a piece of poster board to provide a base. Make sure the corners are square and the walls are straight.

To Assemble Main Roof:

1. Cut out the Geison Roof pieces. Fold all dotted lines.
2. Glue together pieces to create End Geison Roofs.the Front and Back half of each end together; glue in Window Bays.
3. Glue Geison Roofs to create tubes of square cross section. Glue each Geison Roof to its matching image.
4. Cut out the six main Roof pieces. Cut slits where indicated and Fold all dotted lines.
5. Glue six Roof sections together and set aside.
6. Cut out the Octagonal Dome Support Tower. Fold all dotted lines.
7. Glue tower together with tabs T1 - T3. Glue to the Dome Support Tower Top with tabs T14 - T21.
8. Set Tower into center of walls. Test fit roof assembly around Tower and over Walls. When fit correctly, glue roof to End, Front, and Back wall tabs and to Tower tabs T4 - T13.

To Assemble Chimneys and Dome:

1. Cut out the eight Chimney pieces. Fold all dotted lines.
2. Glue each chimney together to create a box. Insert the two bottom tabs into the slits cut in the Roof.
3. Cut out the Dome Drum Wall pieces. Fold all dotted lines.
4. Glue the Dome Drum Walls together with tabs D1, D2. Glue the assembly to the red floor with tabs D3 - D10.
5. Cut out the Upper and Lower Cornice Circles. Cut out Upper and Lower Dome Cornice Sections. Fold all dotted lines and cut slits where indicated.
6. Glue the Cornice strips together. Glue the Lower Dome Cornice around the Circle matching up Blue numbers 1 - 15.
7. Glue the Upper Dome Cornice around the matching circle at letters a - q.
8. Insert the Lower Dome Cornice tabs with black numbers 1 - 15 through the upper circle, fold over, and glue.
9. Glue the Lower Dome Circle to the top of the drum walls with tabs Dd11 - Dd18.
10. Cut out and fold the two Dome pieces and the Dome Base.
11. Glue Dome pieces together at D1 and D2. Glue Dome pieces to Dome base with tabs D3 - D18. Glue the remaining Dome tabs, D19 - D34. Glue the Dome base to the center of the Upper Dome Cornice Circle.

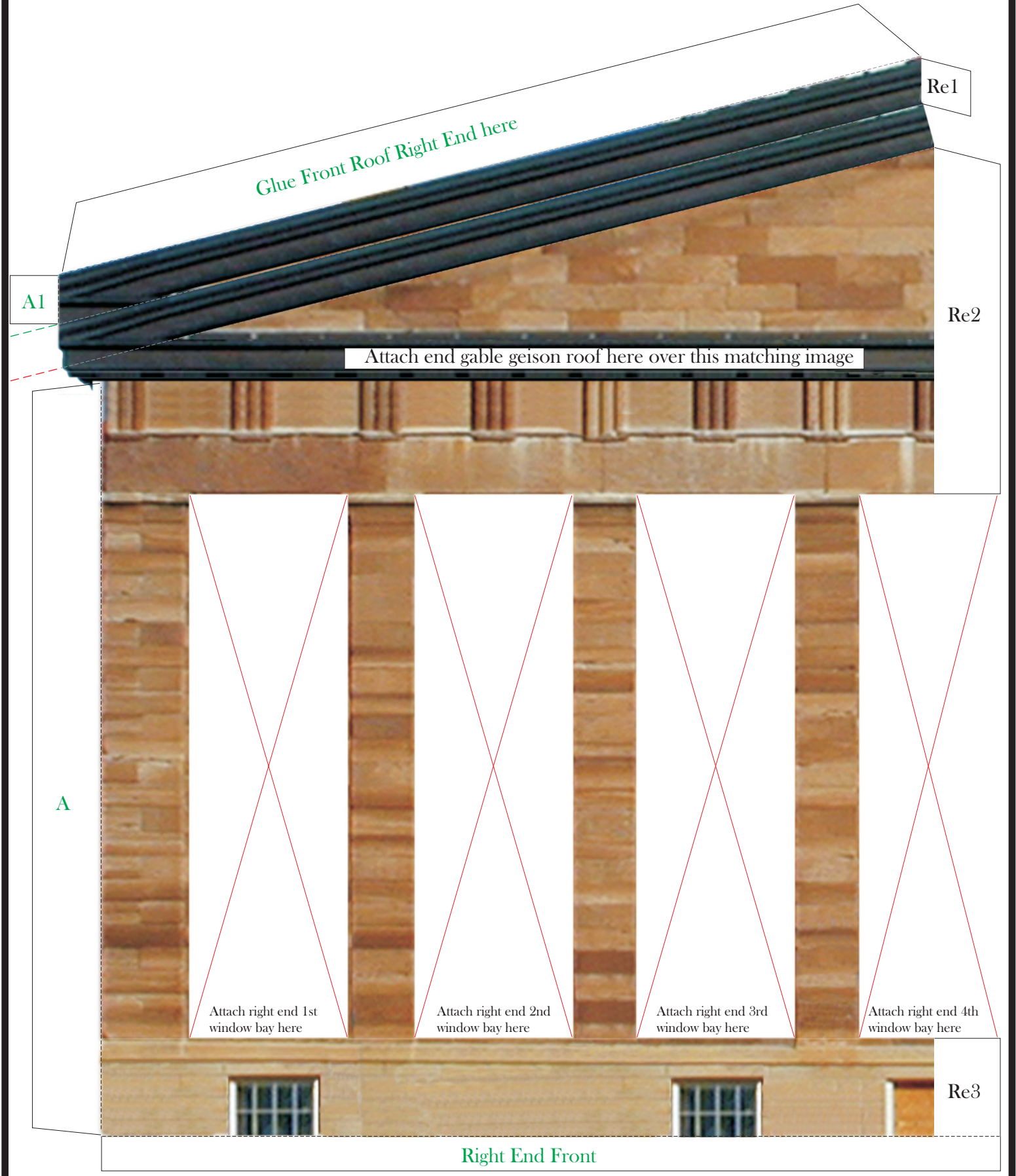
To Assemble Walls:

1. Cut out the End Wall and End Window Bay pieces. Fold all dotted lines.
2. Glue the Front and Back of each end together; glue in Window Bays.
3. Cut out Front and Back Wall pieces and Window Bays. Fold all dotted lines.
4. Glue the three Front Wall pieces together; glue the three Back Wall pieces together. Glue in the Window Bays where indicated..
5. Glue the Ends, Front, and Back together with tabs A - D. Glue the cornices with tabs A1 - D1.



View of built model

BUILD YOUR OWN LINCOLN SITES



Glue Front Roof Right End here

Attach end gable geison roof here over this matching image

Attach right end 1st window bay here

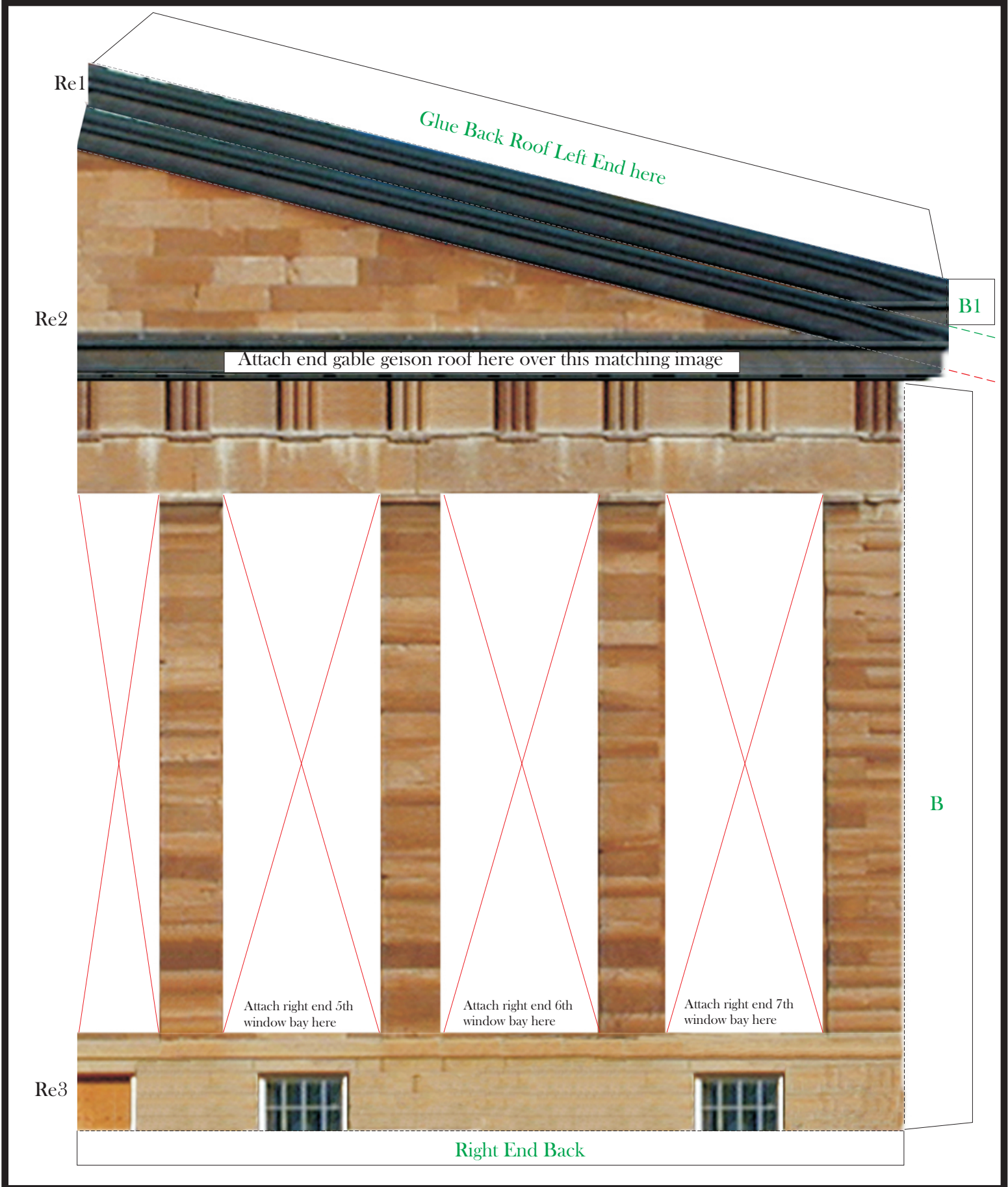
Attach right end 2nd window bay here

Attach right end 3rd window bay here

Attach right end 4th window bay here

Right End Front

BUILD YOUR OWN LINCOLN SITES



Re1

Glue Back Roof Left End here

Re2

Attach end gable geison roof here over this matching image

B1

B

Attach right end 5th window bay here

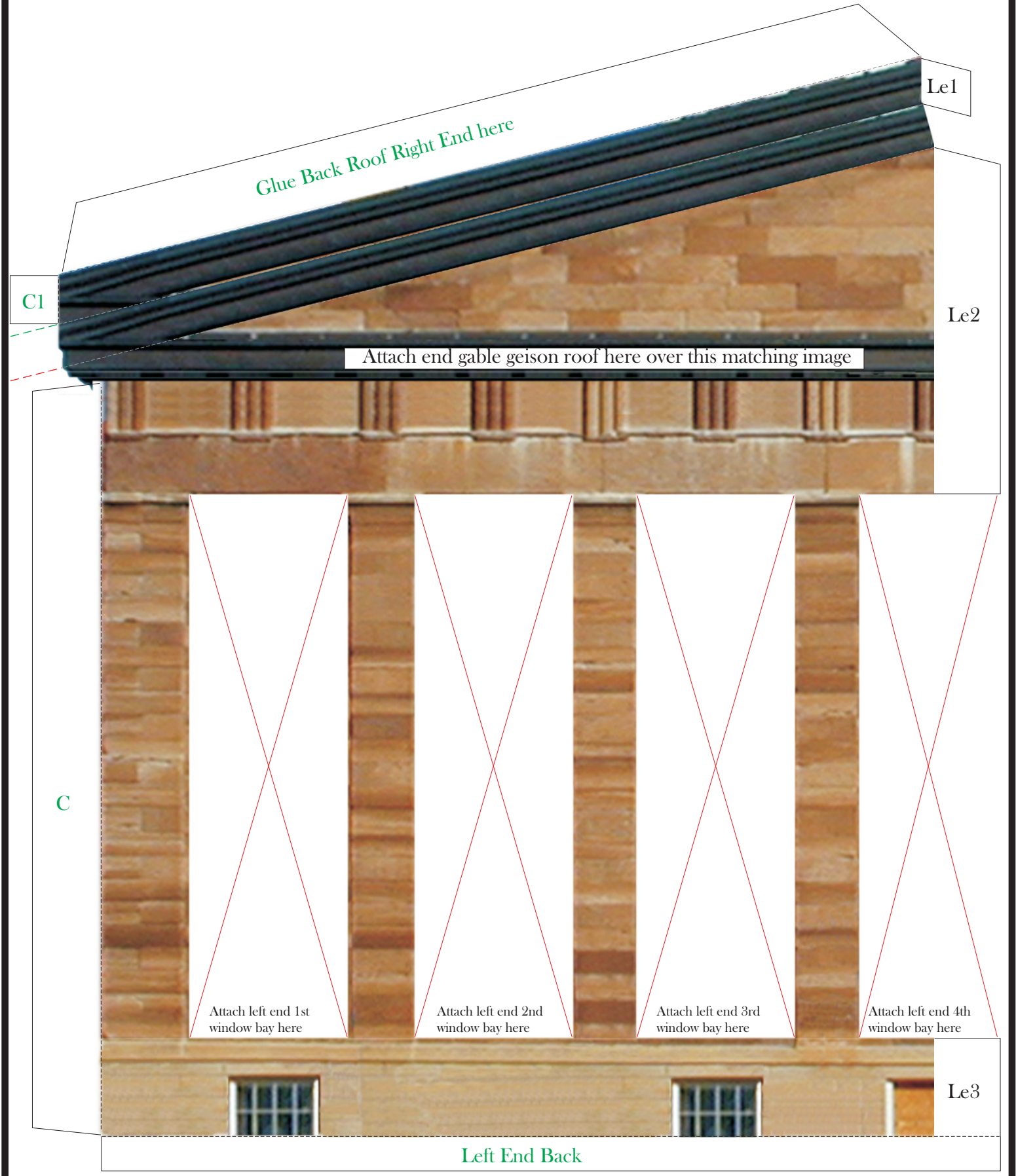
Attach right end 6th window bay here

Attach right end 7th window bay here

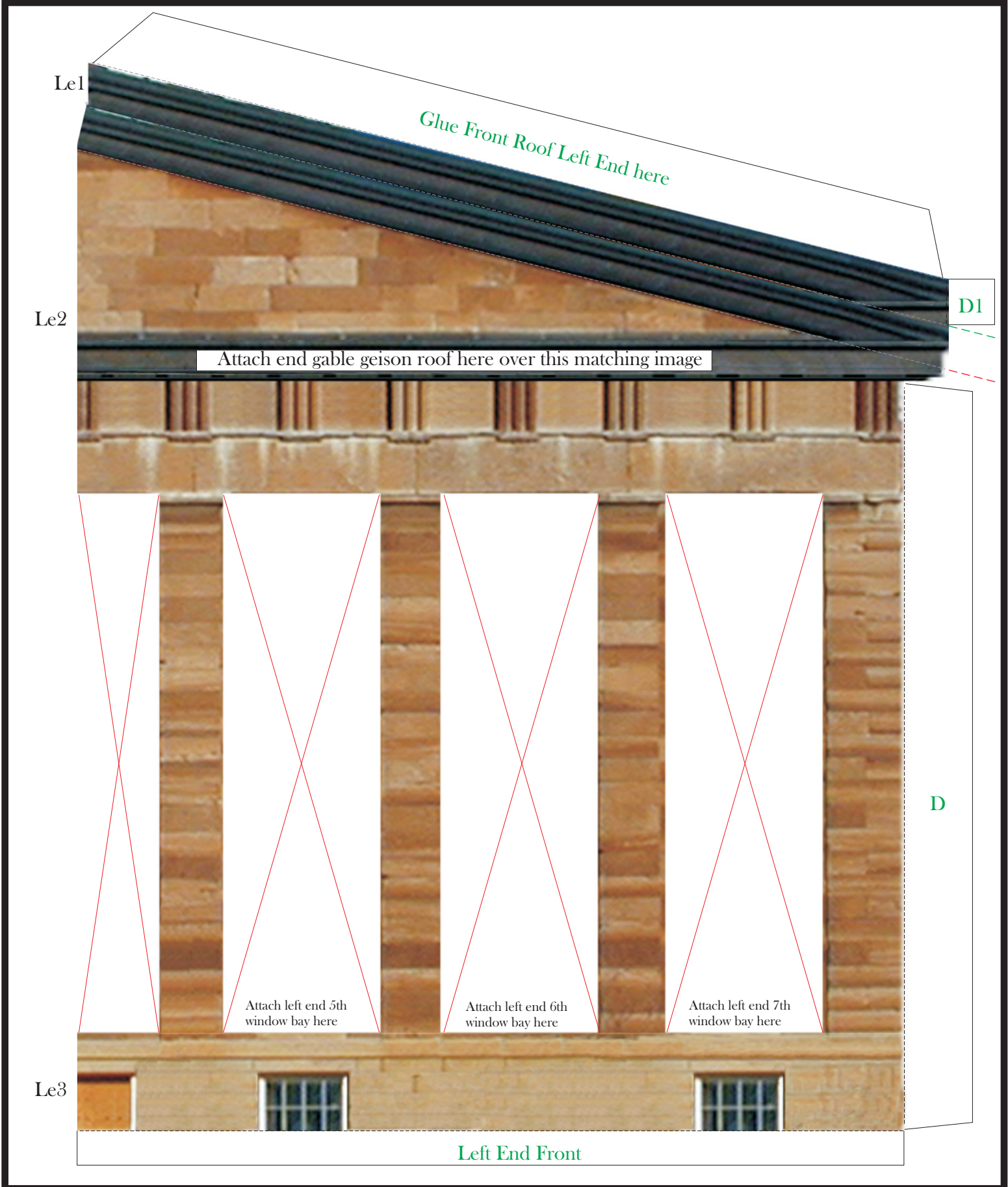
Re3

Right End Back

BUILD YOUR OWN LINCOLN SITES



BUILD YOUR OWN LINCOLN SITES



Le1

Glue Front Roof Left End here

Le2

D1

Attach end gable geison roof here over this matching image

D

Attach left end 5th window bay here

Attach left end 6th window bay here

Attach left end 7th window bay here

Le3

Left End Front

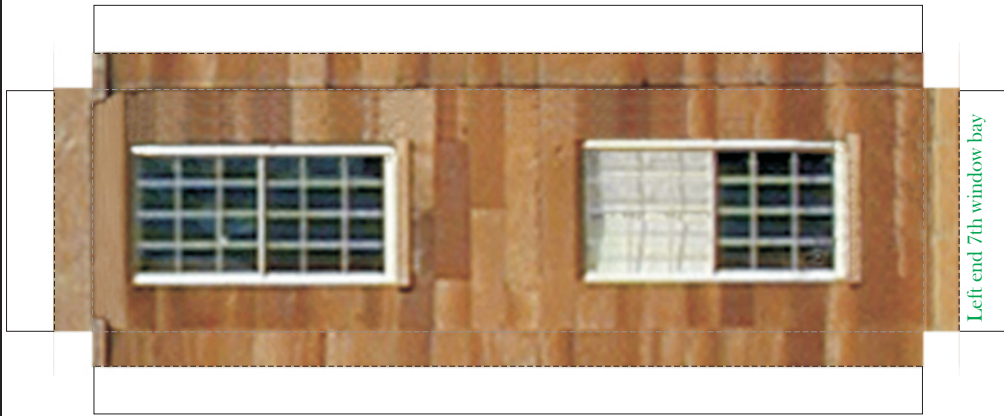
BUILD YOUR OWN LINCOLN SITES



BUILD YOUR OWN LINCOLN SITES



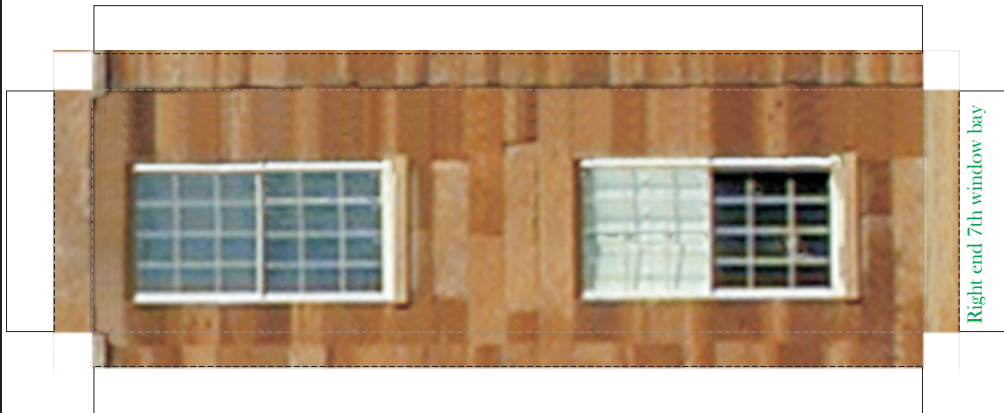
BUILD YOUR OWN LINCOLN SITES



Left end 7th window bay



Left end 6th window bay



Right end 7th window bay



Right end 6th window bay

BUILD YOUR OWN LINCOLN SITES

Glue Front Roof Left End here.

F11

F12

Cut slits at two white lines above and insert Front Porch Side tabs, (9c, 9d) in these slots.

Attach Front 4th window bay here

Attach Front 3rd window bay here

Attach Front 2nd window bay here

Attach Front 1st window bay here

F13

D

Front Left

www.OldStateCapitol.org
www.BuildYourOwnMainStreet.org

www.Lincoln200.net
www.illinois-history.gov www.LookingforLincoln.com

BUILD YOUR OWN LINCOLN SITES

Glue Back Roof Left End here.

B11

B12

Cut slits at two white lines above and insert Front Porch Side tabs, (9c, 9d) in these slots.

Attach Back 4th window bay here

B13

Attach Back 3rd window bay here

Attach Back 2nd window bay here

Attach Back 1st window bay here

Back Left

B

BUILD YOUR OWN LINCOLN SITES

A

Glue Front Roof Right End here.

Fr1

Fr2

Cut slits at two white lines above and insert Front Porch Side tabs, (9a, 9b) in these slots.

Attach Front 6th window bay here

Attach Front 7th window bay here

Attach Front 8th window bay here

Attach Front 9th window bay here

Fr3

Front Right

Old State Capitol, Springfield, IL

BUILD YOUR OWN LINCOLN SITES

Glue Back Roof Right End here.

Br1

Br2

Cut slits at two white lines above and insert Front Porch Side tabs, (9a, 9b) in these slots.

Attach Back 6th window bay here

Attach Back 7th window bay here

Attach Back 8th window bay here

Attach Back 9th window bay here

Br3

Back Right

BUILD YOUR OWN LINCOLN SITES



Front 1st window bay

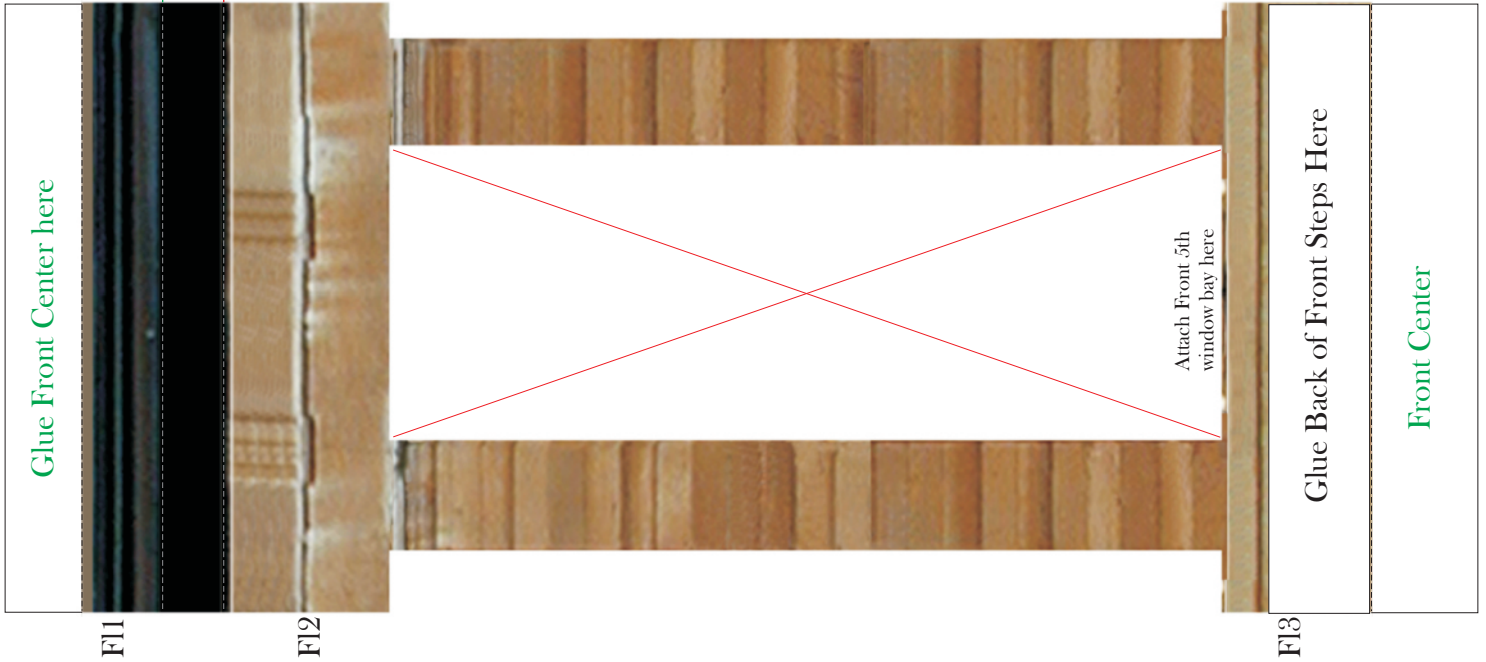
Front 2nd window bay

Front 3rd window bay

Fr1

Fr2

Fr3



Glue Front Center here

Attach Front 5th window bay here

Glue Back of Front Steps Here

Front Center

F11

F12

F13

BUILD YOUR OWN LINCOLN SITES



Back 1st window bay

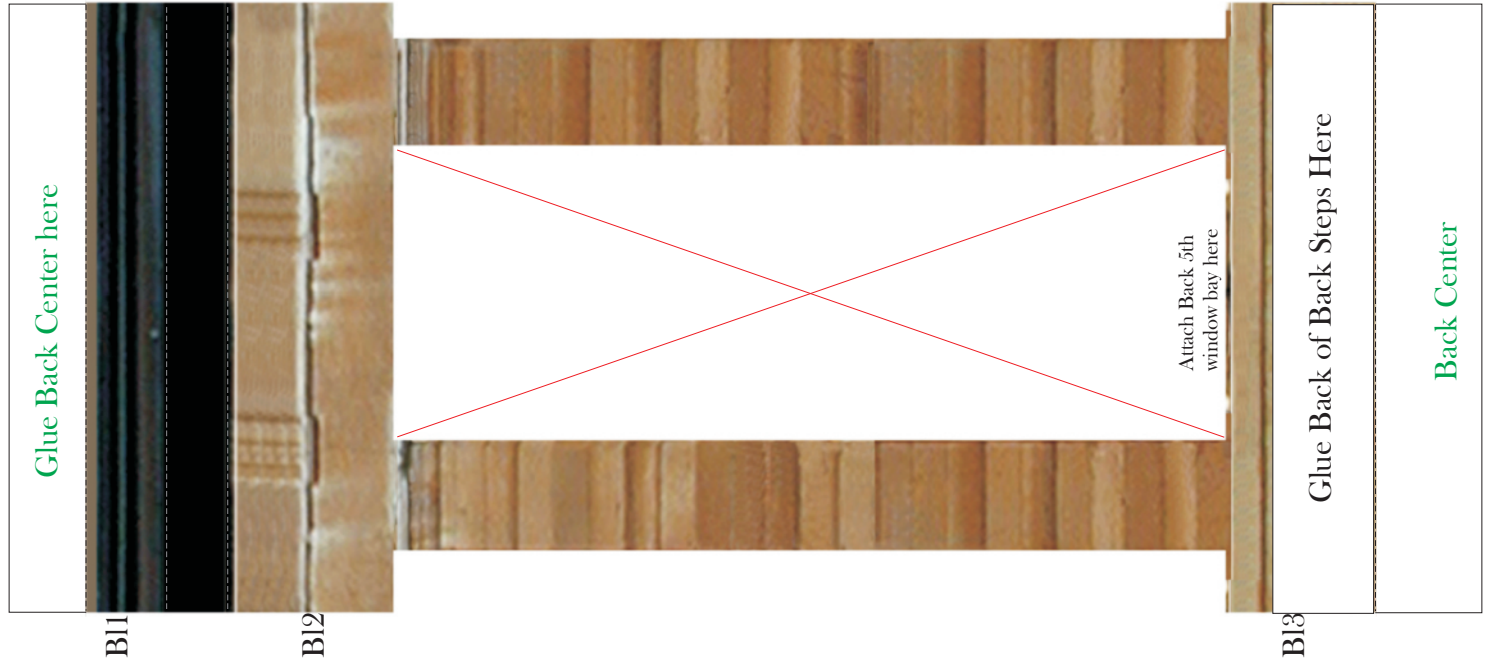
Back 2nd window bay

Back 3rd window bay

Br1

Br2

Br3



Glue Back Center here

Attach Back 5th window bay here

Glue Back of Back Steps Here

Back Center

Br1

Br2

Br3

BUILD YOUR OWN LINCOLN SITES



Front 7th window bay



Front 4th window bay

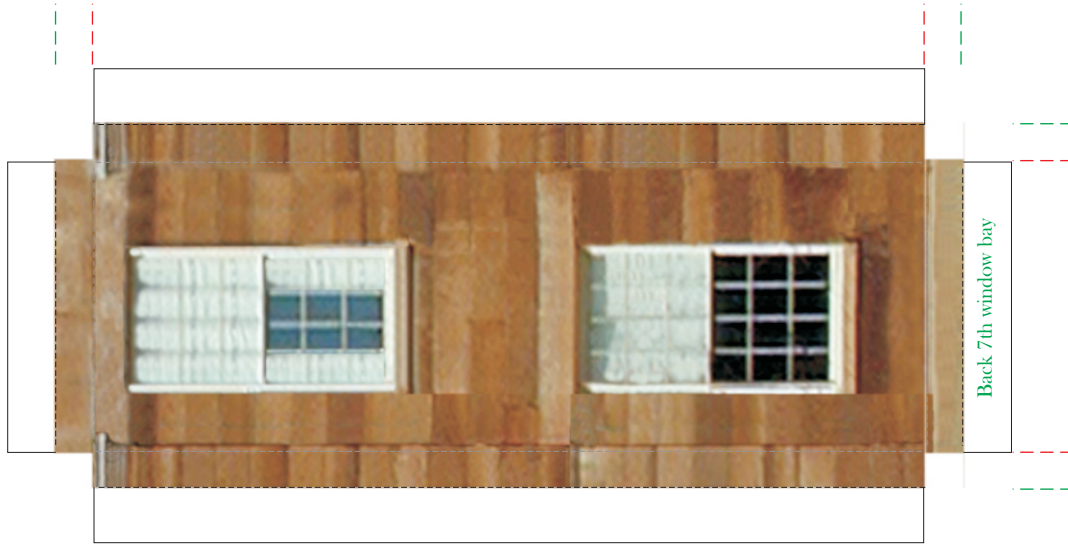


Front 5th window bay

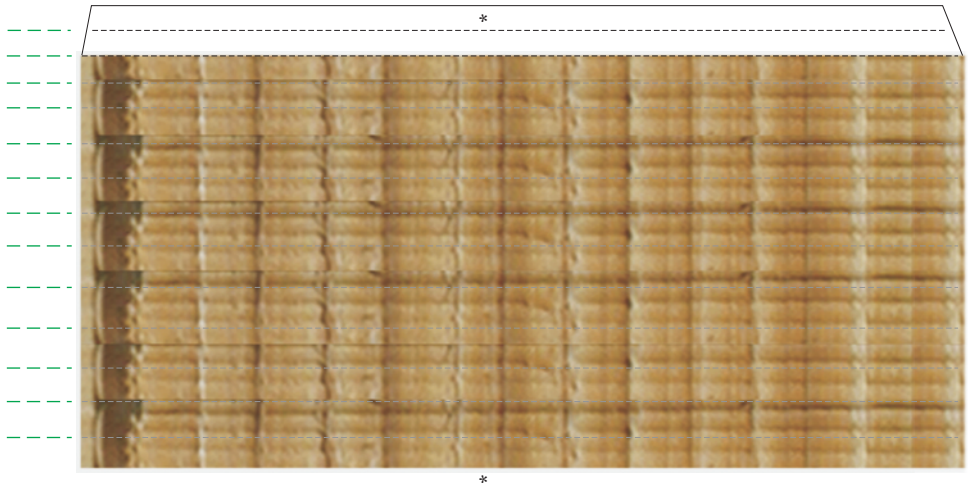


Front 6th window bay

BUILD YOUR OWN LINCOLN SITES



BUILD YOUR OWN LINCOLN SITES

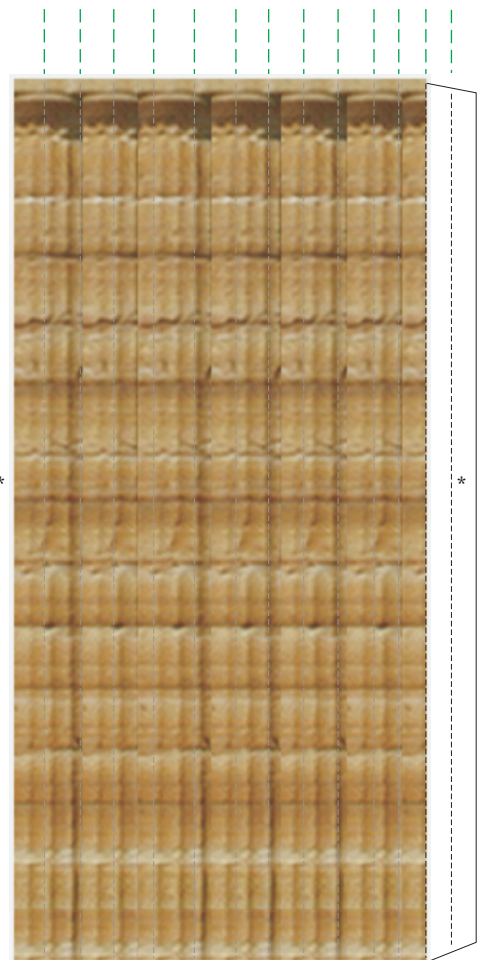


Front Column Top 2

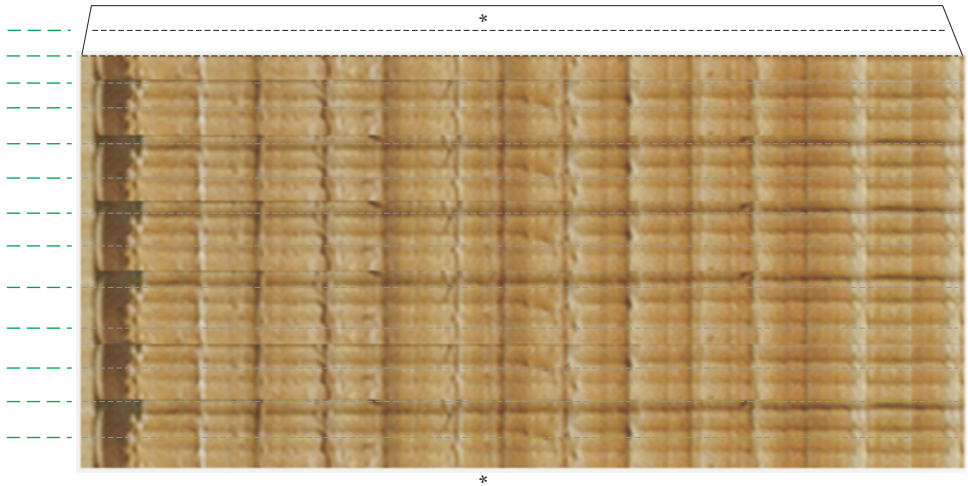
Score lines on each column and cut out bend to form a tube and glue the tab marked * on each tube to the corresponding * on the other side of the column.



Front Column Top 1



BUILD YOUR OWN LINCOLN SITES



Back Column Top 2

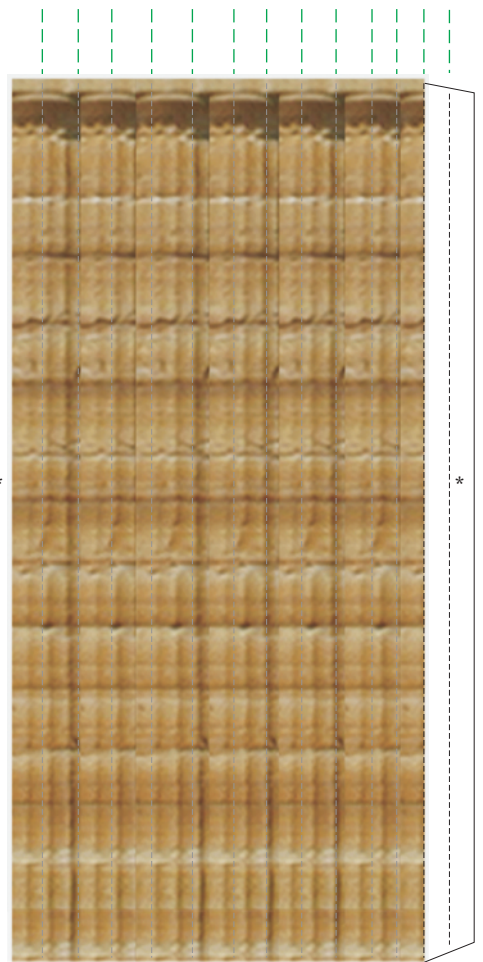


Back 8th window bay

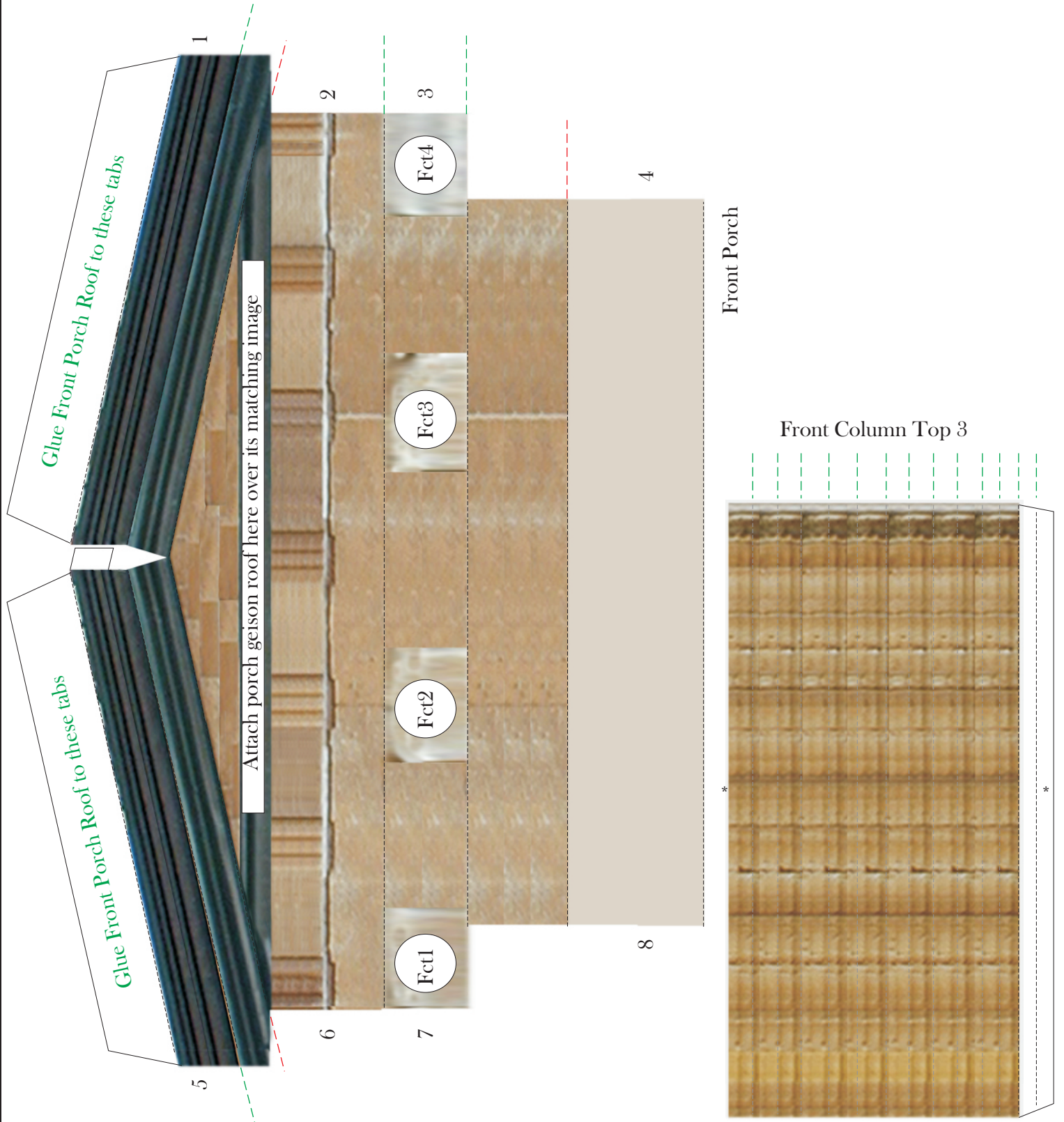


Back 9th window bay

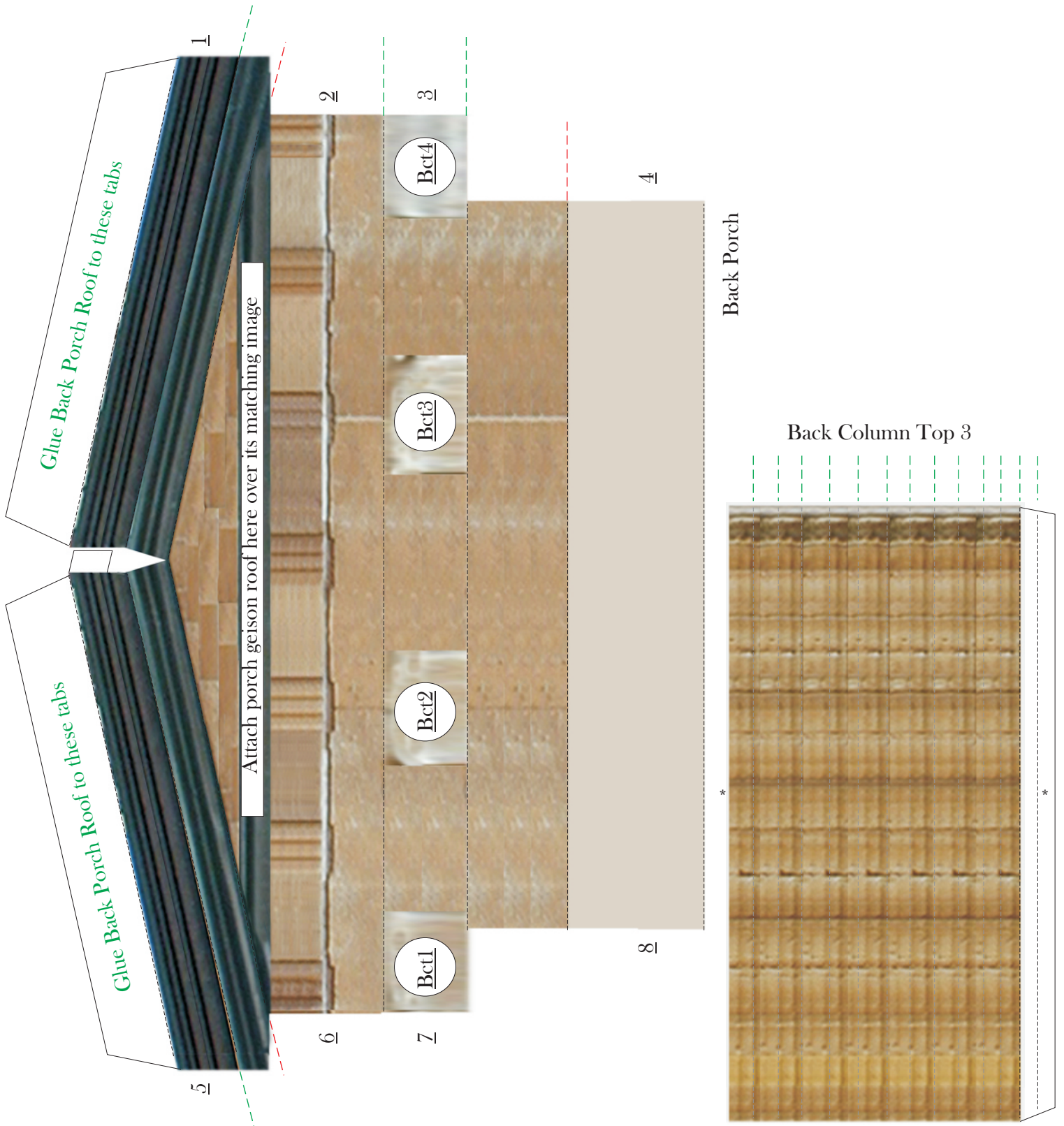
Back Column Top 1



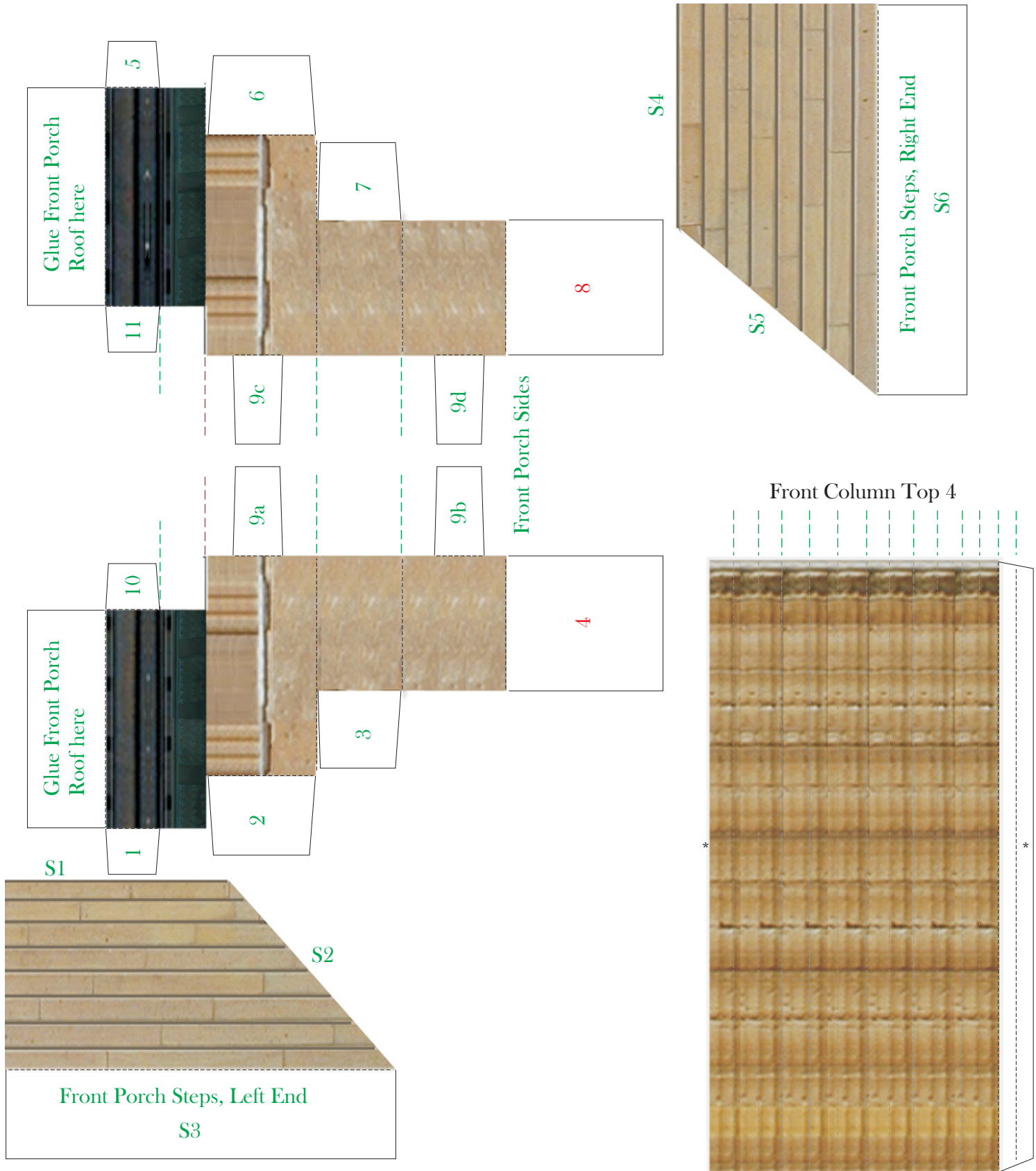
BUILD YOUR OWN LINCOLN SITES



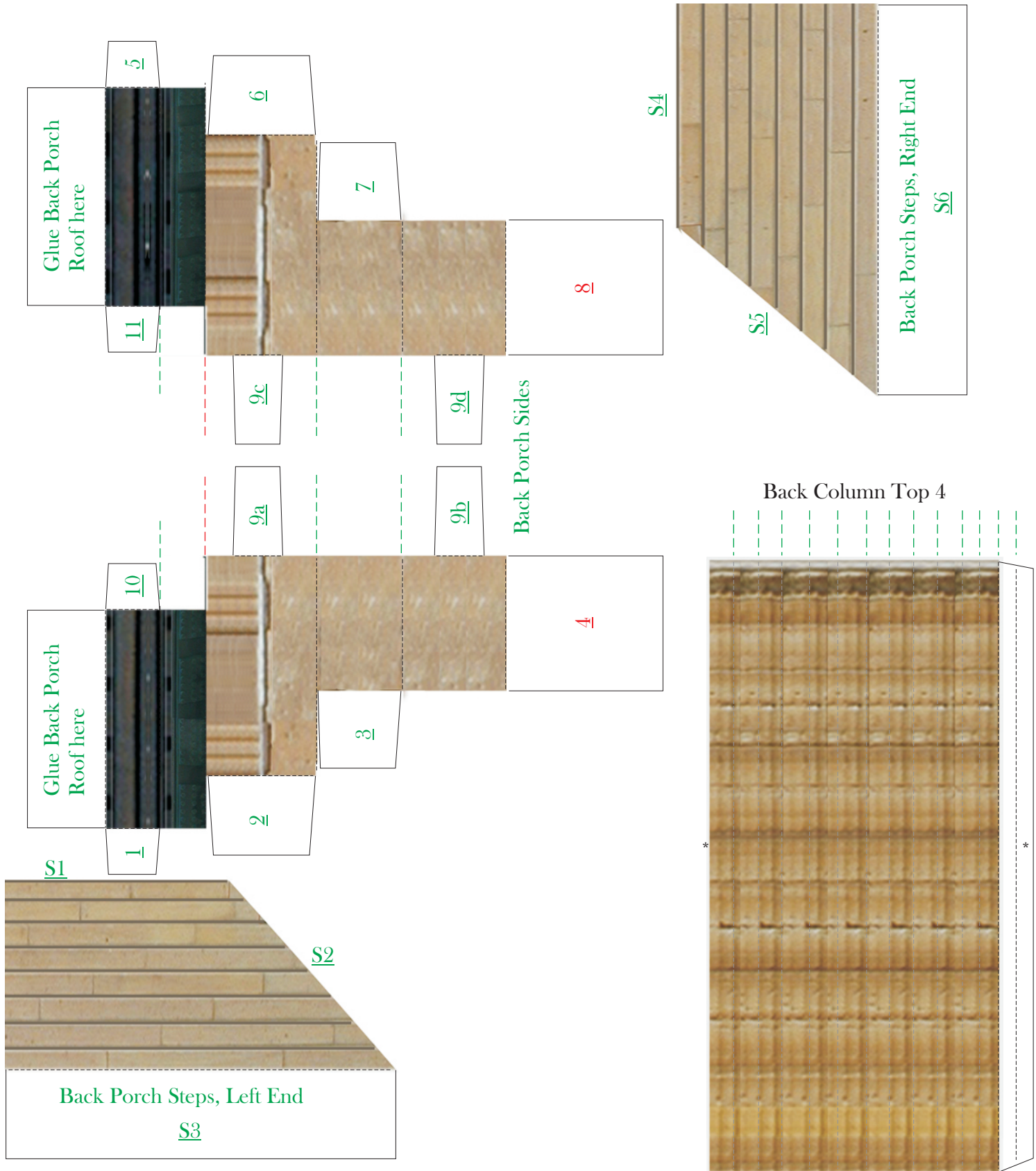
BUILD YOUR OWN LINCOLN SITES



BUILD YOUR OWN LINCOLN SITES



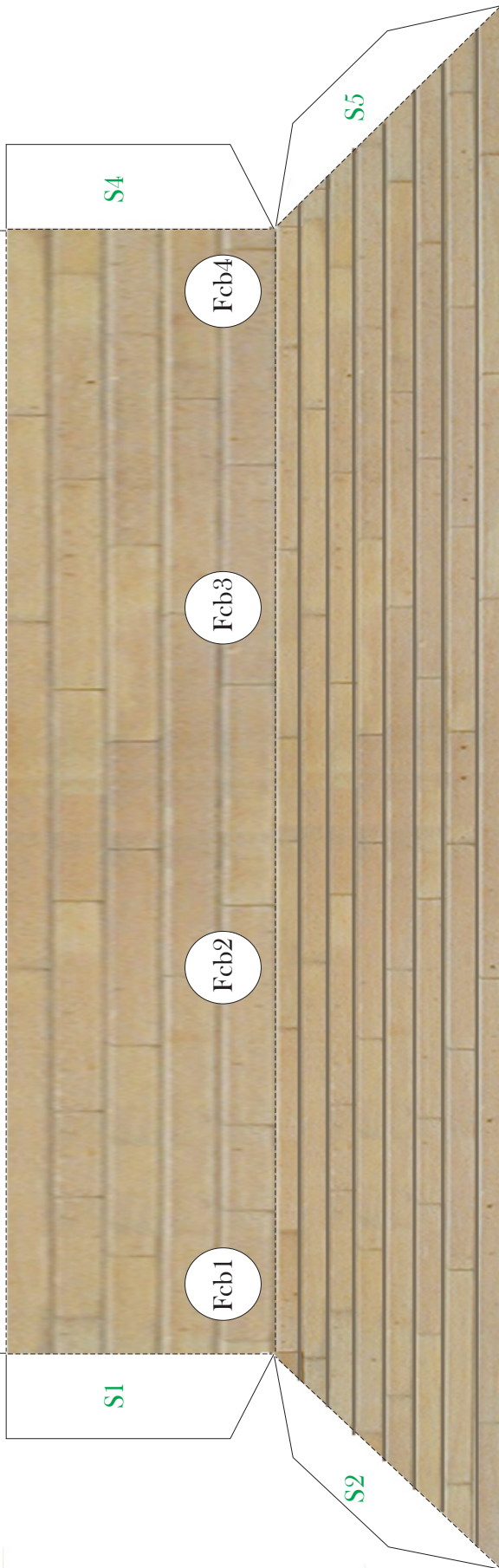
BUILD YOUR OWN LINCOLN SITES



BUILD YOUR OWN LINCOLN SITES

Base of the Back of Front Steps.
Glue this tab to the matching
box on the front tab.

Back of Front Steps

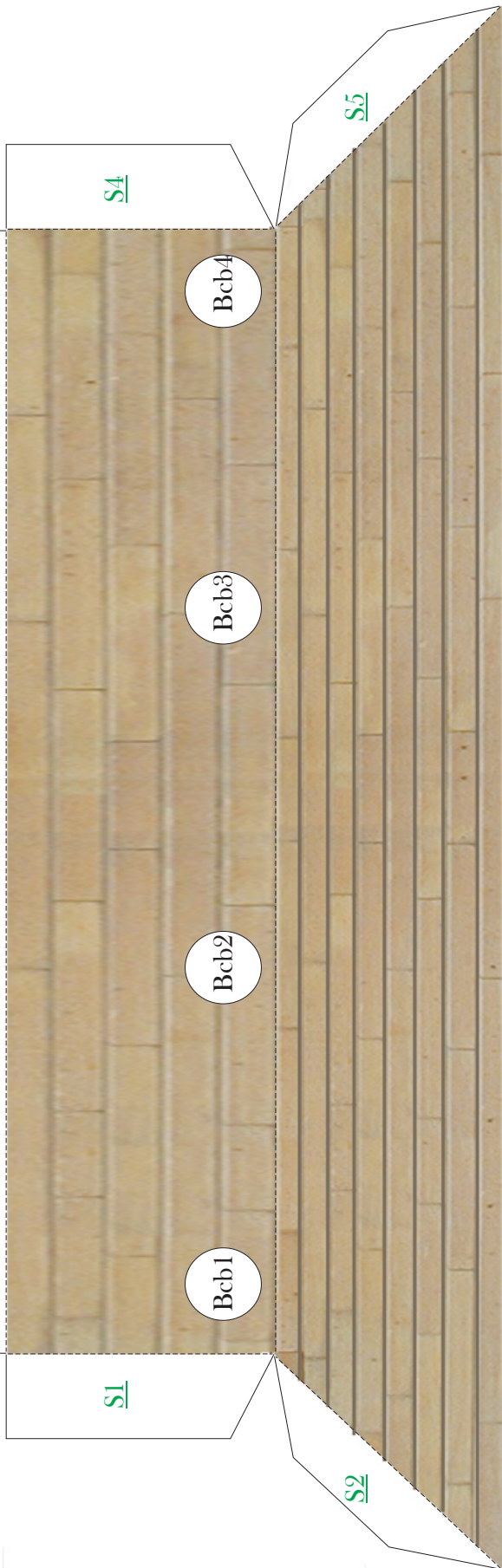


Glue the Base of the Back of Front
Steps tab to this location.

BUILD YOUR OWN LINCOLN SITES

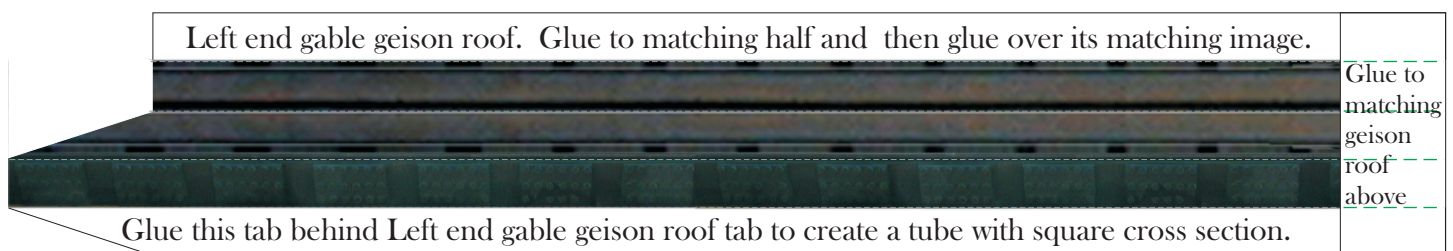
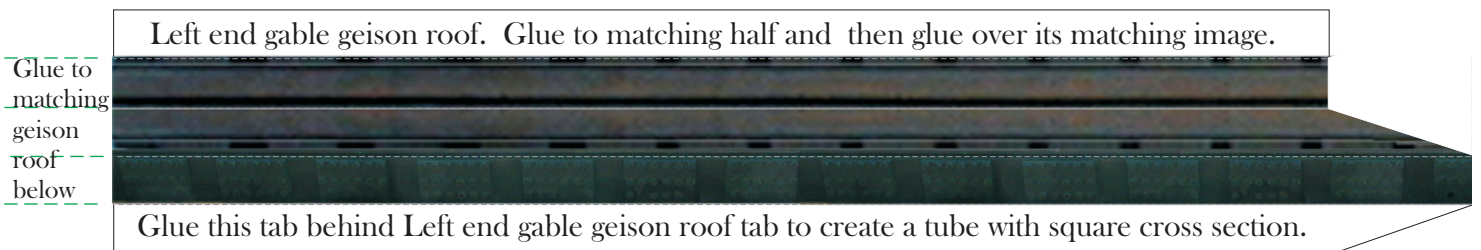
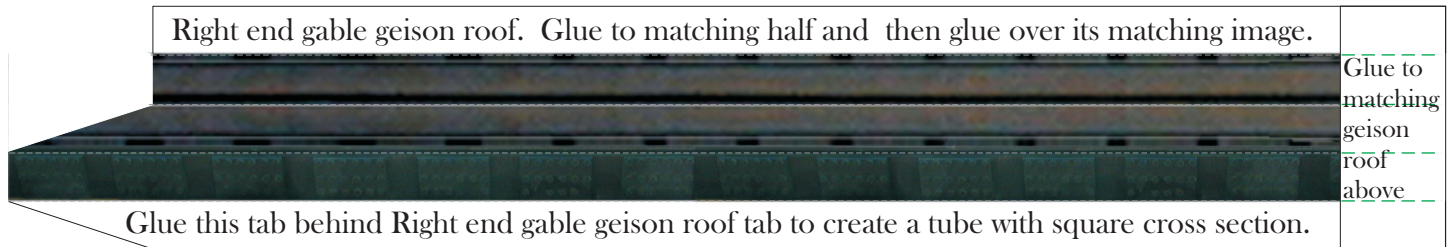
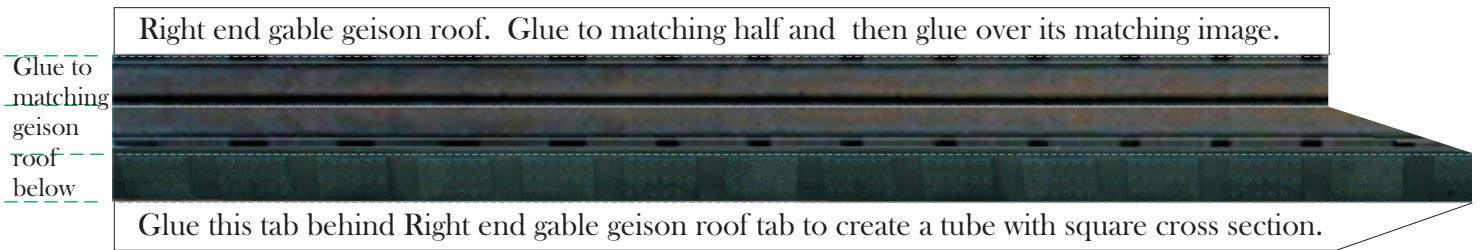
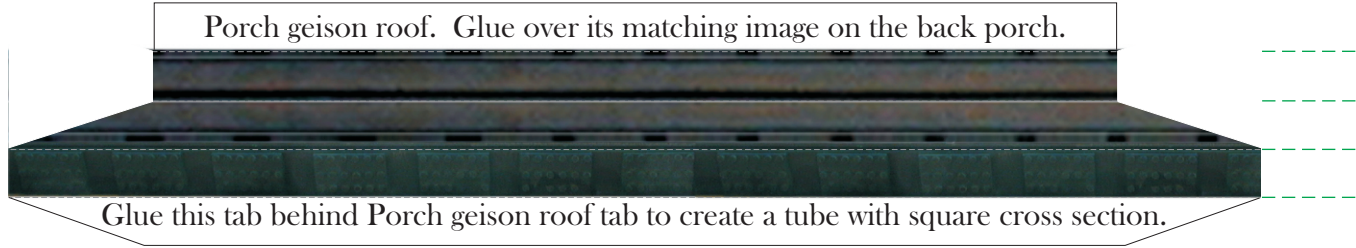
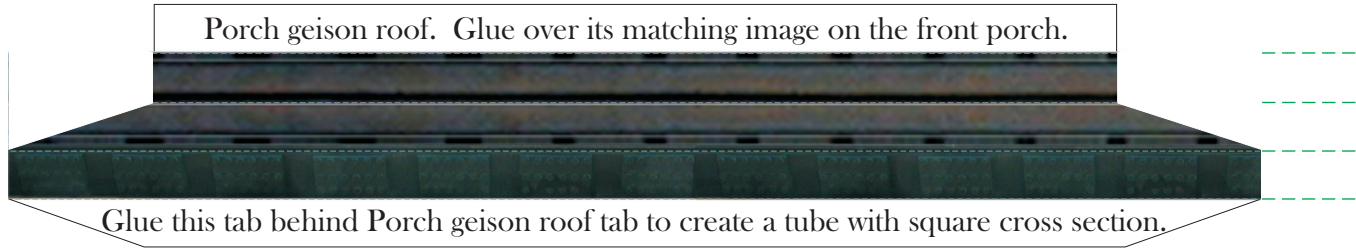
Base of the Back of Back Steps.
Glue this tab to the matching
box on the front tab.

Back of Back Steps



Glue the Base of the Back of Back
Steps tab to this location.

BUILD YOUR OWN LINCOLN SITES



BUILD YOUR OWN LINCOLN SITES

Bend down 90 deg. and glue to front roof center's right tab.

Bend down 90 deg. and glue to back roof left end top tab.

Insert toothpick into small round hole as lightening rod

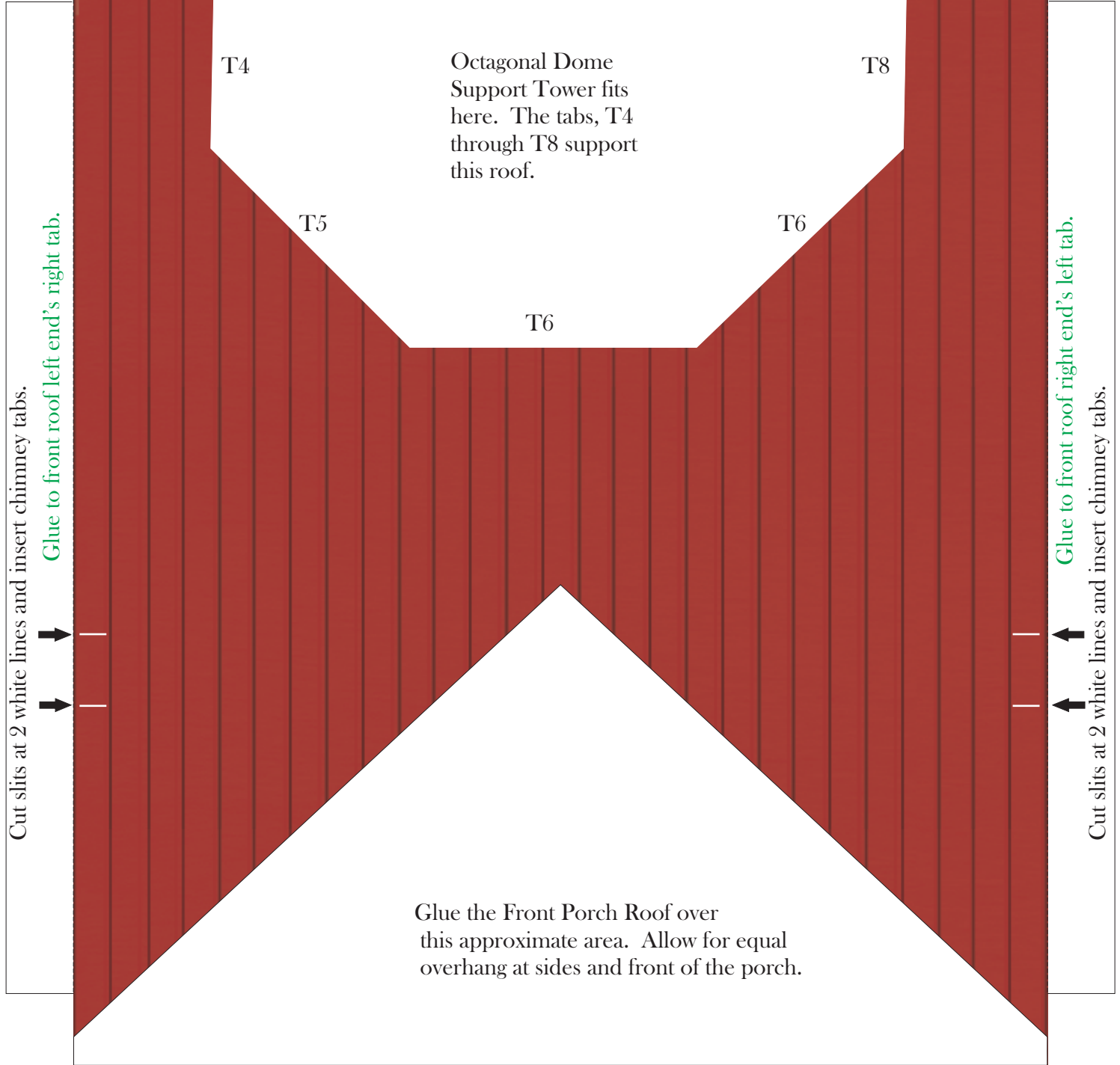
Cut slits at 2 white lines and insert chimney tabs.

Front Roof, Right End

BUILD YOUR OWN LINCOLN SITES

Bend down 90 deg.
and glue to back roof
center top tab.

Bend down 90 deg.
and glue to back roof
center top tab.



Octagonal Dome
Support Tower fits
here. The tabs, T4
through T8 support
this roof.

Cut slits at 2 white lines and insert chimney tabs.

Glue to front roof left end's right tab.

Glue to front roof right end's left tab.

Cut slits at 2 white lines and insert chimney tabs.

Glue the Front Porch Roof over
this approximate area. Allow for equal
overhang at sides and front of the porch.

Front Roof, Center

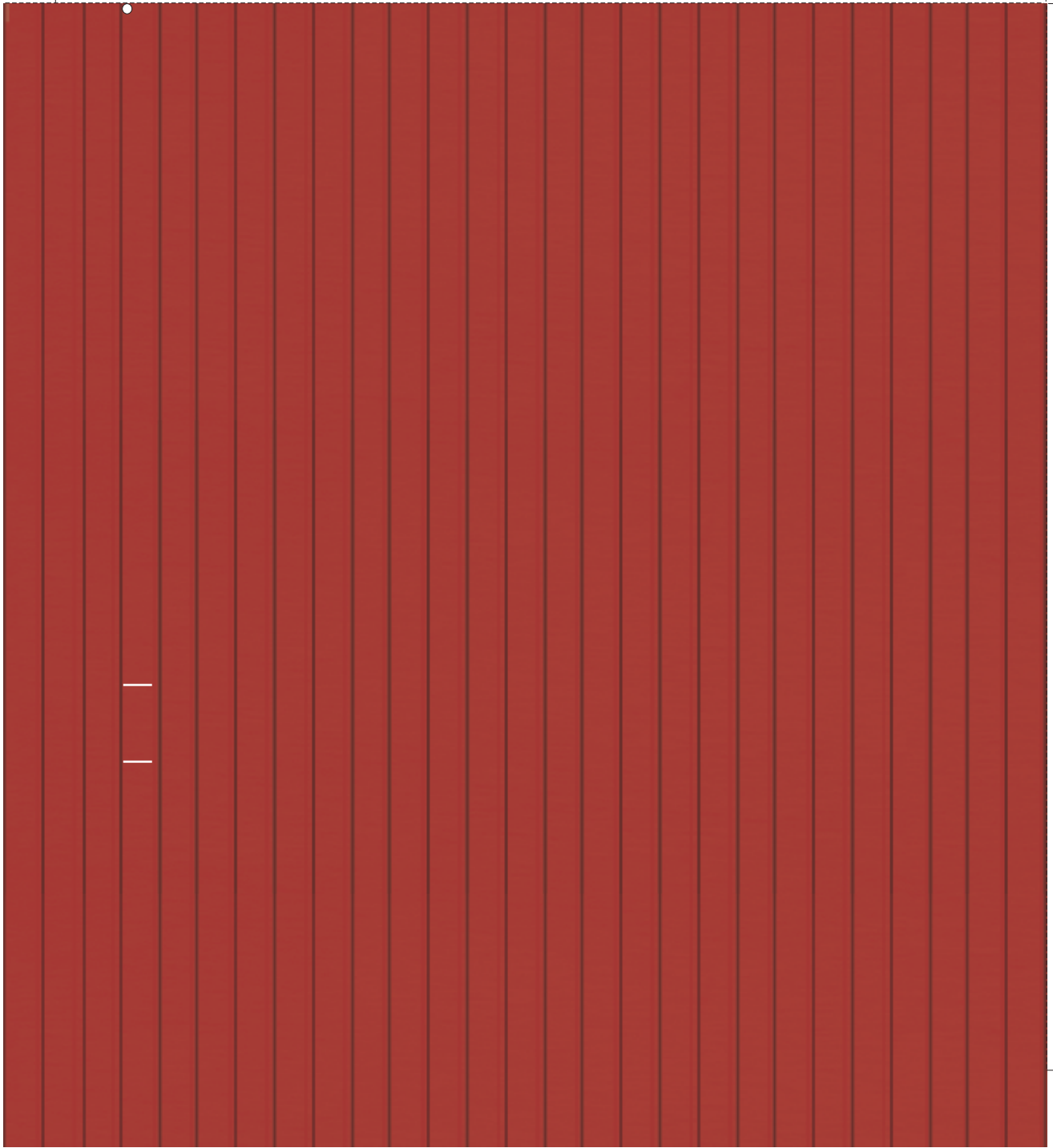
BUILD YOUR OWN LINCOLN SITES

Insert toothpick
into small round
hole as lightning rod



Bend down 90 deg. and glue to back roof right end top tab.

Cut slits at 2 white lines and insert chimney tabs.



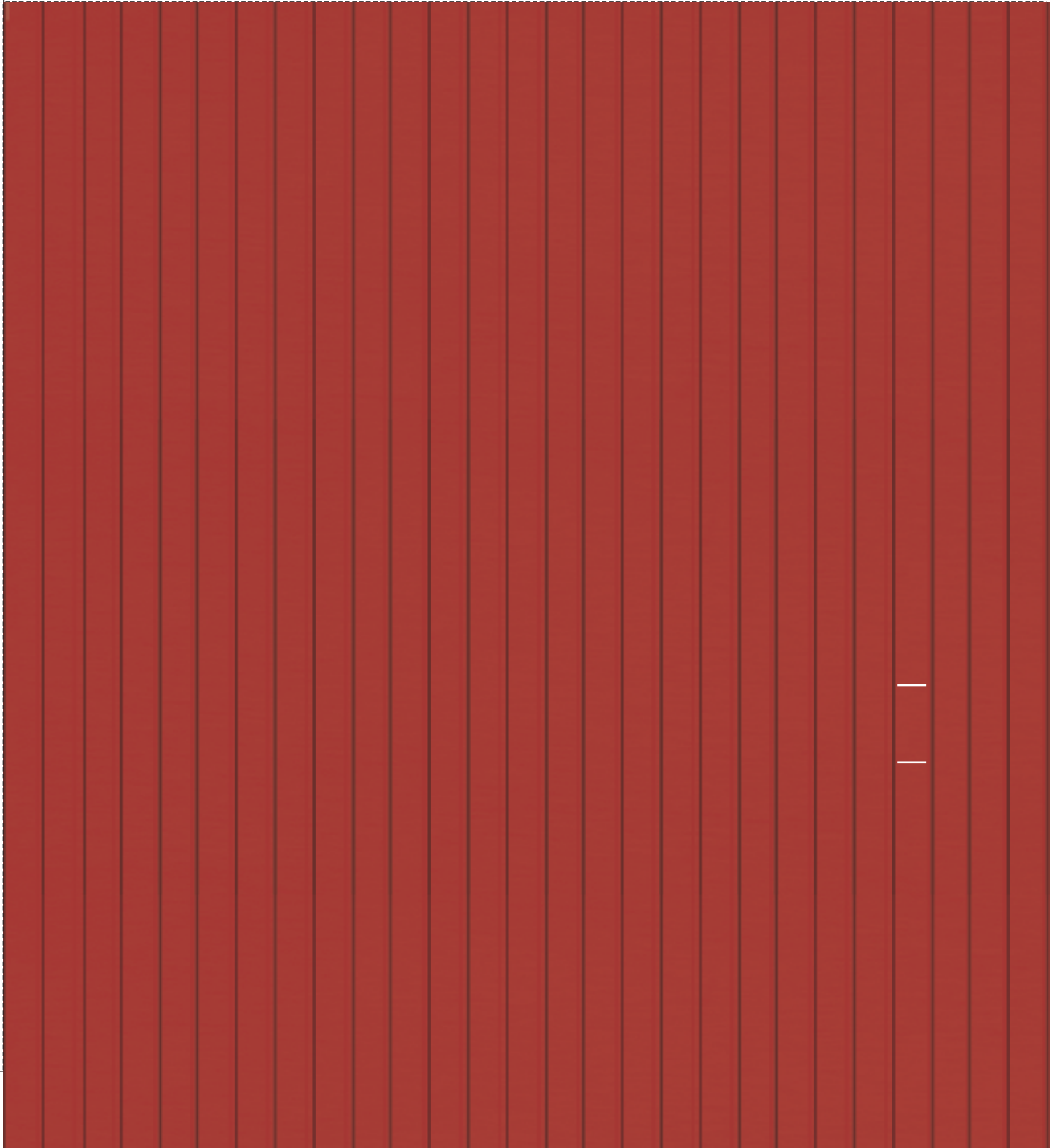
Glue to front roof center's left tab.

Front Roof, Left End

BUILD YOUR OWN LINCOLN SITES

Bend down 90 deg. and glue to front roof left end top tab.

Glue to back roof center's right tab.



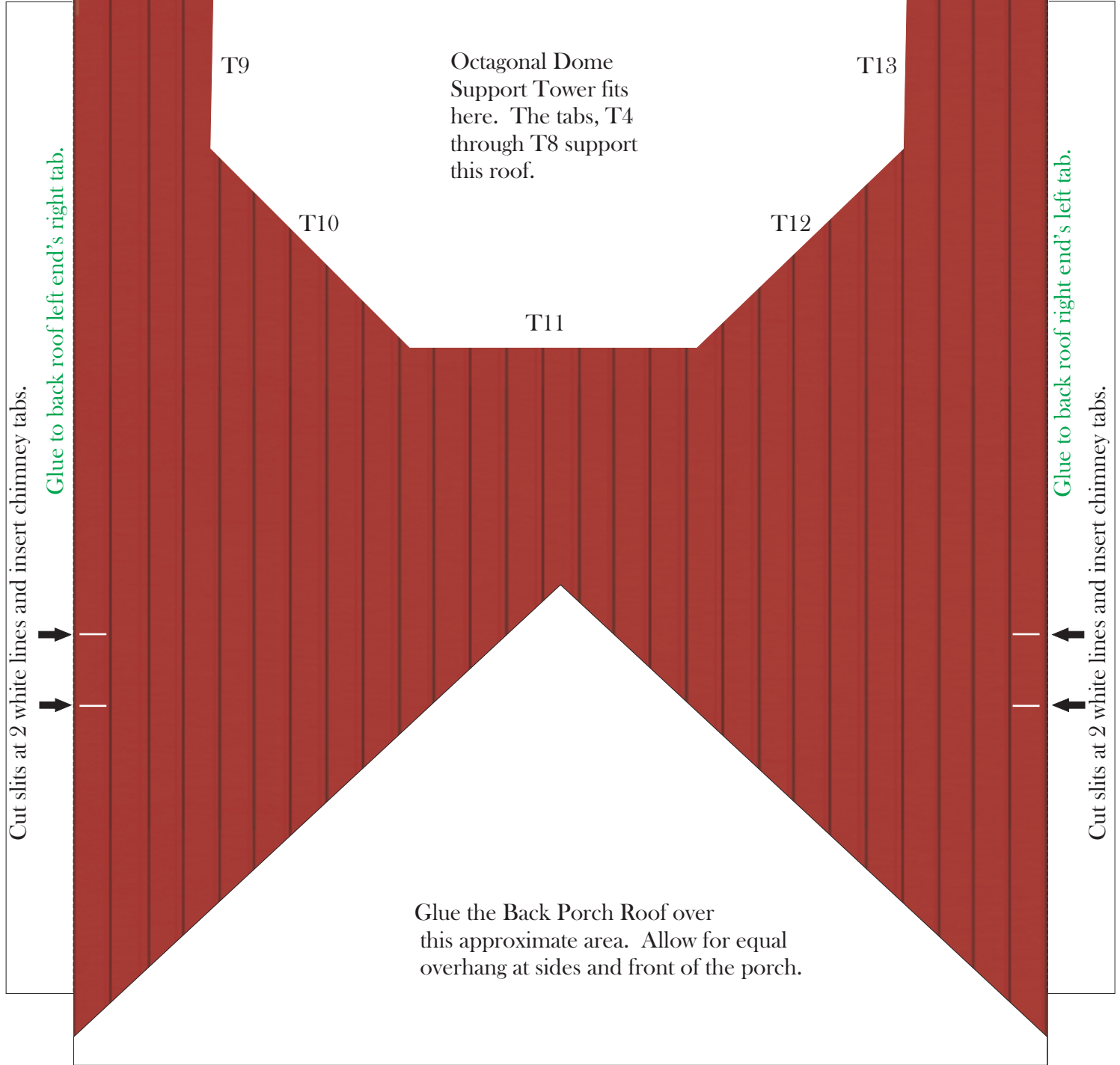
Cut slits at 2 white lines and insert chimney tabs.

Back Roof, Right End

BUILD YOUR OWN LINCOLN SITES

Bend down 90 deg.
and glue to front roof
center top tab.

Bend down 90 deg.
and glue to front roof
center top tab.



Back Roof, Center

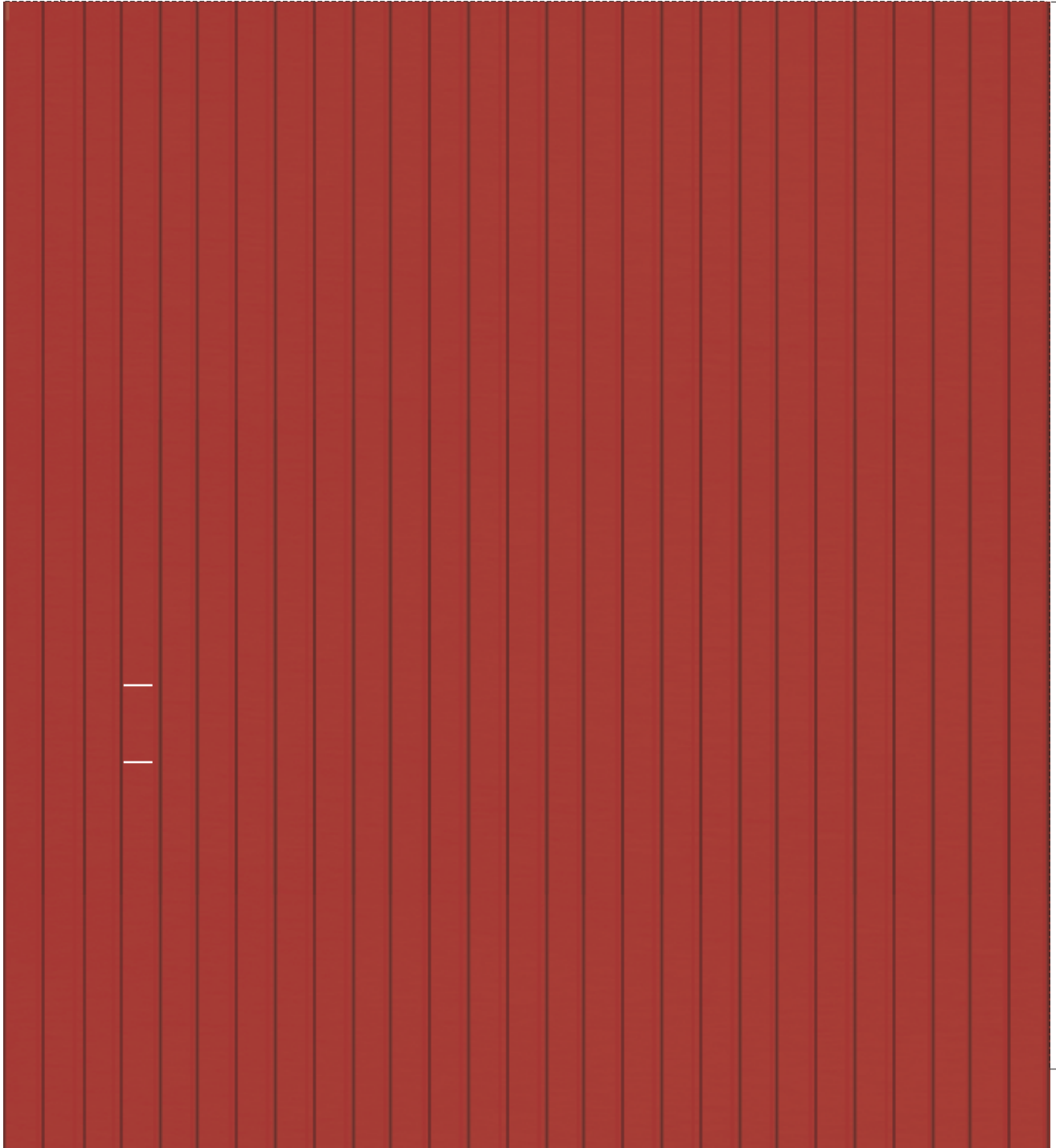
BUILD YOUR OWN LINCOLN SITES

Bend down 90 deg. and glue to front roof right end top tab.

Cut slits at 2 white lines and insert chimney tabs.

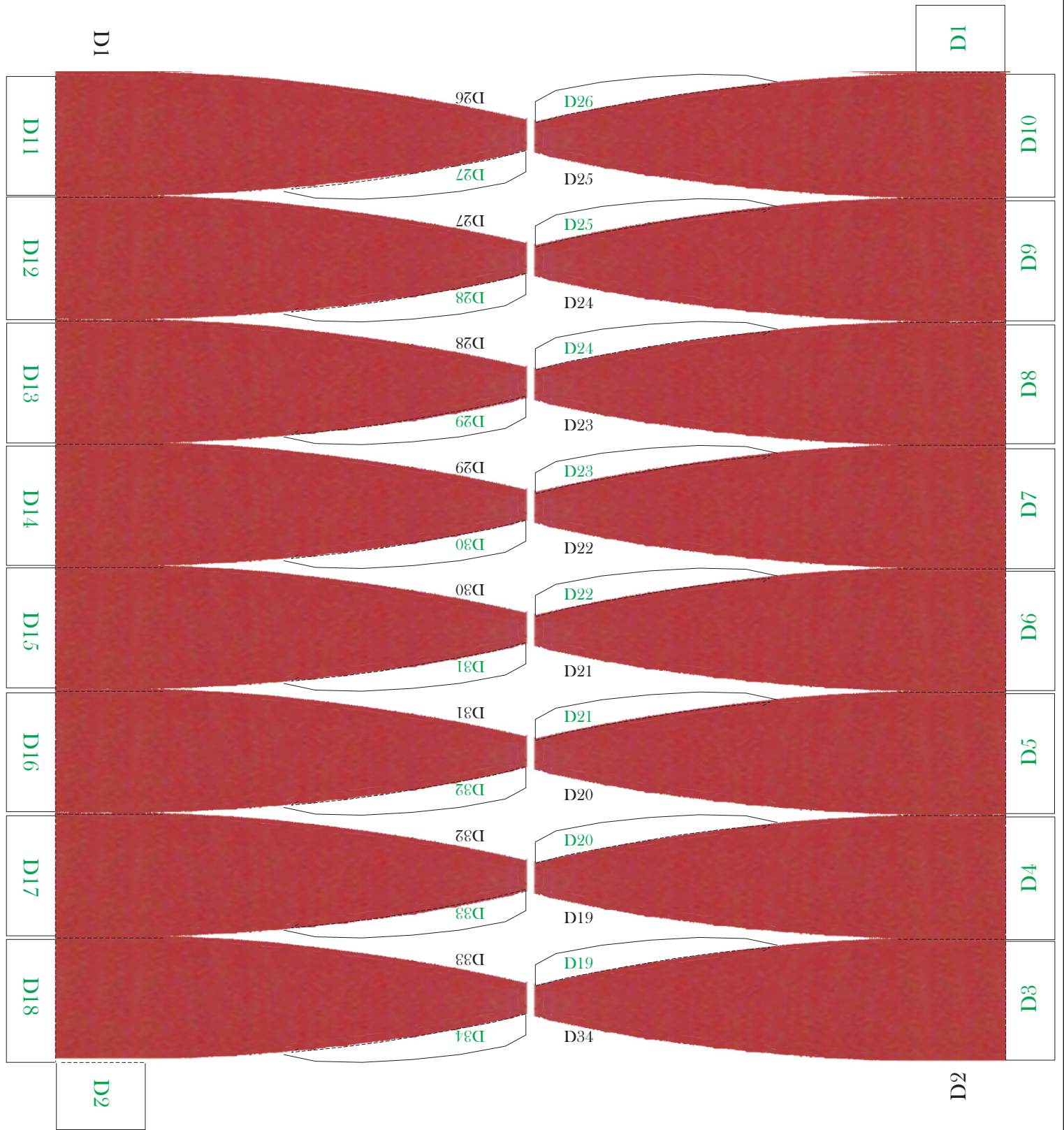


Glue to back roof center's left tab.

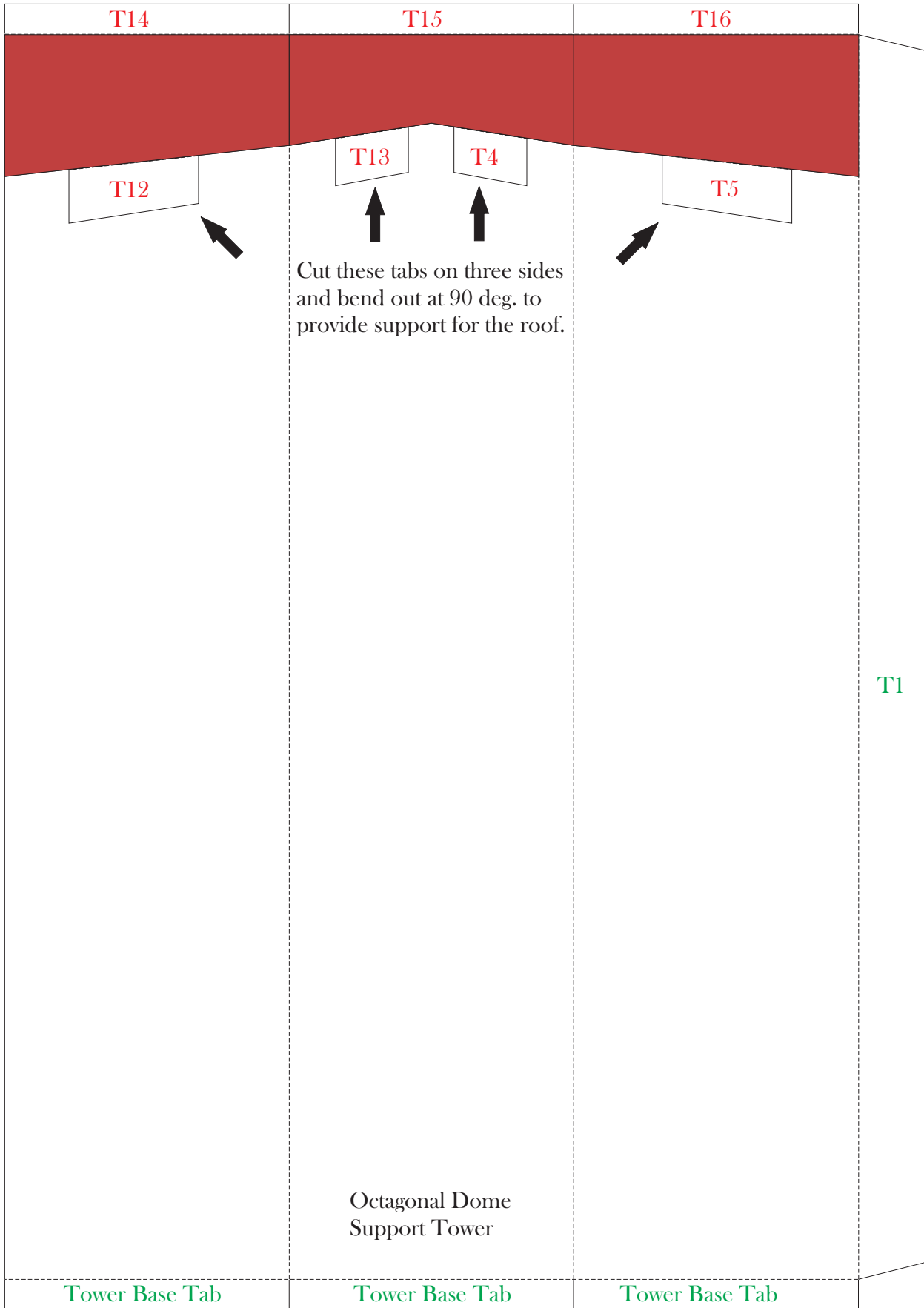


Bact Roof, Left End

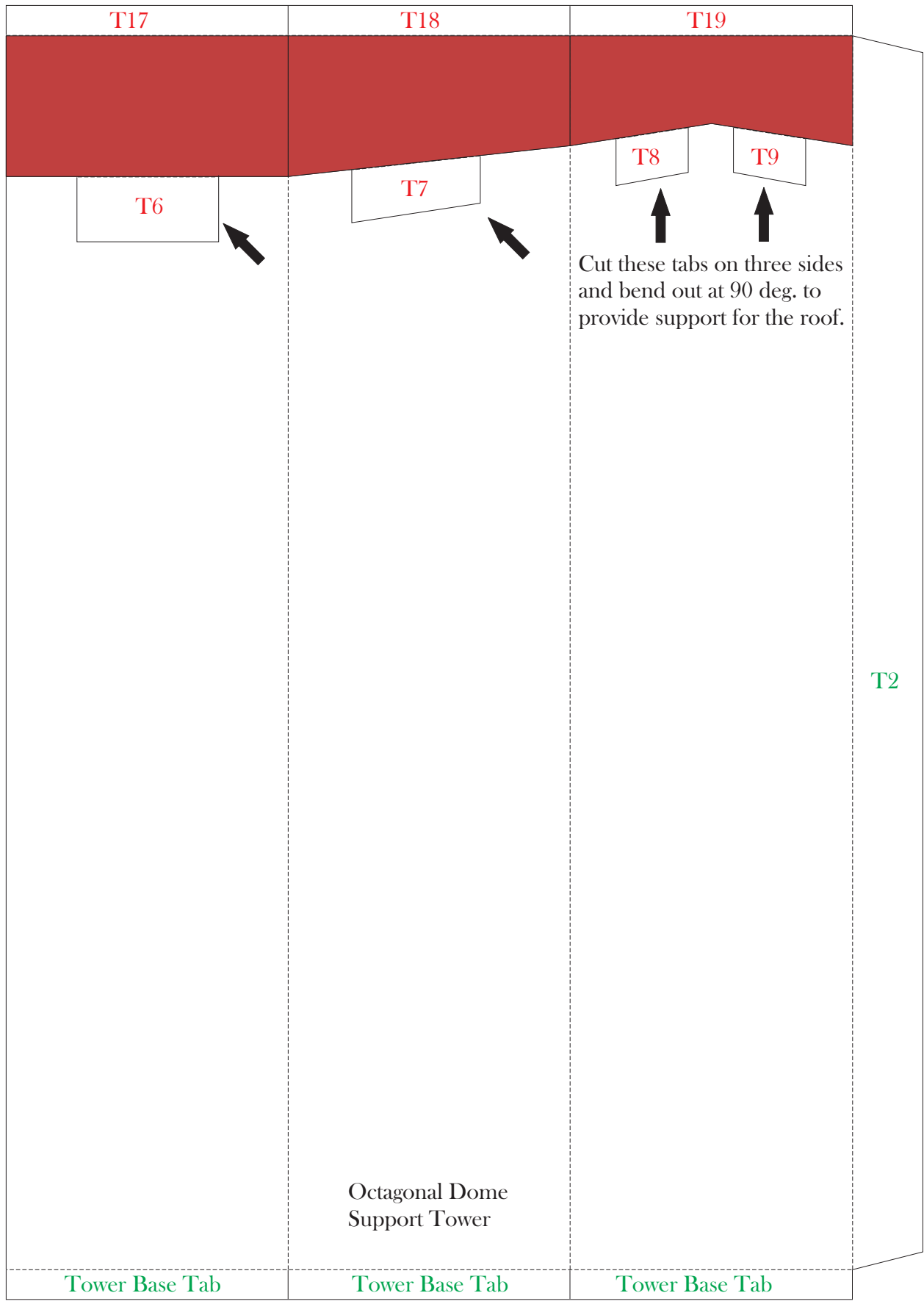
BUILD YOUR OWN LINCOLN SITES



BUILD YOUR OWN LINCOLN SITES



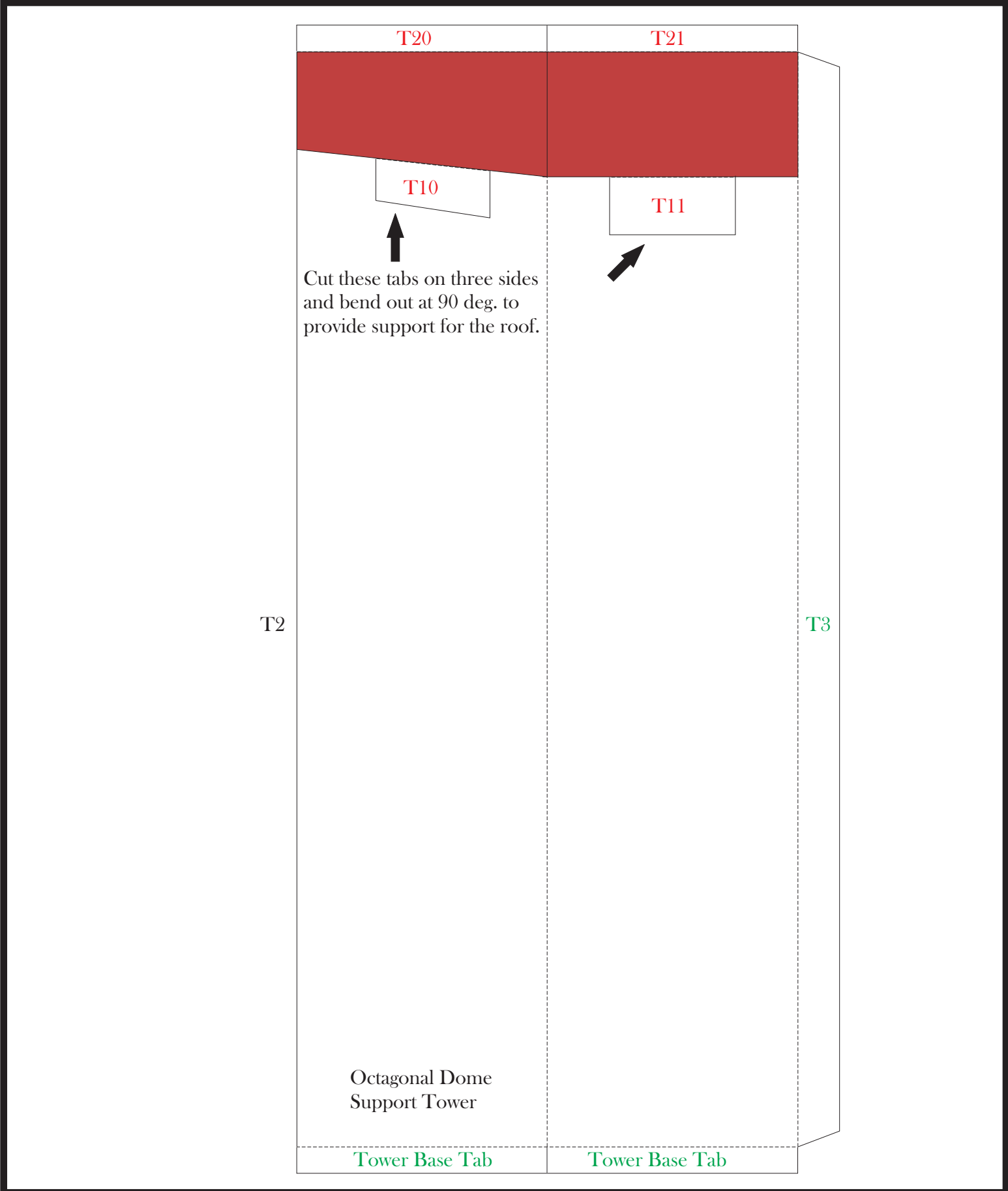
BUILD YOUR OWN LINCOLN SITES



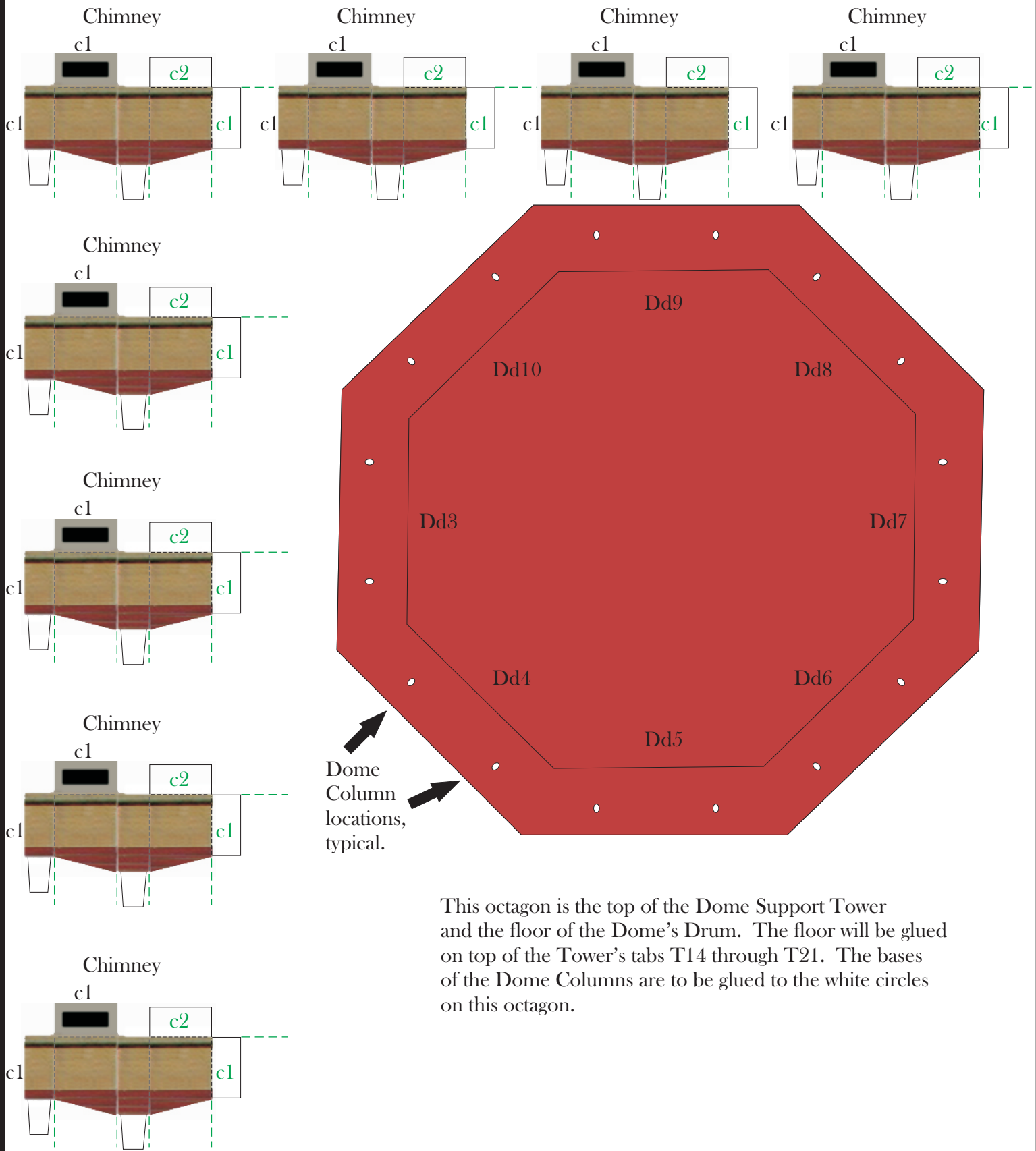
Cut these tabs on three sides and bend out at 90 deg. to provide support for the roof.

Octagonal Dome Support Tower

BUILD YOUR OWN LINCOLN SITES

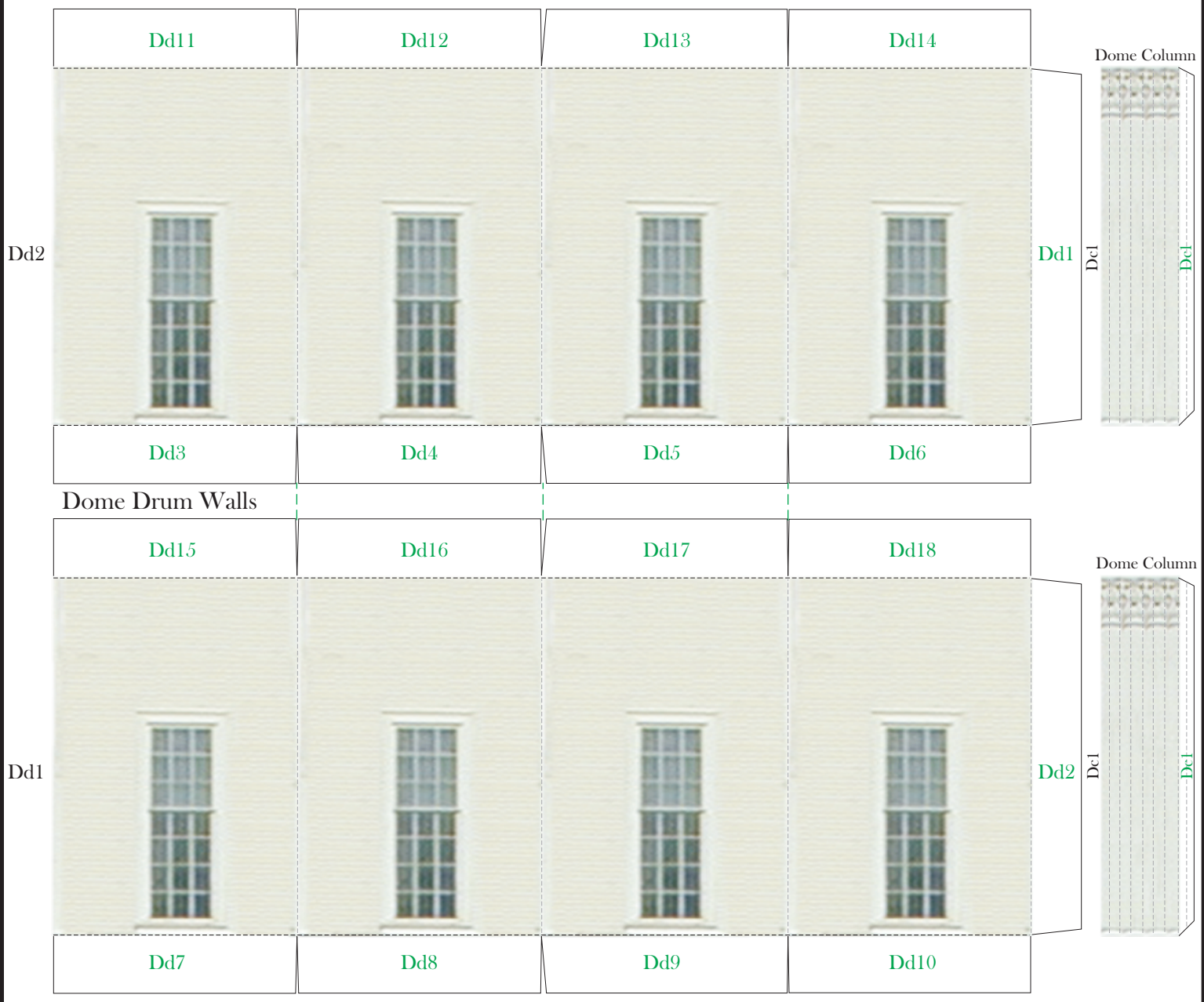
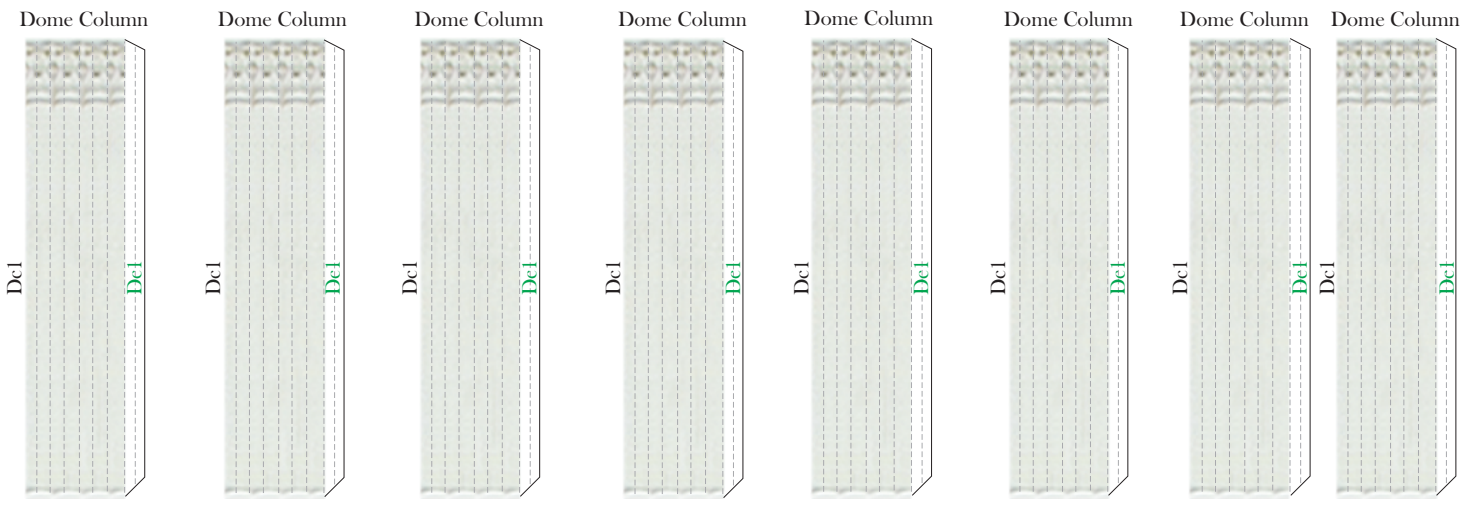


BUILD YOUR OWN LINCOLN SITES

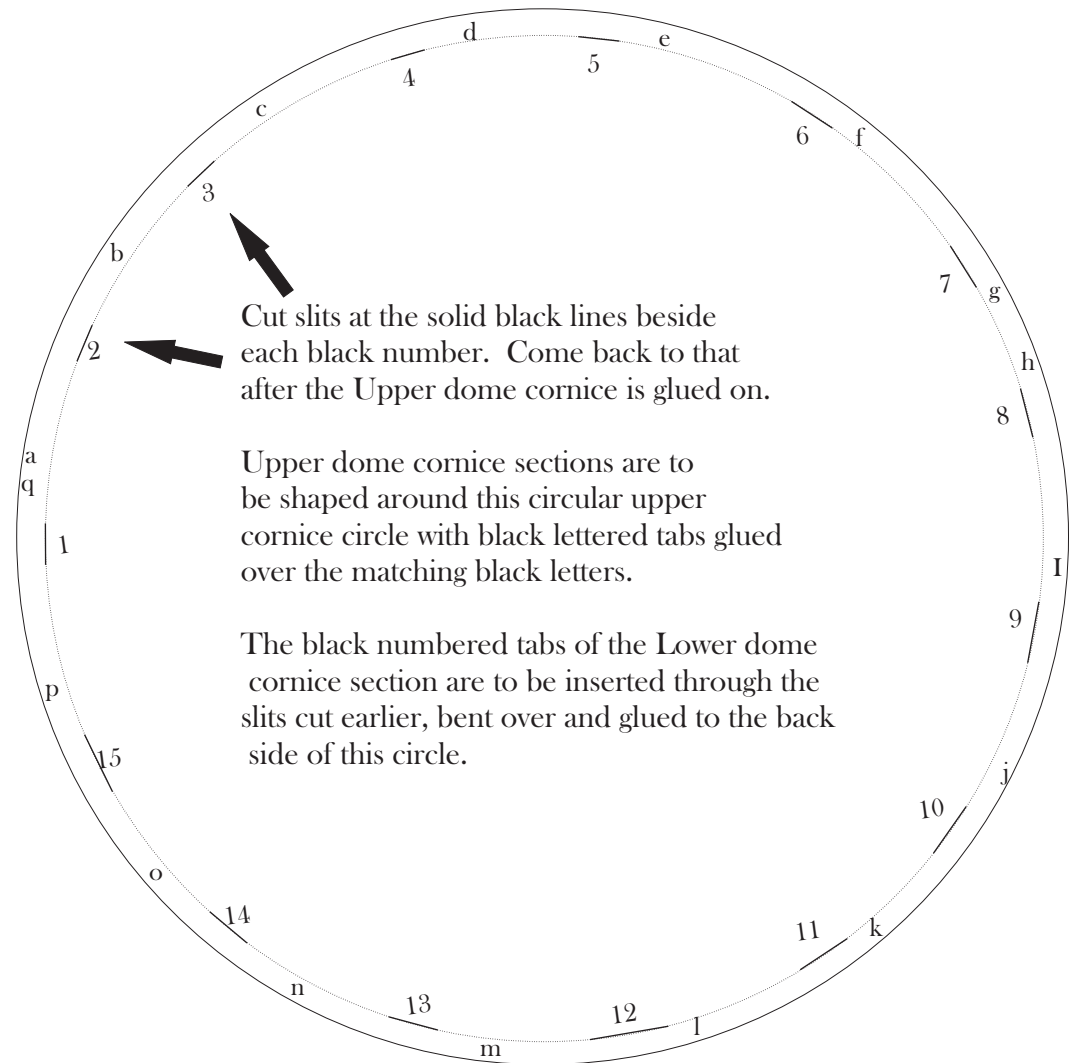
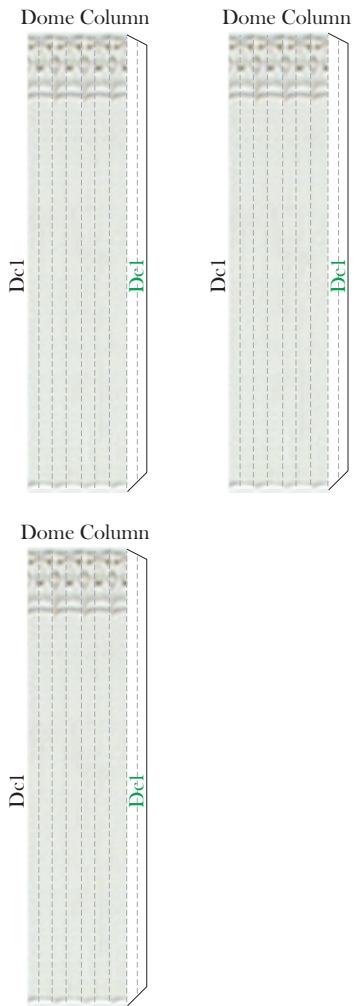


This octagon is the top of the Dome Support Tower and the floor of the Dome's Drum. The floor will be glued on top of the Tower's tabs T14 through T21. The bases of the Dome Columns are to be glued to the white circles on this octagon.

BUILD YOUR OWN LINCOLN SITES



BUILD YOUR OWN LINCOLN SITES



Cut slits at the solid black lines beside each black number. Come back to that after the Upper dome cornice is glued on.

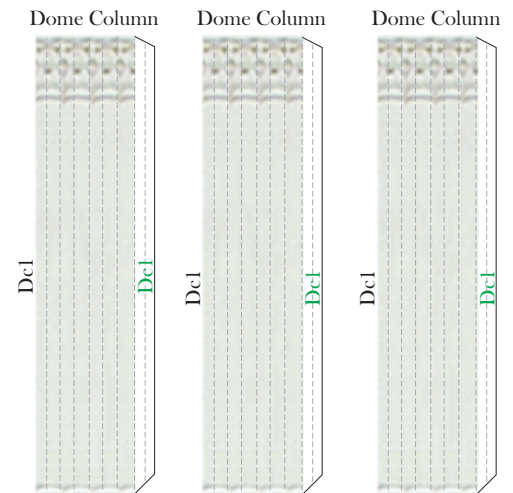
Upper dome cornice sections are to be shaped around this circular upper cornice circle with black lettered tabs glued over the matching black letters.

The black numbered tabs of the Lower dome cornice section are to be inserted through the slits cut earlier, bent over and glued to the back side of this circle.

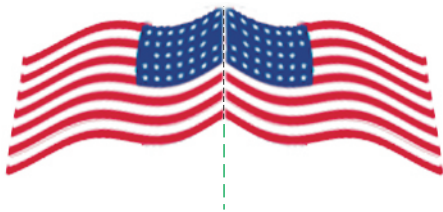
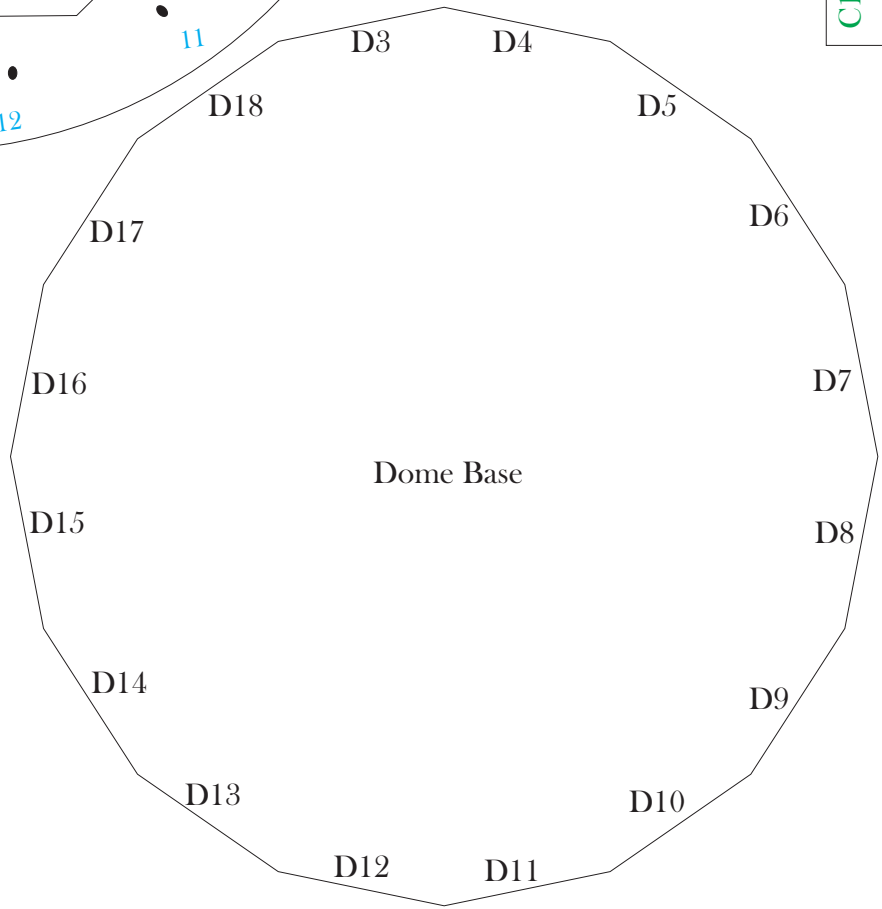
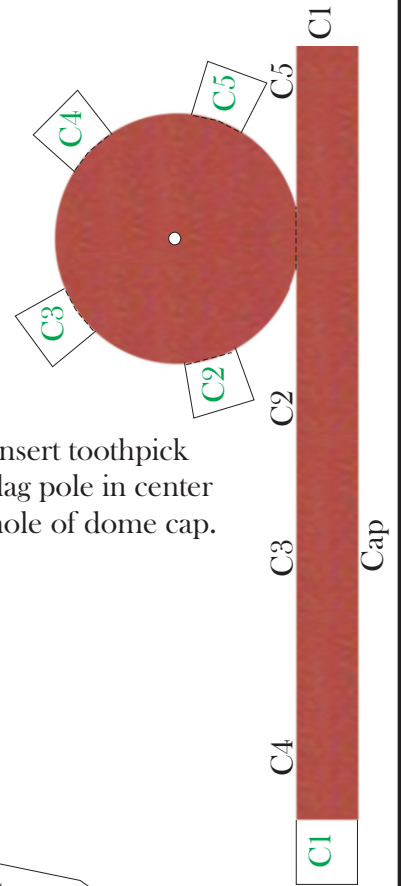
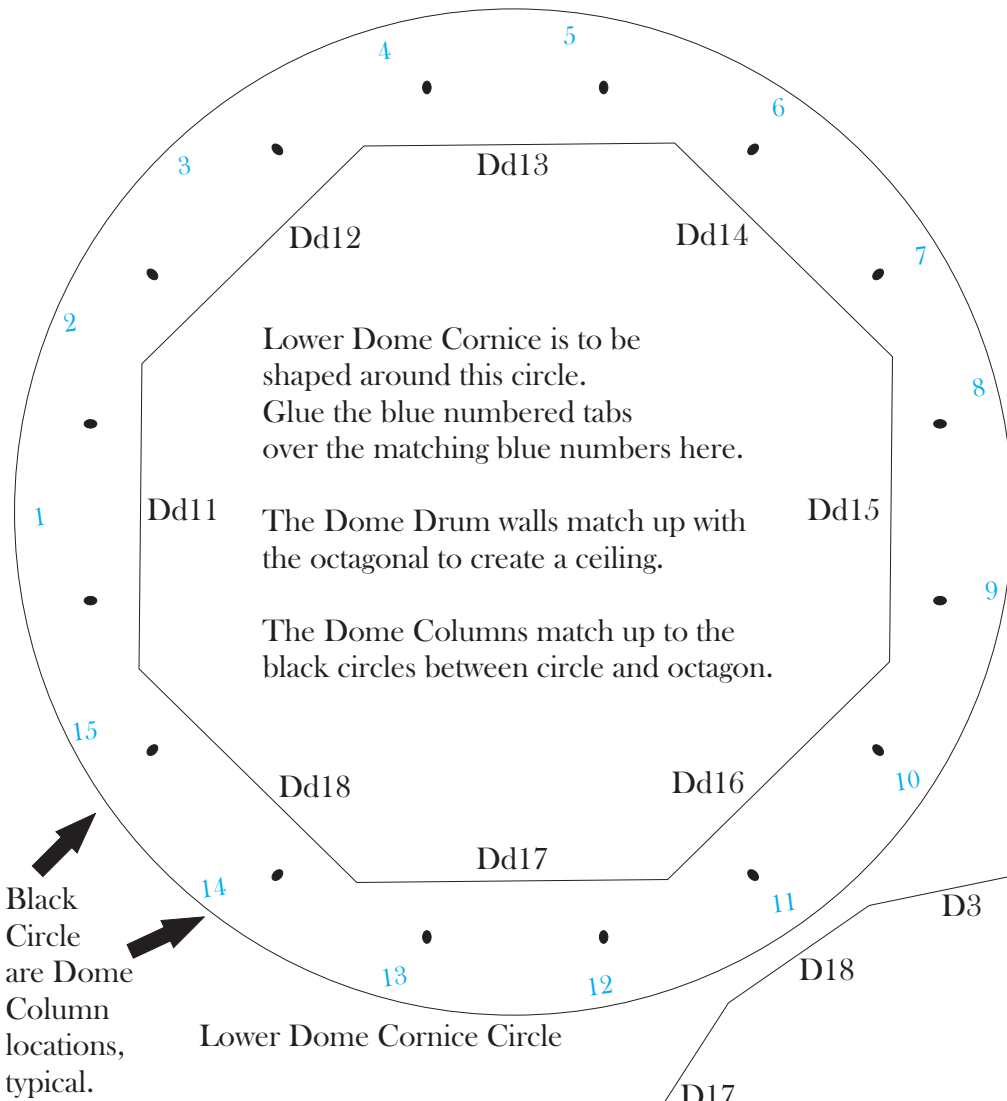
Upper Dome Cornice Circle

To Assemble remaining pieces:

1. Cut out the sixteen Dome Columns. Fold all dotted lines.
2. Glue each Dome Column to itself to create hollow tubes. Glue each column in place around the Dome Drum walls as indicated by white and black circles.
3. Cut out the Cap and Flag. Fold all dotted lines.
4. Glue the Cap together with tabs C1 - C5. Glue to top of Dome.
5. Glue the Flag around a toothpick flagpole; insert into hole in the center of the Cap.
6. Cut out the Front and Back Porch Roofs. Fold all dotted lines.
7. Fit each Roof over corresponding Porch and main Roof. Glue to Porch tabs and main Roof.
8. Insert toothpick lightening rods into 4 white circles/holes at ends of main and Porch Roofs. Glue in place



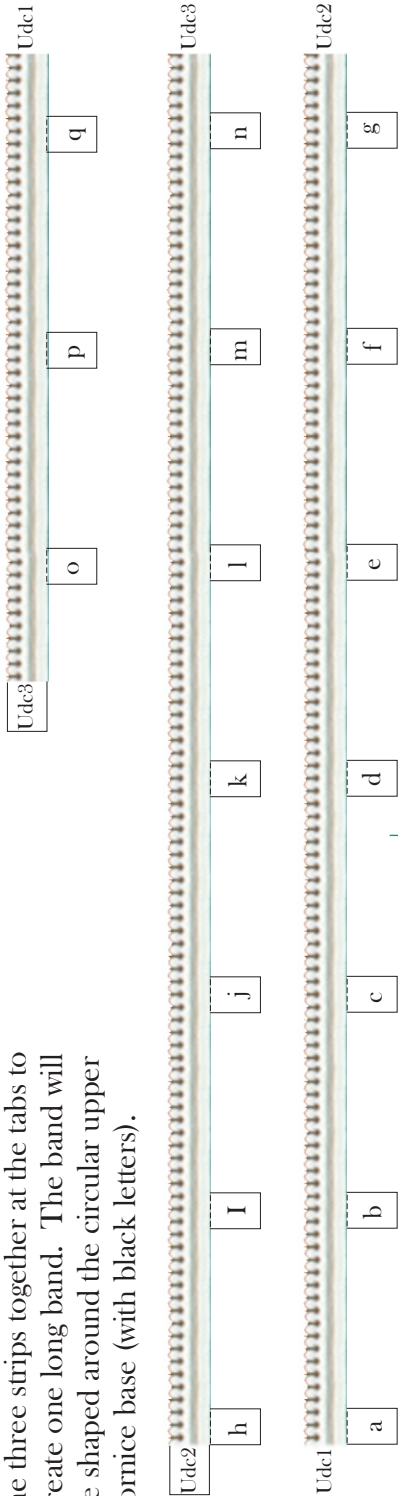
BUILD YOUR OWN LINCOLN SITES




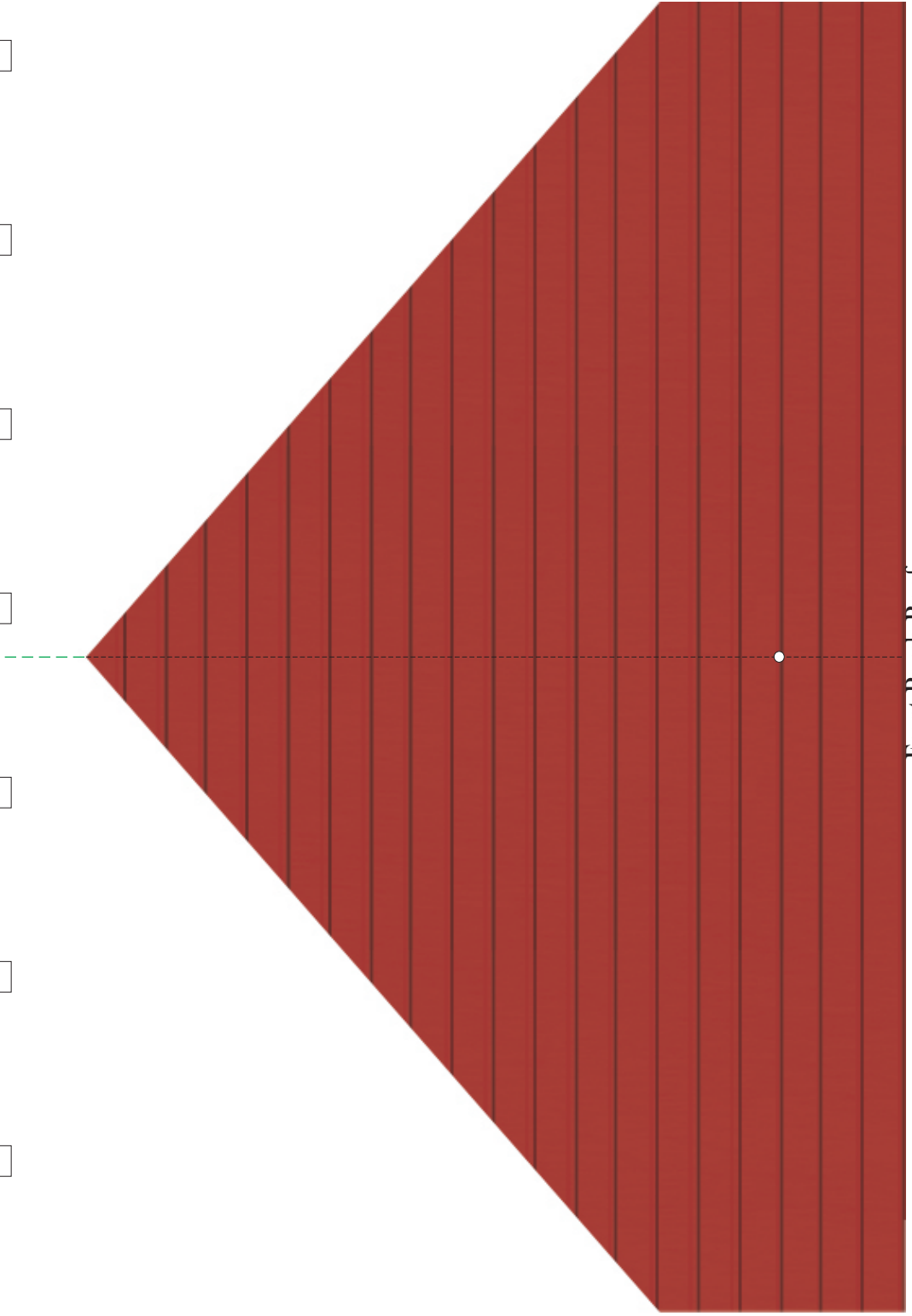
Cut out flag and glue sides together around a toothpick as flag pole. Pole will be inserted in dome's cap.

BUILD YOUR OWN LINCOLN SITES

Upper dome cornice sections. Glue the three strips together at the tabs to create one long band. The band will be shaped around the circular upper cornice base (with black letters).

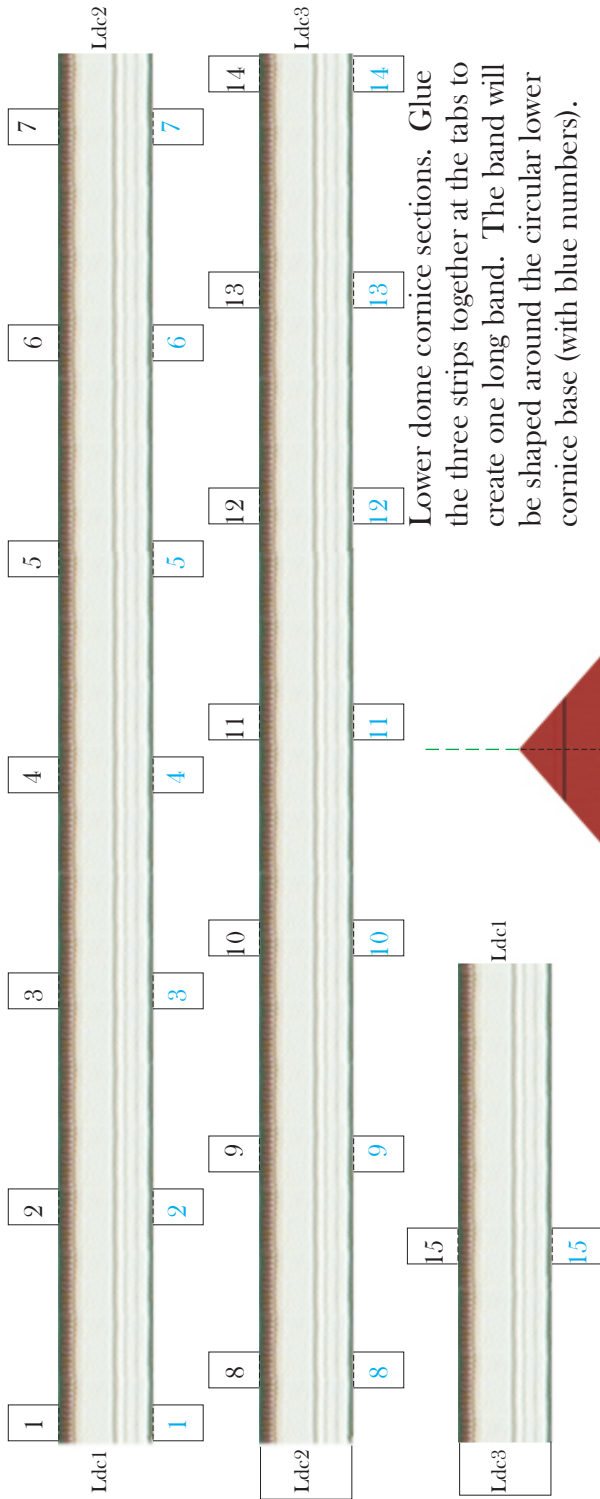


Insert toothpick into small round hole as lightning rod


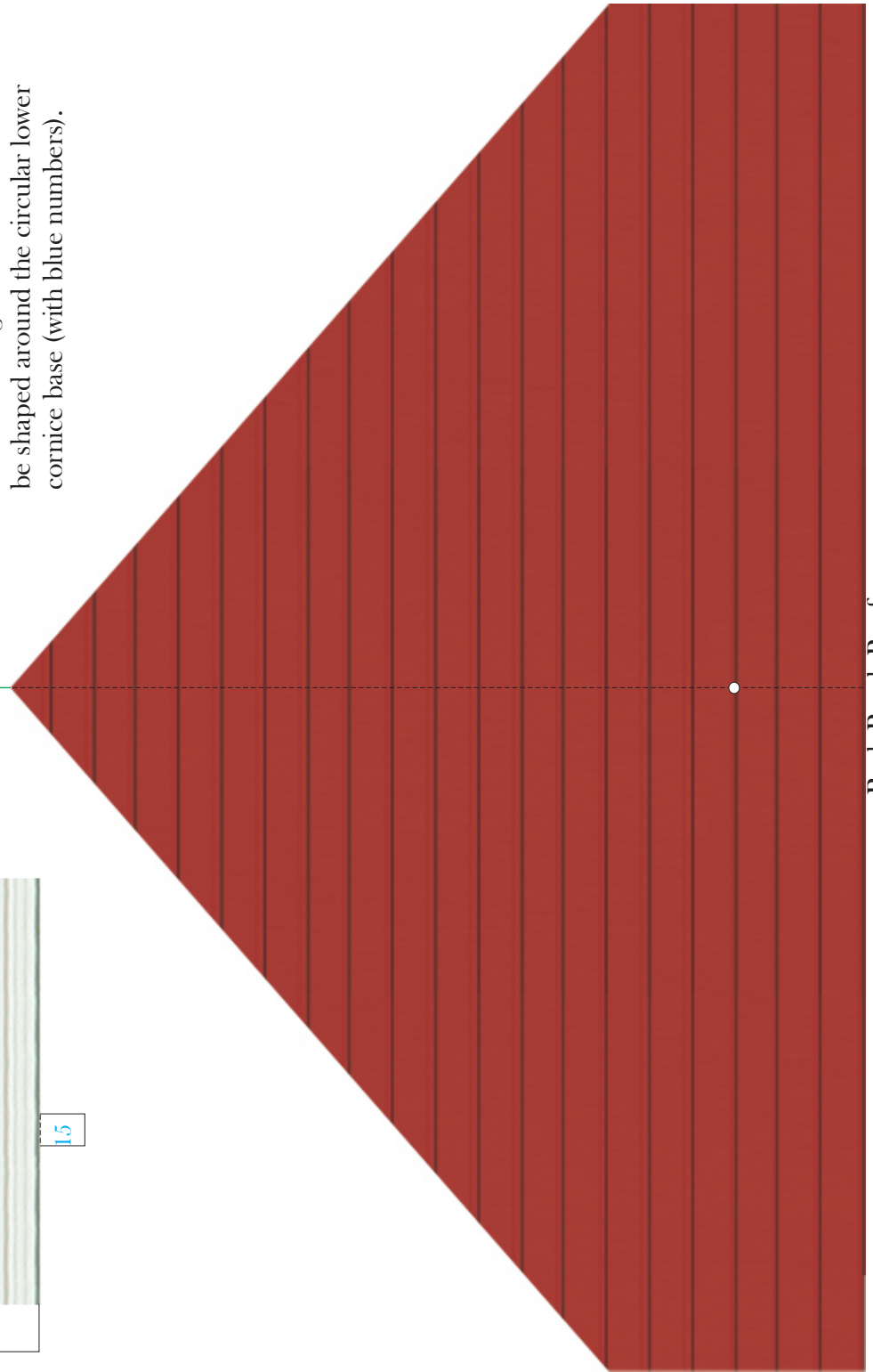


BUILD YOUR OWN LINCOLN SITES

Insert toothpick
into small round
hole as lightning rod



Lower dome cornice sections. Glue the three strips together at the tabs to create one long band. The band will be shaped around the circular lower cornice base (with blue numbers).



Back Porch Roof

BUILD YOUR OWN LINCOLN SITES