

Directions:

Image of Built Model

Basic Directions:

1. Be careful to cut around all tabs.
 2. Dotted lines are to be folded. Green dotted lines and green letters should be folded backward. Red dotted lines and red letters should be folded forward.
 3. Letters indicate how pieces should fit together.
- TIP: Lightly score dotted lines before cutting piece out to make folding easier.

To Make Recessed Entrance and Finish Front:

1. Cut out Front piece.
2. Cut out areas marked with red "X"s". Fold all dotted lines.
3. Cut out Left and Right Entries. Fold all dotted lines.
4. Glue tabs A through H to create the two recessed entries.
5. Glue tabs I through N to attach Entries to Front.
6. Cut out Left and Right Cornices. Fold all dotted lines.
7. Glue tab O over P on Left Cornice.
8. Glue tab Q over R on Right Cornice.
9. Fold in the ends of each Cornice.
10. Attach each Cornice over its image on the Front (At O and Q)

BUILD YOUR OWN ILLINOIS MAIN STREET



ILLINOIS MAIN STREET

ILLINOIS HISTORIC PRESERVATION AGENCY
 One Old State Capitol Plaza Springfield, Illinois 62701 217.782.4836
 OFFICE OF LIEUTENANT GOVERNOR PAT QUINN
www.illinois-history.gov www.illinoismainstreet.org

WILL HALL BUILDING
 ALEDO, IL

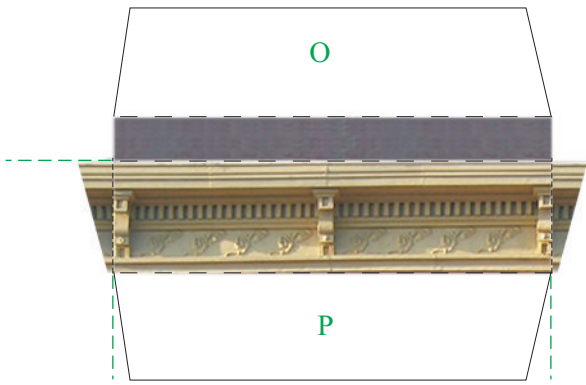
www.buildyourownmainstreet.com

Drawn By
 Michael
 Goebel-Bain

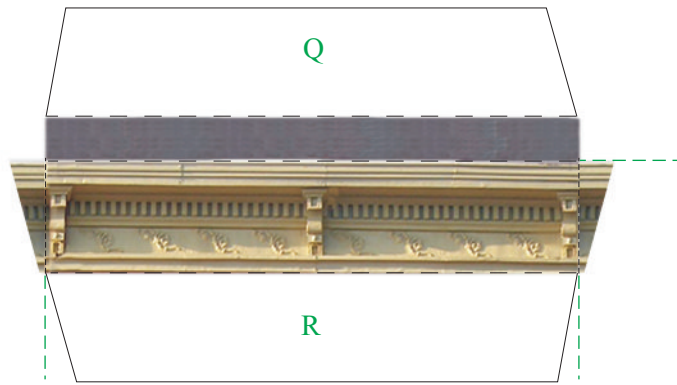
Date
 6/07

PAGE

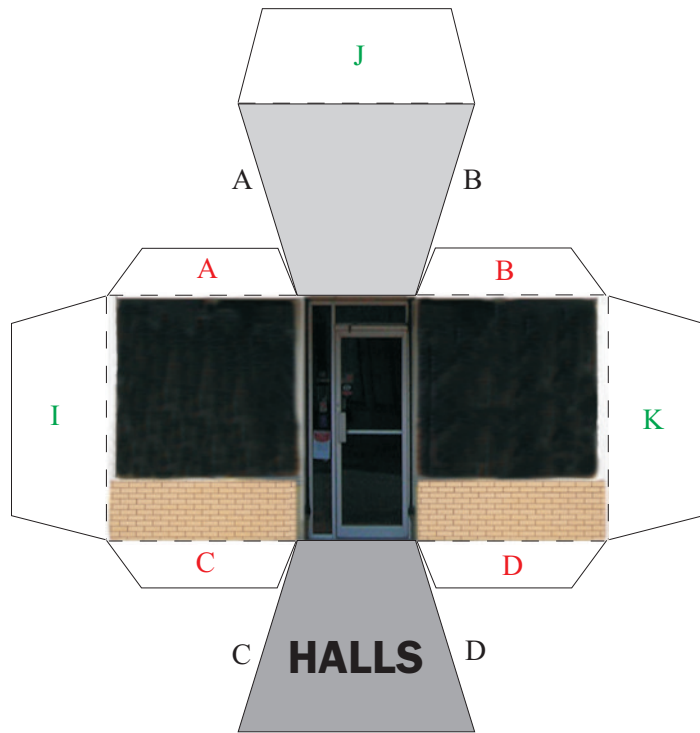
1 of 5



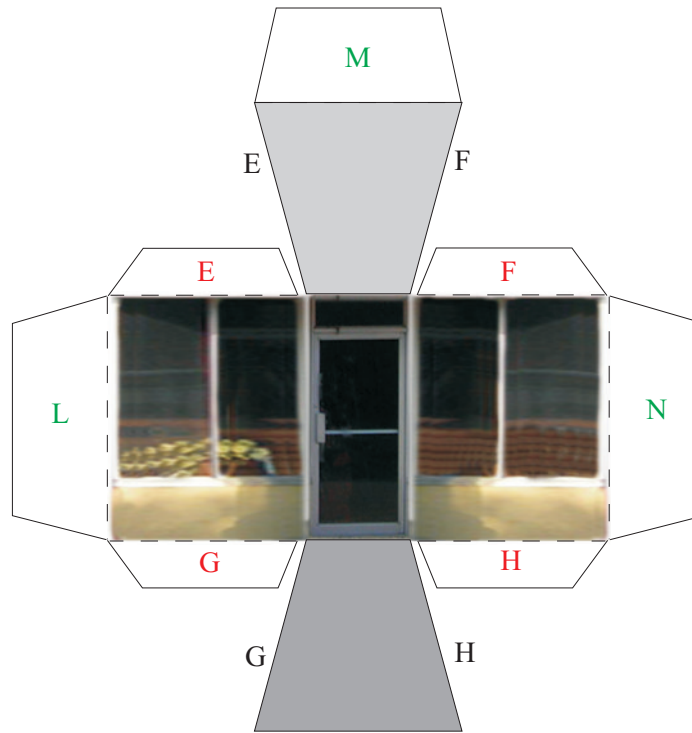
Left Cornice



Right Cornice



Left Entry



Right Entry

BUILD YOUR OWN ILLINOIS MAIN STREET



ILLINOIS MAIN STREET

ILLINOIS HISTORIC PRESERVATION AGENCY
 One Old State Capitol Plaza Springfield, Illinois 62701 217.782.4836
 OFFICE OF LIEUTENANT GOVERNOR PAT QUINN
www.illinois-history.gov www.illinoismainstreet.org

WILL HALL BUILDING

ALEDO, IL

www.buildyourownmainstreet.com

Drawn By
 Michael
 Goebel-Bain

Date
 6/07

To Attach Sides and Rear to Front:

1. Cut out Sides and Rear.
2. Fold all dotted lines.
3. Glue tabs S, T, U, and V to create the rectangular building.
4. Glue tabs GG, HH, II, and JJ together to create a base.



BUILD YOUR OWN ILLINOIS MAIN STREET



ILLINOIS MAIN STREET

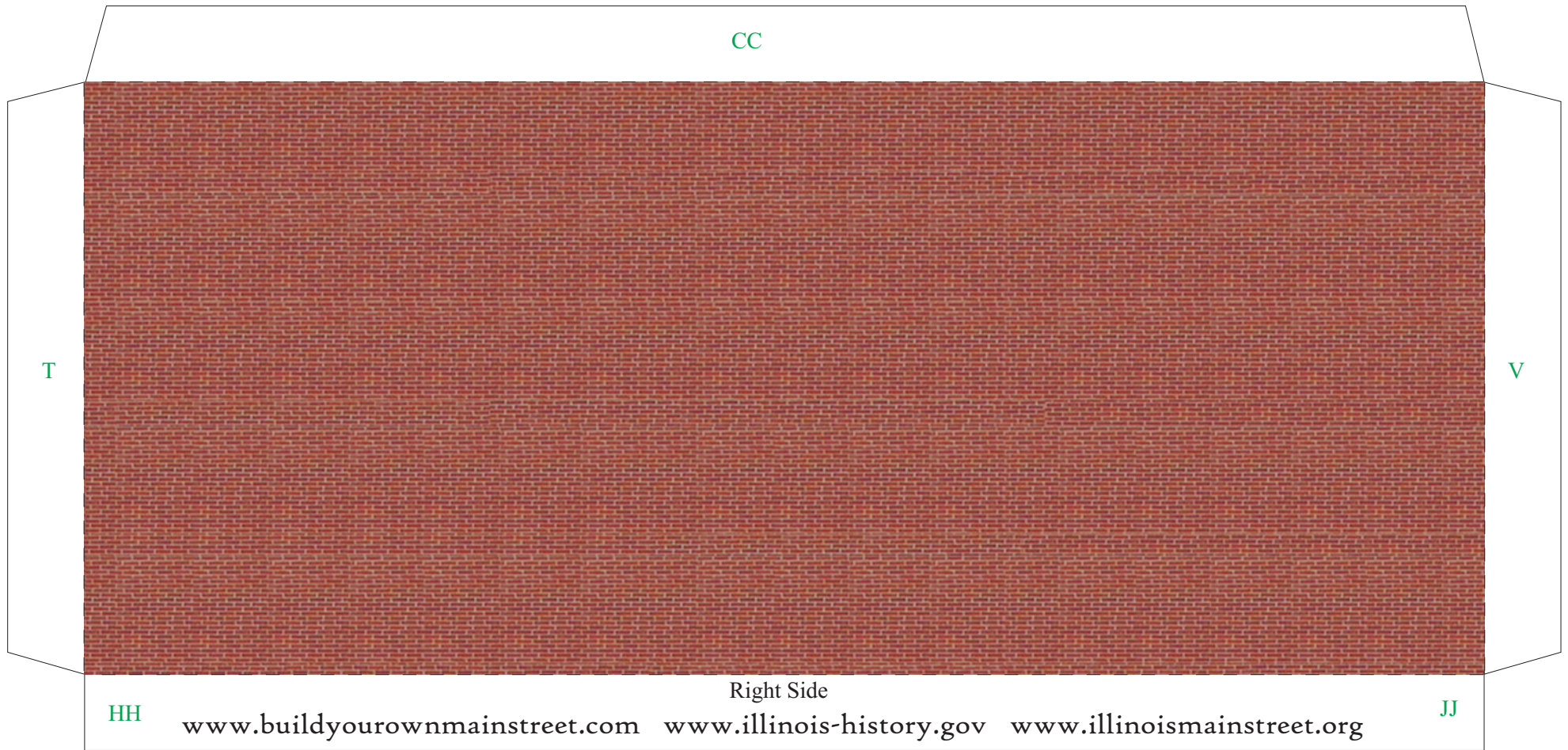
ILLINOIS HISTORIC PRESERVATION AGENCY
One Old State Capitol Plaza Springfield, Illinois 62701 217.782.4836
OFFICE OF LIEUTENANT GOVERNOR PAT QUINN
www.illinois-history.gov www.illinoismainstreet.org

WILL HALL BUILDING
ALEDO, IL
www.buildyourownmainstreet.com

Drawn By
Michael
Goebel-Bain

Date
6/07

PAGE
2 of 5



BUILD YOUR OWN ILLINOIS MAIN STREET



ILLINOIS MAIN STREET

ILLINOIS HISTORIC PRESERVATION AGENCY
 One Old State Capitol Plaza Springfield, Illinois 62701 217.782.4836
 OFFICE OF LIEUTENANT GOVERNOR PAT QUINN
www.illinois-history.gov www.illinoismainstreet.org

WILL HALL BUILDING
 ALEDO, IL
www.buildyourownmainstreet.com

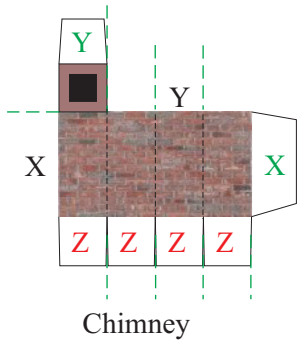
Drawn By
 Michael
 Goebel-Bain

Date
 6/07

PAGE
 3 of 5

To Install Chimney and Add the Roof:

1. Cut out Chimney piece and fold all dotted lines.
2. Glue tab X to the other side of the chimney to make a square tube.
3. Glue tab Y down to enclose the top of the chimney.
4. Cut out the section of the Roof marked with a red "X".
5. Cut out the Roof piece. Fold all dotted lines.
6. Push Chimney through the square hole in the Roof.
7. Glue tabs Z to the back of the Roof to attach chimney.
8. Glue tabs AA and BB to the back of the Front.
9. Glue tabs EE and FF on the Rear to the Roof's underside.
10. Glue tabs CC and DD on the Sides to the Roof's underside.
11. Roof will slope slightly to the Right and Left from the center.



BUILD YOUR OWN ILLINOIS MAIN STREET



ILLINOIS MAIN STREET

ILLINOIS HISTORIC PRESERVATION AGENCY
 One Old State Capitol Plaza Springfield, Illinois 62701 217.782.4836
 OFFICE OF LIEUTENANT GOVERNOR PAT QUINN
www.illinois-history.gov www.illinoismainstreet.org

WILL HALL BUILDING
 ALEDO, IL
www.buildyourownmainstreet.com

Drawn By
 Michael
 Goebel-Bain

Date
 6/07

PAGE
 4 of 5

CC

EE

BB



FF

AA

DD

Roof

BUILD YOUR OWN ILLINOIS MAIN STREET



ILLINOIS MAIN STREET

ILLINOIS HISTORIC PRESERVATION AGENCY
One Old State Capitol Plaza Springfield, Illinois 62701 217.782.4836
OFFICE OF LIEUTENANT GOVERNOR PAT QUINN
www.illinois-history.gov www.illinoismainstreet.org

WILL HALL BUILDING
ALEDO, IL
www.buildyourownmainstreet.com

Drawn By
Michael
Goebel-Bain

Date
6/07

PAGE
5 of 5