

Upper Cornice

Directions:

Basic Directions:

1. Be careful to cut around all tabs.
 2. Dotted lines are to be folded. Green dotted lines and green letters should be folded backward. Red dotted lines and red letters should be folded forward.
 3. Letters indicate how pieces should fit together.
- TIP: Lightly score dotted lines before cutting piece out to make folding easier.

To Make Recessed Entrance and Finish Front:

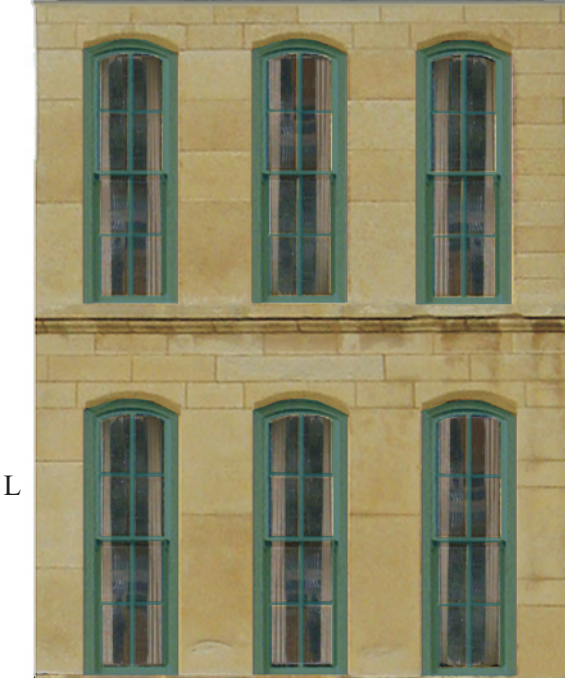
1. Cut out Entry piece.
2. Cut out area marked with red "X".
3. Fold all dotted lines.
4. Glue tabs A, B, C and D to create recessed entry.
5. Entry ceiling will be curve to match arches at doorways.
6. Cut out Front Piece. Fold all dotted lines.
7. Glue tabs E, F, and G on Entry to back side of Front.

To Add Upper and Storefront Cornices

1. Cut out both Cornice pieces and fold all dotted lines.
2. Glue Upper Cornice tabs H and I together to form a square tube.
3. Glue the Upper Cornice onto the Front at location indicated. The blank tabs will glue to the sides.
4. Glue Storefront Cornice tab J and area indicated K onto the Front at location indicated. See Image of Installed Storefront Cornice to right below.

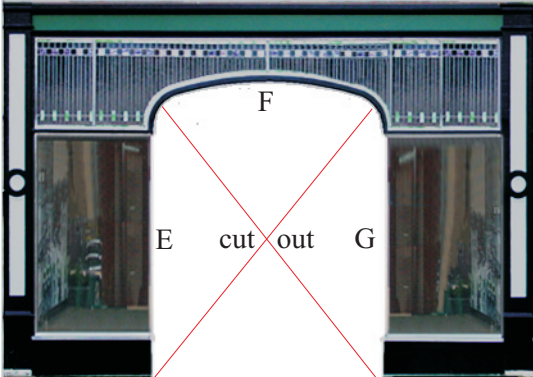


View of complete model

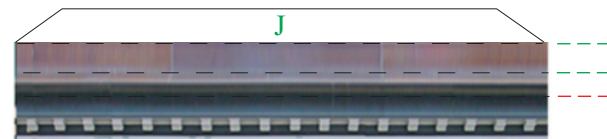


L

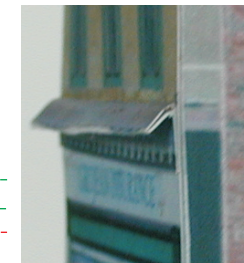
O



Front



Storefront Cornice



Appearance of Storefront Cornice Installed

BUILD YOUR OWN ILLINOIS MAIN STREET

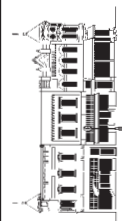
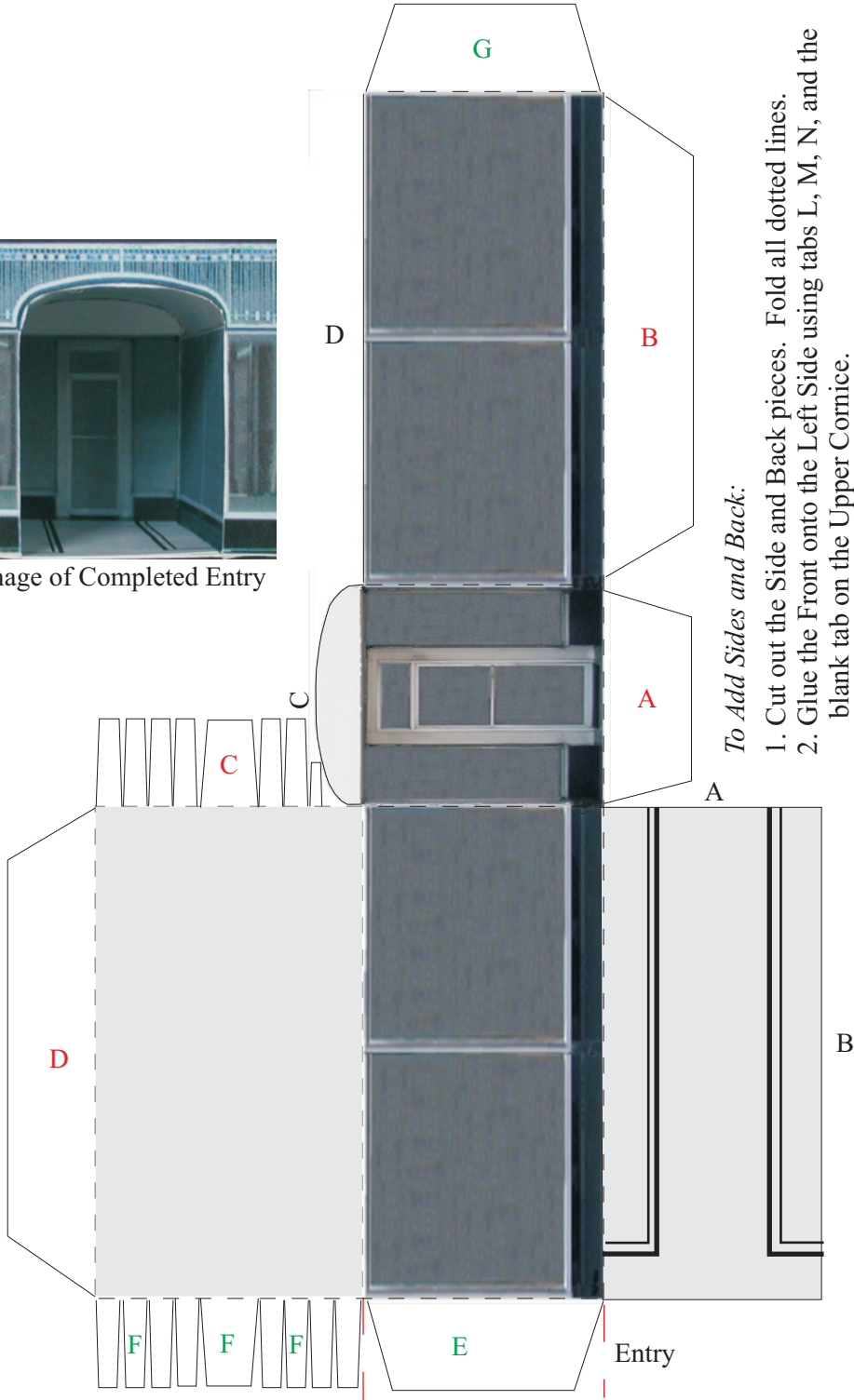


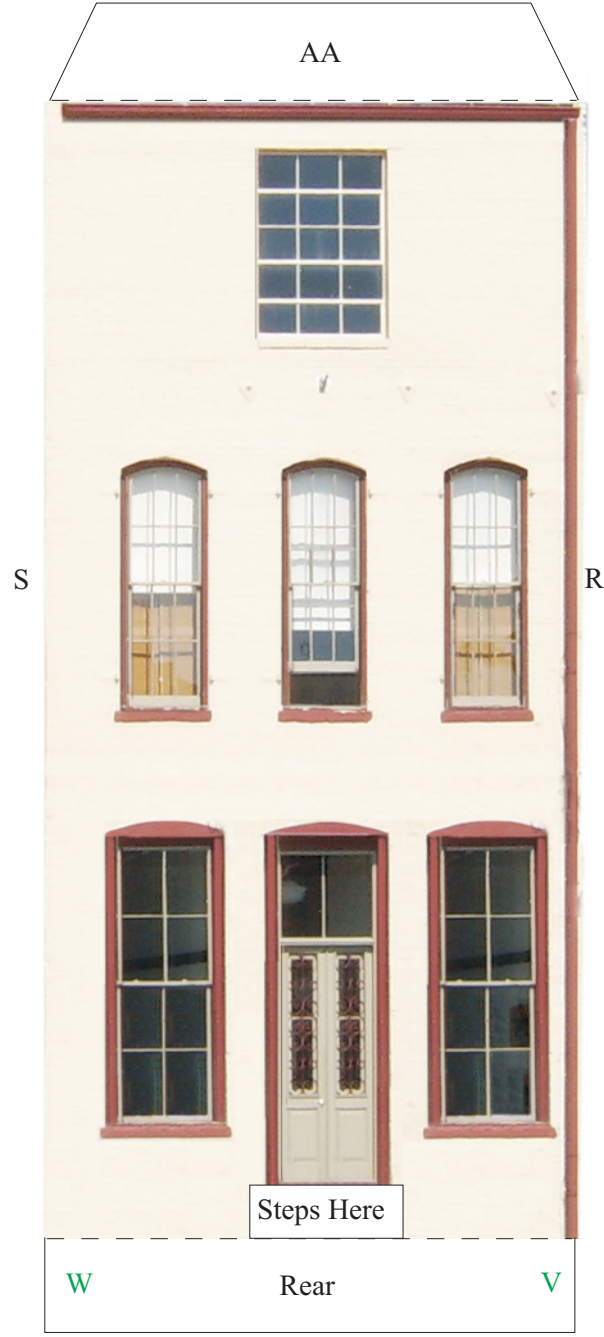


Image of Completed Entry

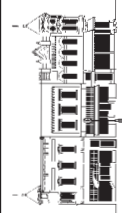


To Add Sides and Back:

1. Cut out the Side and Back pieces. Fold all dotted lines.
2. Glue the Front onto the Left Side using tabs L, M, N, and the blank tab on the Upper Cornice.
3. Glue the Front onto the Right Side using tabs O, P, Q, and the blank tab on the Upper Cornice.
4. Glue the Back onto the sides using tabs R and S.
5. Glue the corners of all bottom tabs (T, U, V, W) to create a base.



BUILD YOUR OWN ILLINOIS MAIN STREET



ILLINOIS MAIN STREET
ILLINOIS HISTORIC PRESERVATION AGENCY
1 Old State Capitol Plaza Springfield, IL 62701 217-782-4836
OFFICE OF LIEUTENANT GOVERNOR PAT QUINN
www.illinois-history.gov www.illinoismainstreet.org

GROJEAN BUILDING
25 S. SQUARE, JACKSONVILLE, IL
www.buildyourownmainstreet.com

Drawn By
Michael
Goebel-Bain
Date
4/07
PAGE
2 of 5

Fold

cut

cut

cut

cut

cut

cut

Z

M

R

L

V

© 2007 ILLINOIS HISTORIC PRESERVATION AGENCY

Left Side

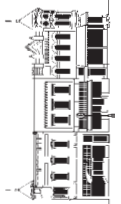
T

ELI
BRIDGE
COMPANY



The **BIG ELI**
OVER A CENTURY
OF GREAT FUN!

BUILD YOUR OWN ILLINOIS MAIN STREET



ILLINOIS MAIN STREET
ILLINOIS HISTORIC PRESERVATION AGENCY
1 Old State Capitol Plaza Springfield, IL 62701 217-782-4836
OFFICE OF LIEUTENANT GOVERNOR PAT QUINN
www.illinois-history.gov www.illinoismainstreet.org

GROJEAN BUILDING
25 S. SQUARE, JACKSONVILLE, IL
www.buildyourownmainstreet.com

Drawn By
Michael
Goebel-Bain
Date
4/07

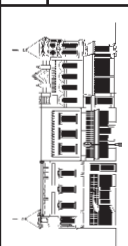
PAGE
3 of 5



Drawn By
Michael
Goebel-Bain
Date
4/07

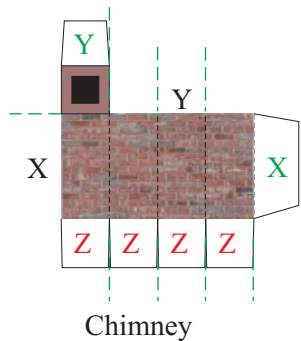
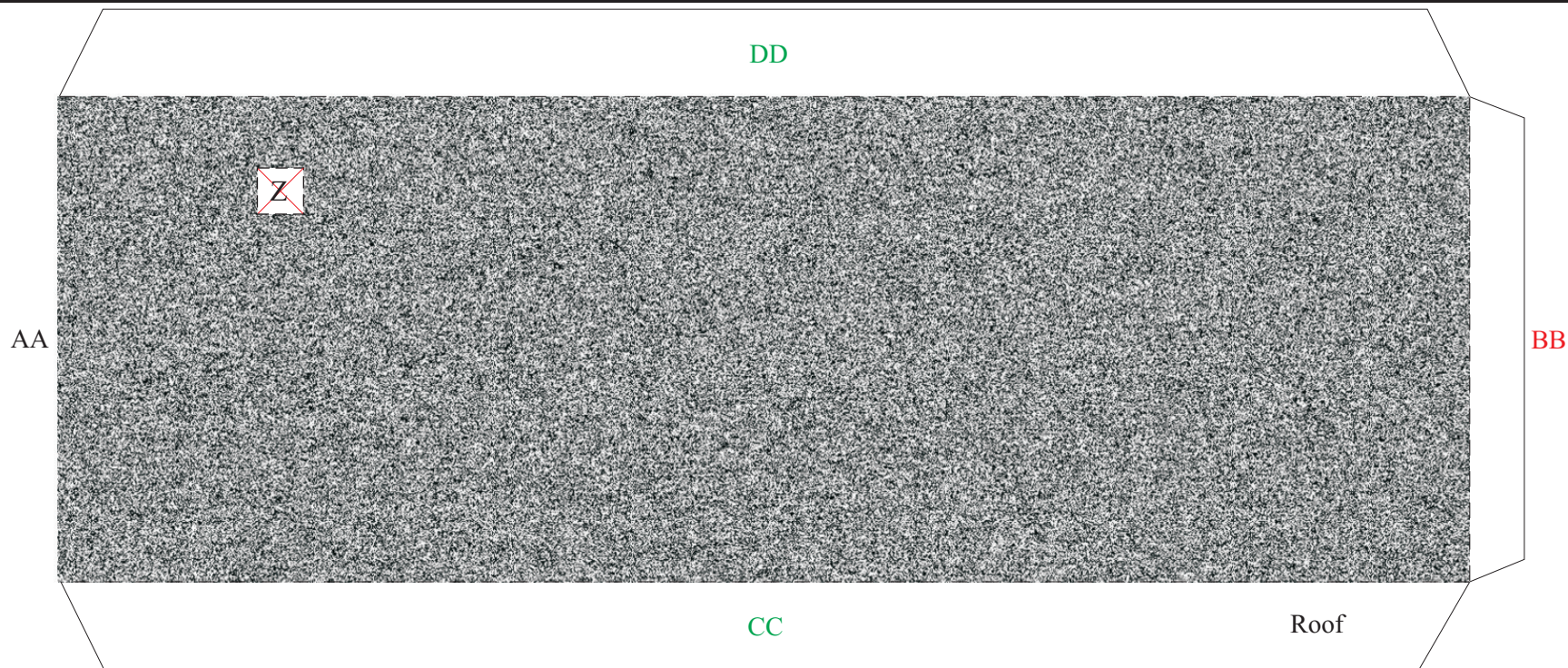
GROJEAN BUILDING
25 S. SQUARE, JACKSONVILLE, IL
www.buildyourownmainstreet.com

ILLINOIS MAIN STREET
ILLINOIS HISTORIC PRESERVATION AGENCY
1 Old State Capitol Plaza Springfield, IL 62701 217-782-4836
OFFICE OF LIEUTENANT GOVERNOR PAT QUINN
www.illinois-history.gov www.illinoismainstreet.org



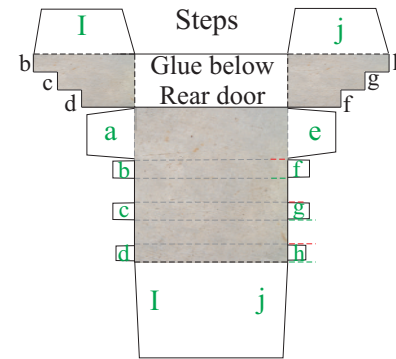
BUILD YOUR OWN ILLINOIS MAIN STREET

U Right Side W
www.buildyourownmainstreet.com www.illinois-history.gov www.illinoismainstreet.org



To Install Chimney and Add the Roof:

1. Cut out Chimney piece and fold all dotted lines.
2. Glue tab X to the other side of the chimney to make a square tube.
3. Glue tab Y down to enclose the top of the chimney.
4. Cut out the two sections of the Roof marked with red X's.
5. Cut out the Roof piece. Fold all dotted lines.
6. Push Chimney through the square hole in the Roof.
7. Glue tabs Z to the back of the Roof to attach chimney.
8. Glue tab AA on the Back to the Roof's underside.
9. Glue tab BB to the back of the Front. It will fit tight under the folded back parapet.
10. Glue tabs CC and DD to the back of the Sides.
11. Roof will be slightly sloped.



To Install Steps:

1. Cut out Steps piece and fold all dotted lines.
2. Glue tabs a and e to the step sides to create the landing.
3. Glue tabs b, c, d, f, g, and h to the step risers.
4. Glue the small tabs i and j to the larger tab i/j.
5. Glue back of Steps to area indicated on Rear of model.

