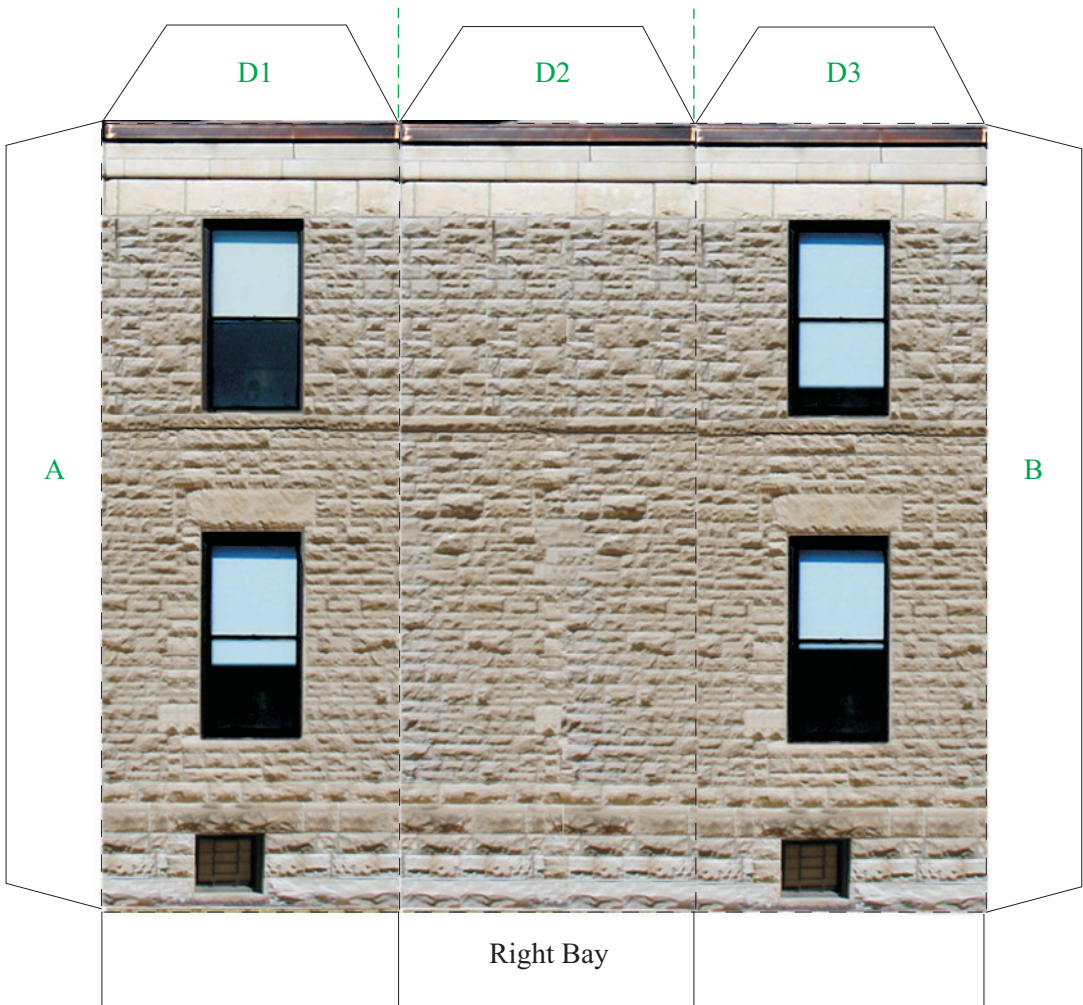


Directions:

Basic Directions:

1. Be careful to cut around all tabs.
 2. Dotted lines are to be folded. Green dotted lines and green letters should be folded backward. Red dotted lines and red letters should be folded forward.
 3. Letters indicate how pieces should fit together.
- TIP: Lightly score dotted lines before cutting piece out to make folding easier.



BUILD YOUR OWN ILLINOIS MAIN STREET



ILLINOIS MAIN STREET

ILLINOIS HISTORIC PRESERVATION AGENCY
 One Old State Capitol Plaza Springfield, Illinois 62701 217.782.4836
 OFFICE OF LIEUTENANT GOVERNOR PAT QUINN
www.illinois-history.gov www.illinoismainstreet.org

GARDNER MUSEUM
 QUINCY, IL
www.buildyourownmainstreet.com

Drawn By
 Michael
 Goebel-Bain
 Date
 6/07

PAGE
 1 of 10



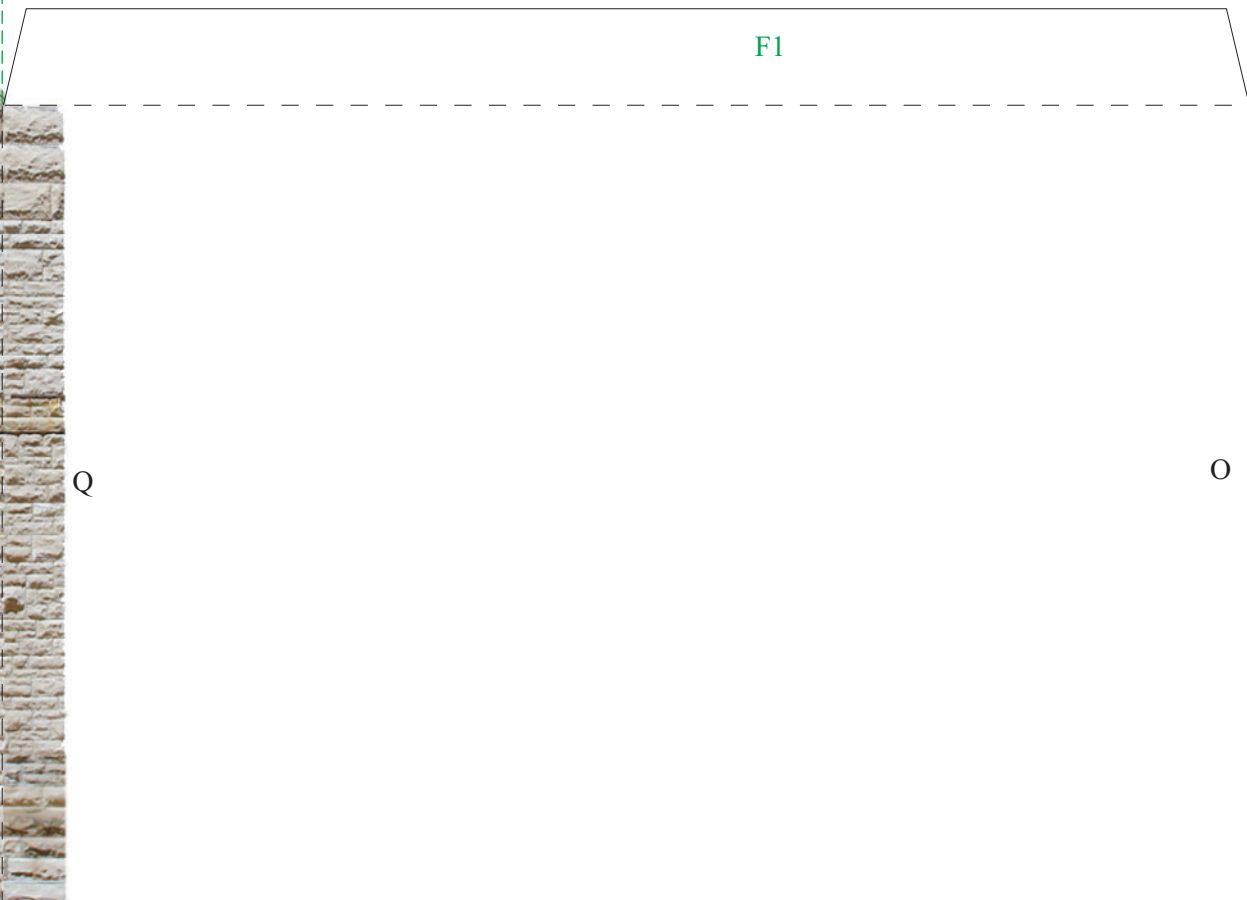
E1

E2

C

Q

O A



F1

www.illinois-history.gov
Left Gable

www.buildyourownmainstreet.com www.illinoismainstreet.org
Hidden Wall (Front)

BUILD YOUR OWN ILLINOIS MAIN STREET



ILLINOIS MAIN STREET

ILLINOIS HISTORIC PRESERVATION AGENCY
One Old State Capitol Plaza Springfield, Illinois 62701 217.782.4836
OFFICE OF LIEUTENANT GOVERNOR PAT QUINN
www.illinois-history.gov www.illinoismainstreet.org

GARDNER MUSEUM
QUINCY, IL
www.buildyourownmainstreet.com

Drawn By
Michael
Goebel-Bain

Date
6/07

PAGE
2 of 10

To create main block of building and add roof:

1. Cut out Right Bay, Left Gable/ Hidden Wall, and Rear Wall pieces and fold all dotted lines.
2. Glue corresponding tabs A, B, and C to create walls.
3. Cut out Main Roof and fold all dotted lines.
4. Glue tab G to create the roof over the Right Bay.
5. Glue roof to main block using tabs E1, E2, F1, F2, D1, D2, and D3.
6. Glue corners of bottom tabs together to create a base.



BUILD YOUR OWN ILLINOIS MAIN STREET



ILLINOIS MAIN STREET

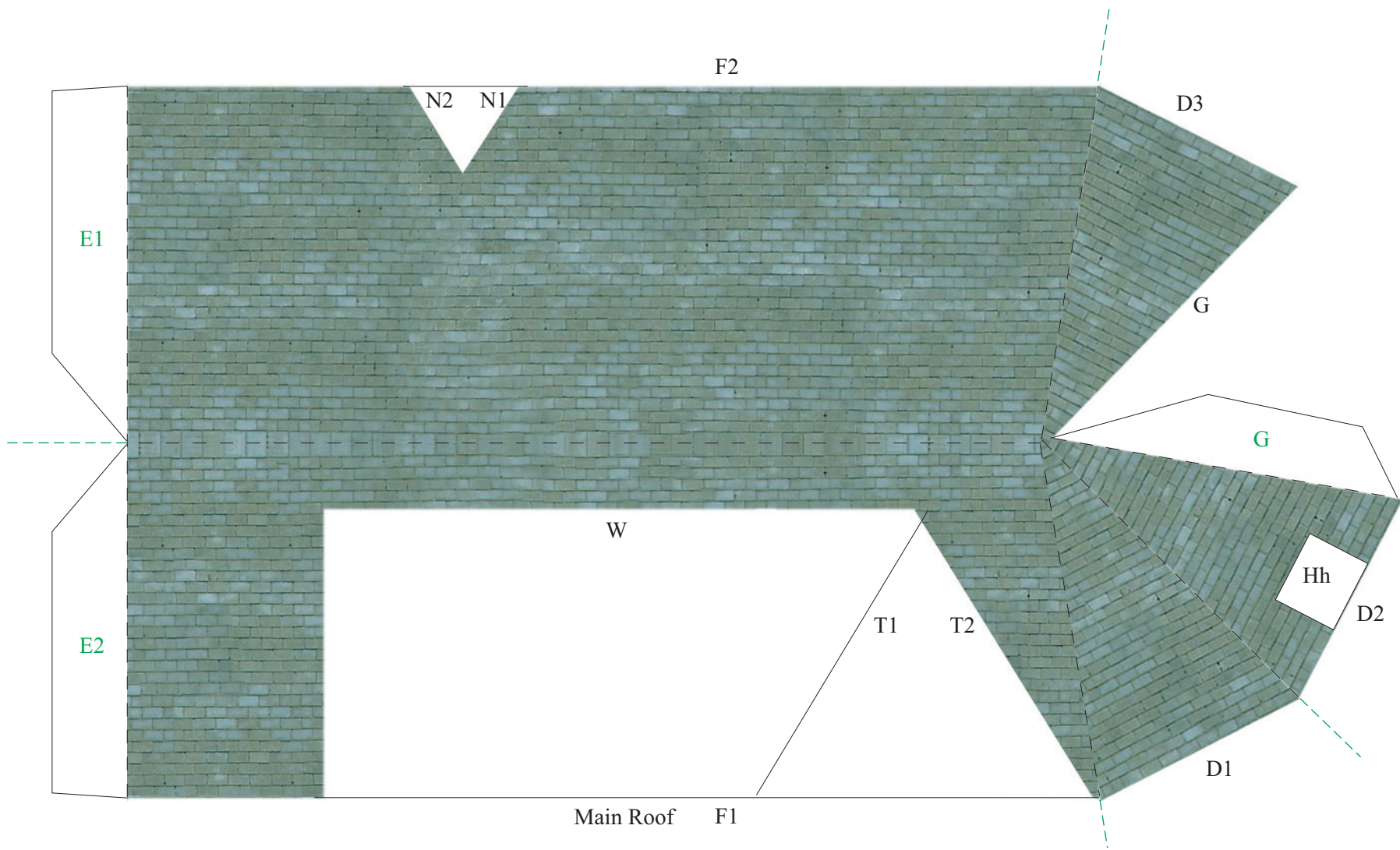
ILLINOIS HISTORIC PRESERVATION AGENCY
One Old State Capitol Plaza Springfield, Illinois 62701 217.782.4836
OFFICE OF LIEUTENANT GOVERNOR PAT QUINN
www.illinois-history.gov www.illinoismainstreet.org

GARDNER MUSEUM
QUINCY, IL
www.buildyourownmainstreet.com

Drawn By
Michael
Goebel-Bain

Date
6/07

PAGE
3 of 10



BUILD YOUR OWN ILLINOIS MAIN STREET



ILLINOIS MAIN STREET

ILLINOIS HISTORIC PRESERVATION AGENCY
 One Old State Capitol Plaza Springfield, Illinois 62701 217.782.4836
 OFFICE OF LIEUTENANT GOVERNOR PAT QUINN
www.illinois-history.gov www.illinoismainstreet.org

GARDNER MUSEUM
 QUINCY, IL
www.buildyourownmainstreet.com

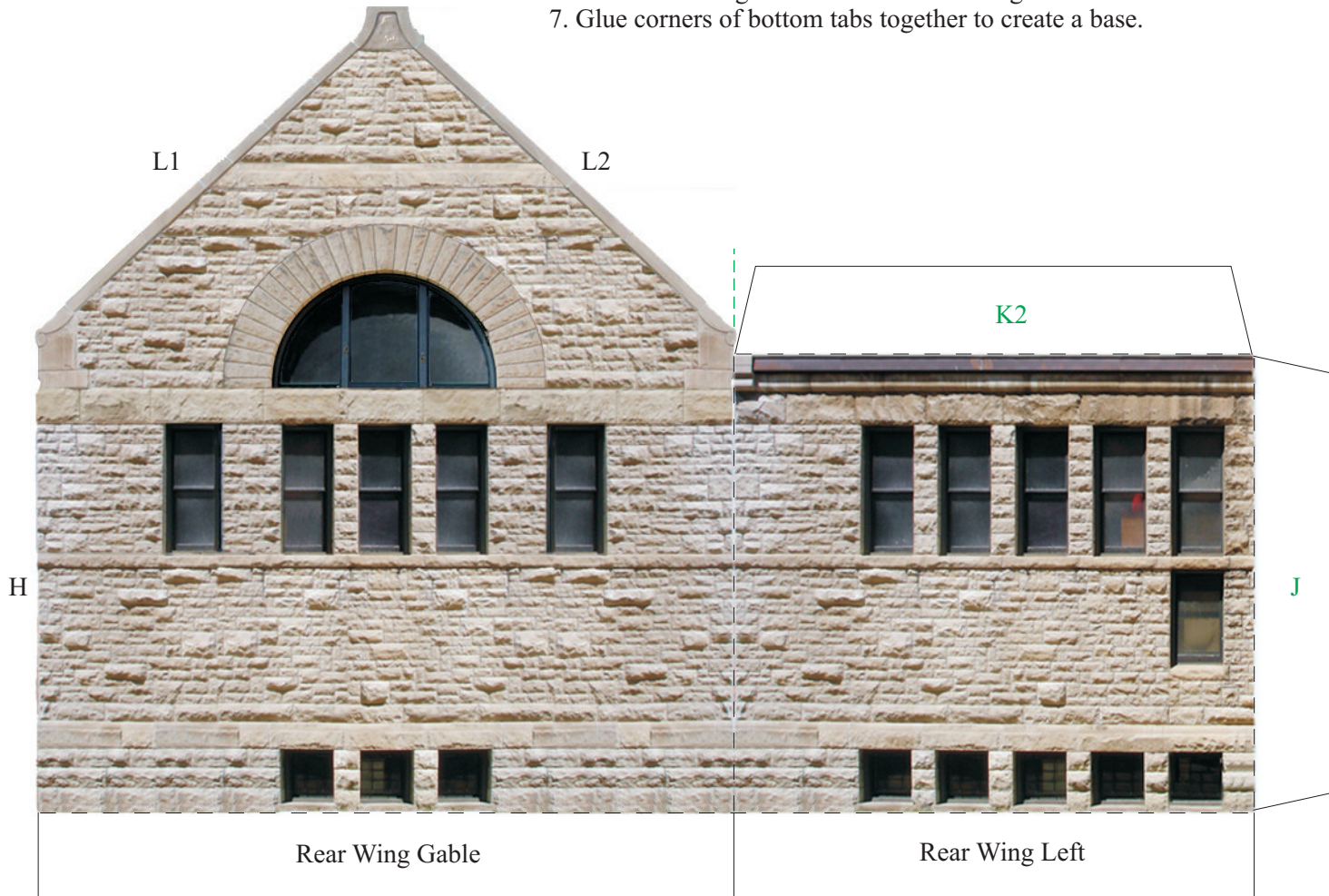
Drawn By
 Michael
 Goebel-Bain

Date
 6/07

PAGE
 4 of 10

To create Rear Wing of building and add Rear Wing Roof:

1. Cut out Rear Wing Gable/ Rear Wing Left and Rear Wing Right and fold all dotted lines.
2. Glue tab H to Rear Wing Gable.
3. Glue tabs I and J to Rear Wall of main block
4. Cut out Rear Wing Roof and fold all dotted lines.
5. Glue Rear Wing Roof to Rear Wing using tabs K1, K2, L1, L2, M1, and M2.
6. Glue Rear Wing Roof to Main Roof using tabs N1 and N2.
7. Glue corners of bottom tabs together to create a base.



BUILD YOUR OWN ILLINOIS MAIN STREET



ILLINOIS MAIN STREET

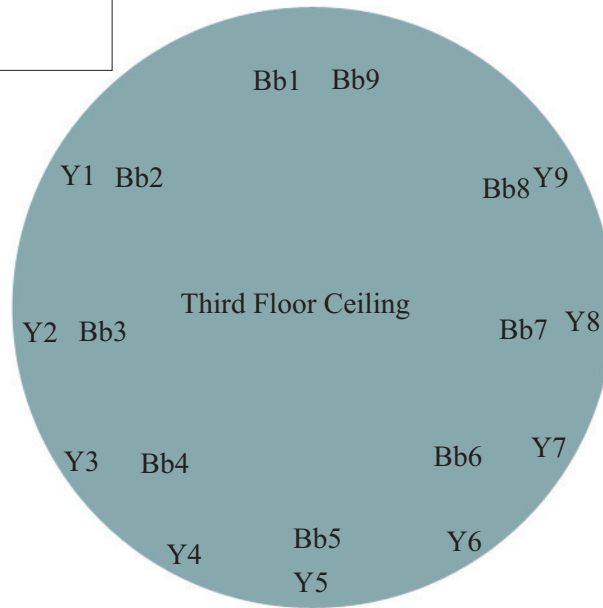
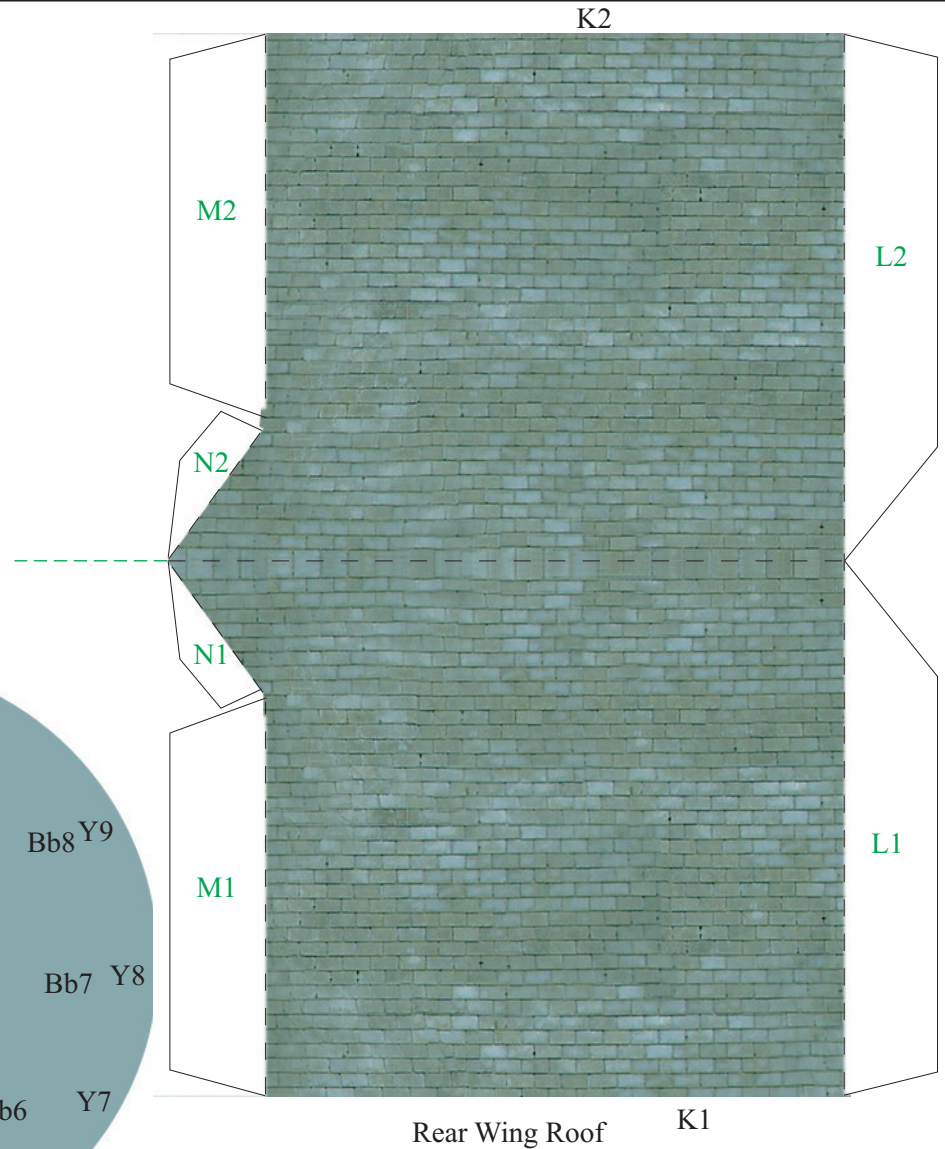
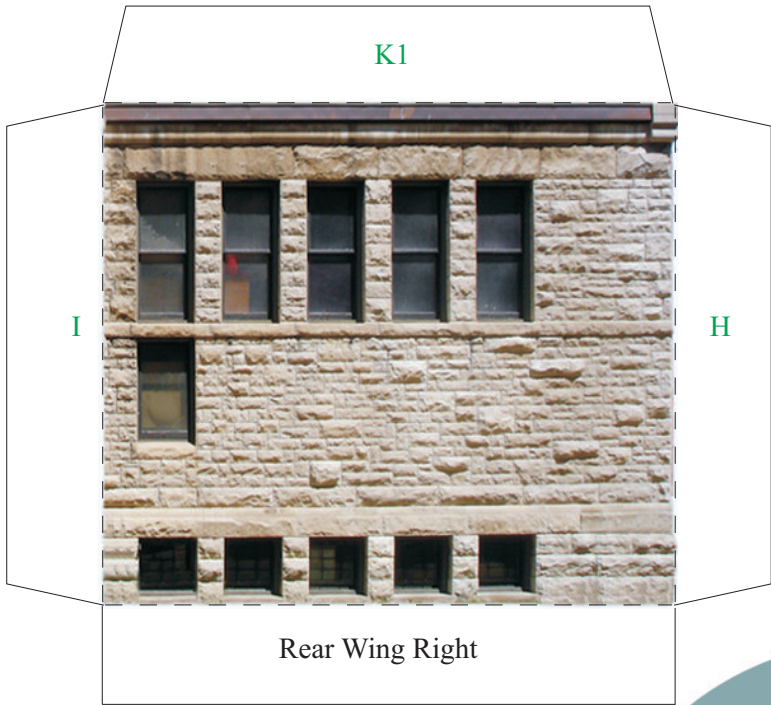
ILLINOIS HISTORIC PRESERVATION AGENCY
One Old State Capitol Plaza Springfield, Illinois 62701 217.782.4836
OFFICE OF LIEUTENANT GOVERNOR PAT QUINN
www.illinois-history.gov www.illinoismainstreet.org

GARDNER MUSEUM
QUINCY, IL
www.buildyourownmainstreet.com

Drawn By
Michael
Goebel-Bain

Date
6/07

PAGE
5 of 10



BUILD YOUR OWN ILLINOIS MAIN STREET



ILLINOIS MAIN STREET

ILLINOIS HISTORIC PRESERVATION AGENCY
 One Old State Capitol Plaza Springfield, Illinois 62701 217.782.4836
 OFFICE OF LIEUTENANT GOVERNOR PAT QUINN
www.illinois-history.gov www.illinoismainstreet.org

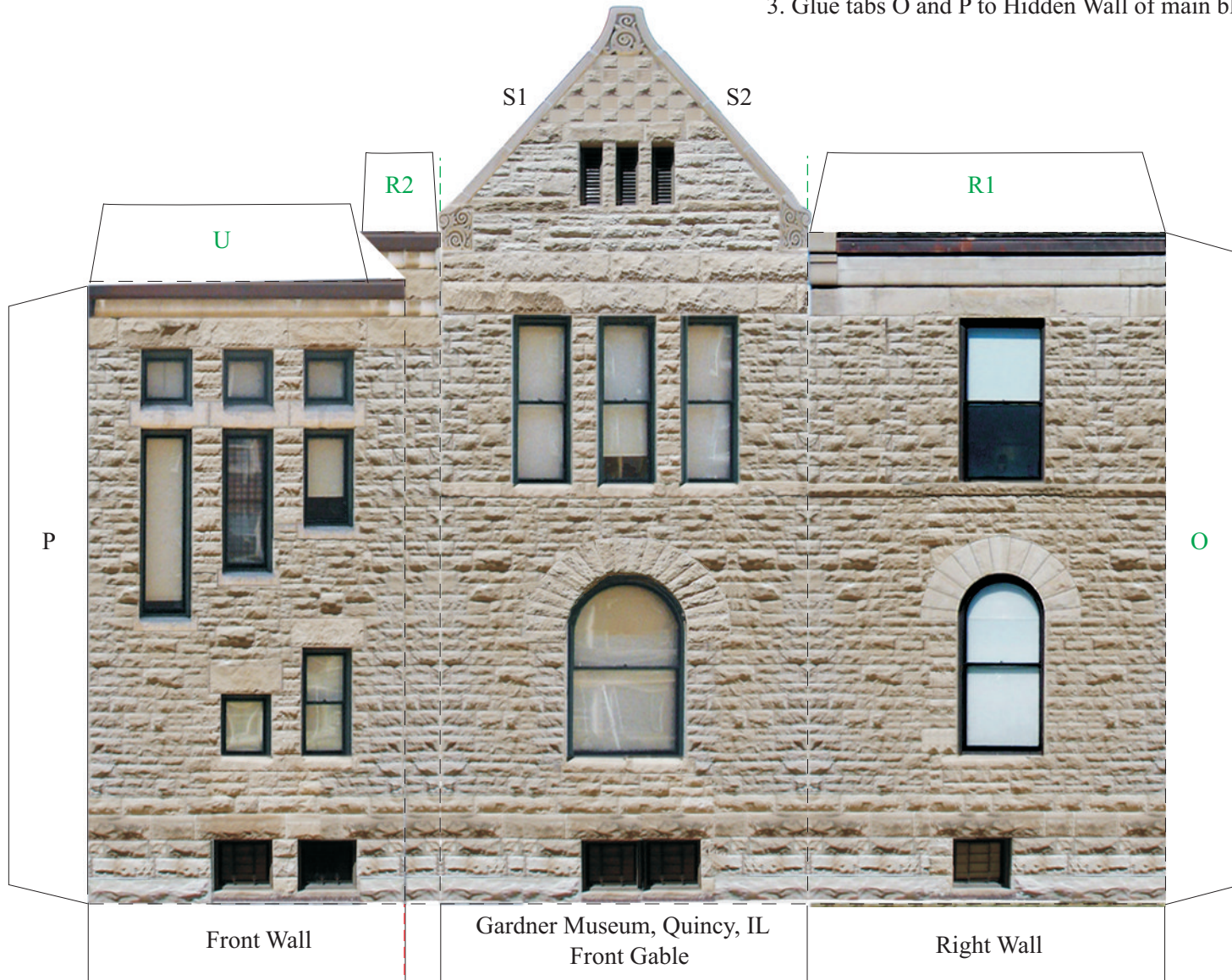
GARDNER MUSEUM
 QUINCY, IL
www.buildyourownmainstreet.com

Drawn By
 Michael
 Goebel-Bain

Date
 6/07

PAGE
 6 of 10

- To create Front Gable and Tower Entry:
1. Cut out Front Wall/ Front Gable/ Right Wall and Tower Entry. Fold all dotted lines.
 2. Glue tab P to Front Wall.
 3. Glue tabs O and P to Hidden Wall of main block



BUILD YOUR OWN ILLINOIS MAIN STREET



ILLINOIS MAIN STREET

ILLINOIS HISTORIC PRESERVATION AGENCY
 One Old State Capitol Plaza Springfield, Illinois 62701 217.782.4836
 OFFICE OF LIEUTENANT GOVERNOR PAT QUINN
www.illinois-history.gov www.illinoismainstreet.org

GARDNER MUSEUM
 QUINCY, IL
www.buildyourownmainstreet.com

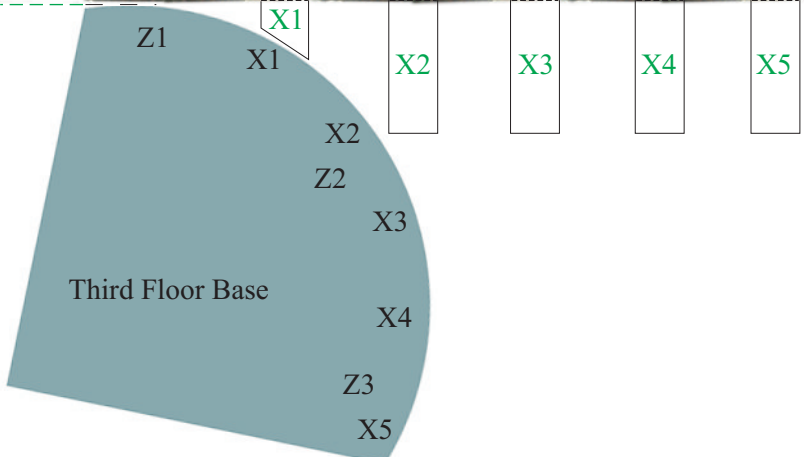
Drawn By
 Michael
 Goebel-Bain

Date
 6/07

PAGE
 7 of 10

Y1 Y2 Y3 Y4 Y5 Y6 Y7 Y8 Y9

Tower Third Floor



Third Floor Base

Z1 Z2 Z3



Tower Entry

BUILD YOUR OWN ILLINOIS MAIN STREET



ILLINOIS MAIN STREET

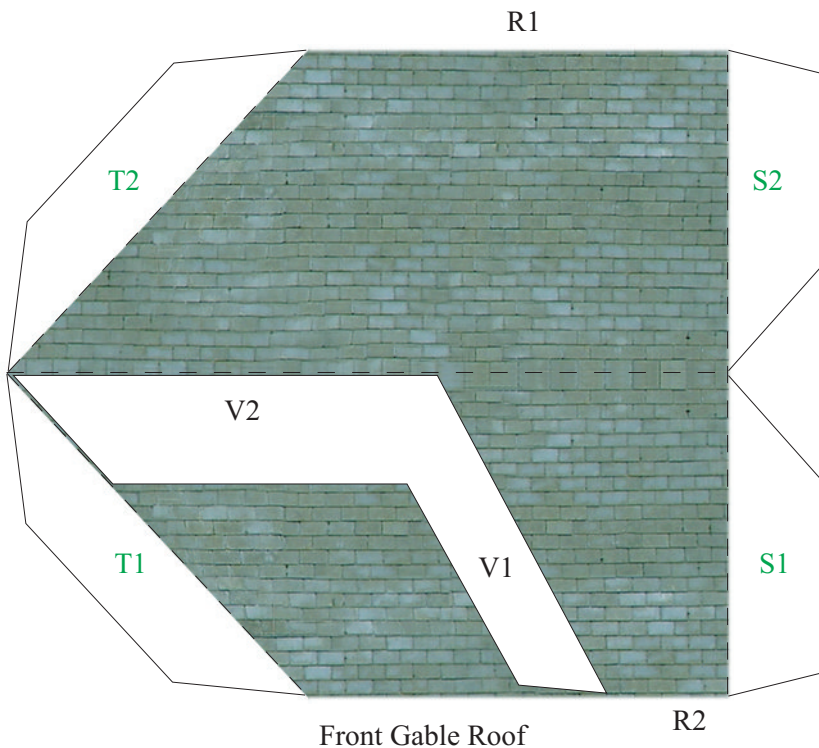
ILLINOIS HISTORIC PRESERVATION AGENCY
 One Old State Capitol Plaza Springfield, Illinois 62701 217.782.4836
 OFFICE OF LIEUTENANT GOVERNOR PAT QUINN
www.illinois-history.gov www.illinoismainstreet.org

GARDNER MUSEUM
 QUINCY, IL
www.buildyourownmainstreet.com

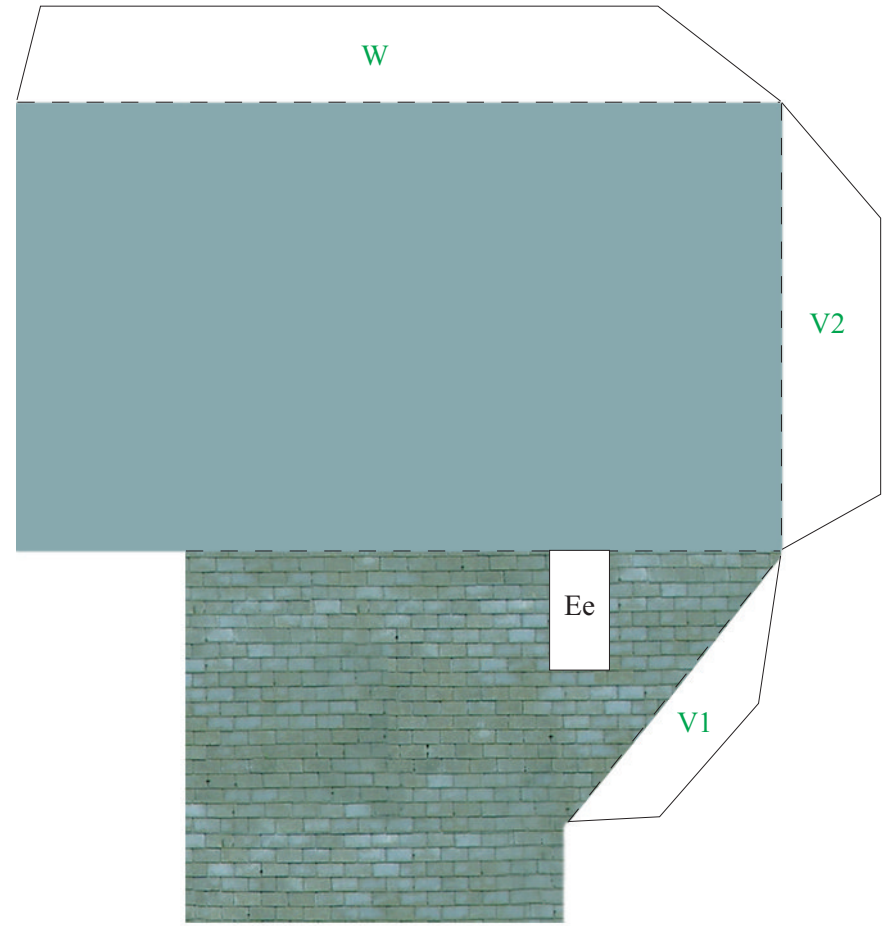
Drawn By
 Michael
 Goebel-Bain

Date
 6/07

PAGE
 8 of 10



Front Gable Roof



Front Wall Roof U

To Attach Front Gable Roof and Front Wall Roof:

1. Cut out Front Gable Roof and fold all dotted lines.
2. Glue tabs R1, R2, S1, and S2 to the Front Gable and Right Wall.
3. Glue tabs T1 and T2 to the Main Roof.
4. Cut out Front Wall Roof and fold all dotted lines.
5. Glue tab U to the Front Wall. Glue tabs V1 and V2 to the Front Gable Roof. Glue tab W to the Main Roof.

To Tower Third Floor and add Tower Roof:

1. Cut out Third Floor Ceiling and Tower Third Floor/ Third Floor Base and fold all dotted lines.
2. Form Tower Third Floor to Third Floor Base and glue tabs X1 through X5 .
3. Form top of Tower Third Floor to Third Floor Ceiling and glue tabs Y1 through Y9.
4. Glue Third Floor Base to Tower Entry using tabs Z1 through Z3. And glue overlapping Third Floor Ceiling on top of the Front Wall Roof.
5. Cut out Tower Roof and fold all dotted lines.
6. Form into a cone and glue tab Aa in place.
7. Attach Tower Roof to Third Floor Ceiling using tabs Bb1 through Bb9.

BUILD YOUR OWN ILLINOIS MAIN STREET



ILLINOIS MAIN STREET

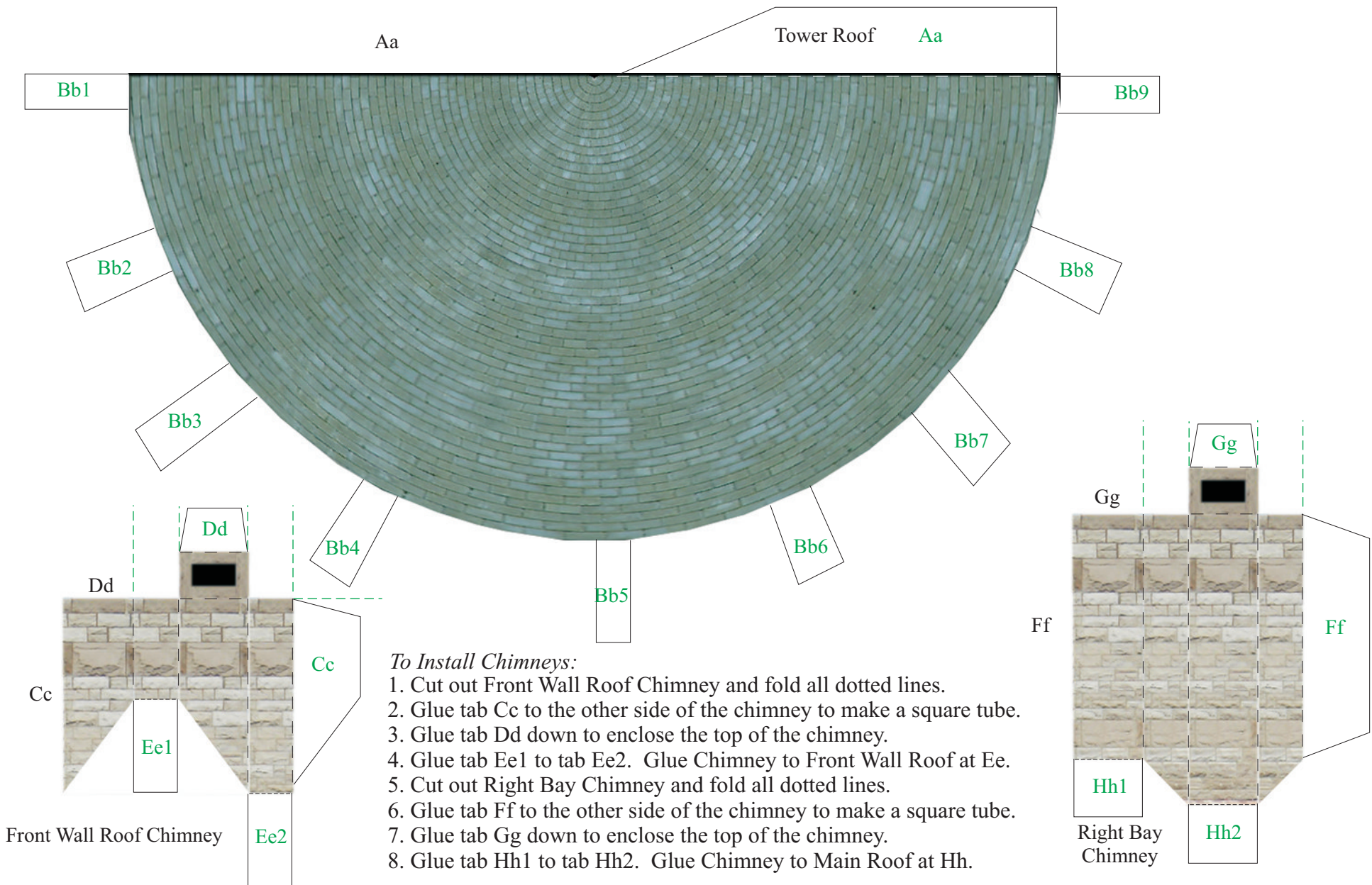
ILLINOIS HISTORIC PRESERVATION AGENCY
 One Old State Capitol Plaza Springfield, Illinois 62701 217.782.4836
 OFFICE OF LIEUTENANT GOVERNOR PAT QUINN
www.illinois-history.gov www.illinoismainstreet.org

GARDNER MUSEUM
 QUINCY, IL
www.buildyourownmainstreet.com

Drawn By
 Michael
 Goebel-Bain

Date
 6/07

PAGE
 9 of 10



To Install Chimneys:

1. Cut out Front Wall Roof Chimney and fold all dotted lines.
2. Glue tab Cc to the other side of the chimney to make a square tube.
3. Glue tab Dd down to enclose the top of the chimney.
4. Glue tab Ee1 to tab Ee2. Glue Chimney to Front Wall Roof at Ee.
5. Cut out Right Bay Chimney and fold all dotted lines.
6. Glue tab Ff to the other side of the chimney to make a square tube.
7. Glue tab Gg down to enclose the top of the chimney.
8. Glue tab Hh1 to tab Hh2. Glue Chimney to Main Roof at Hh.

BUILD YOUR OWN ILLINOIS MAIN STREET



ILLINOIS MAIN STREET

ILLINOIS HISTORIC PRESERVATION AGENCY
 One Old State Capitol Plaza Springfield, Illinois 62701 217.782.4836
 OFFICE OF LIEUTENANT GOVERNOR PAT QUINN
www.illinois-history.gov www.illinoismainstreet.org

GARDNER MUSEUM
 QUINCY, IL
www.buildyourownmainstreet.com

Drawn By
 Michael
 Goebel-Bain
 Date
 6/07

PAGE
 10 of 10