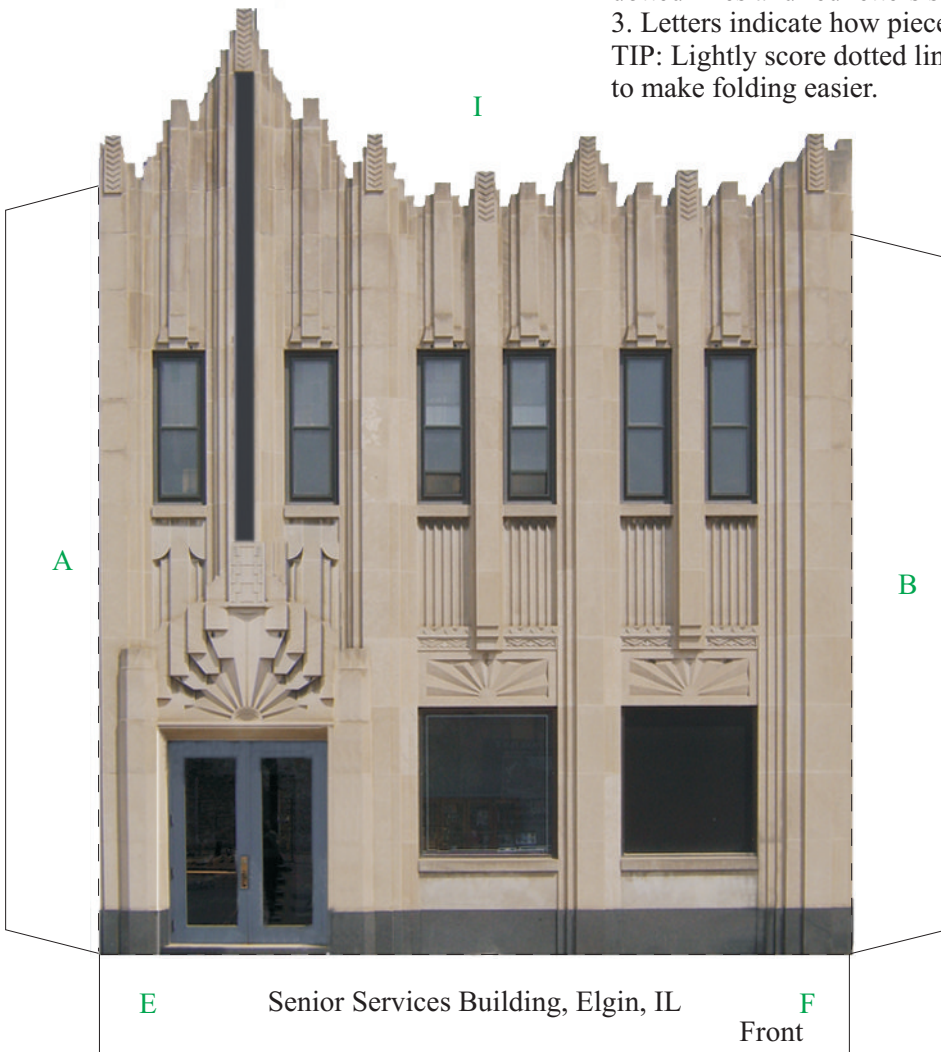


**Directions:**

*Basic Directions:*

1. Be careful to cut around all tabs.
  2. Dotted lines are to be folded. Green dotted lines and green letters should be folded backward. Red dotted lines and red letters should be folded forward.
  3. Letters indicate how pieces should fit together.
- TIP: Lightly score dotted lines before cutting piece out to make folding easier.



Senior Services Building, Elgin, IL

Front

*To Create the Four Building Sides:*

1. Cut out Front, Left Side, Right Side, and Rear pieces.
2. Fold all dotted lines.
3. Glue tabs A, B, C and D to matching locations on sides.
4. Glue tabs E, F, G, and H to create a base.



Image of existing building.



Image of completed model.

**BUILD YOUR OWN ILLINOIS MAIN STREET**



**ILLINOIS MAIN STREET**

ILLINOIS HISTORIC PRESERVATION AGENCY  
 One Old State Capitol Plaza Springfield, Illinois 62701 217.782.4836  
 OFFICE OF LIEUTENANT GOVERNOR PAT QUINN  
[www.illinois-history.gov](http://www.illinois-history.gov) [www.illinoismainstreet.org](http://www.illinoismainstreet.org)

**SENIOR SERVICES BUILDING  
 ELGIN, IL**

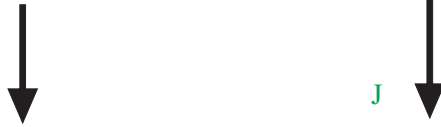
[www.builyourownmainstreet.com](http://www.builyourownmainstreet.com)

Drawn By  
 Michael  
 Goebel-Bain

Date  
 6/07

**PAGE  
 1 of 6**

Cut along three dotted white lines and fold flap open to create open awning windows.



J



D

A

H [www.buildyourownmainstreet.com](http://www.buildyourownmainstreet.com) [www.illinois-history.gov](http://www.illinois-history.gov) [www.illinoismainstreet.org](http://www.illinoismainstreet.org) Left Side E

# BUILD YOUR OWN ILLINOIS MAIN STREET



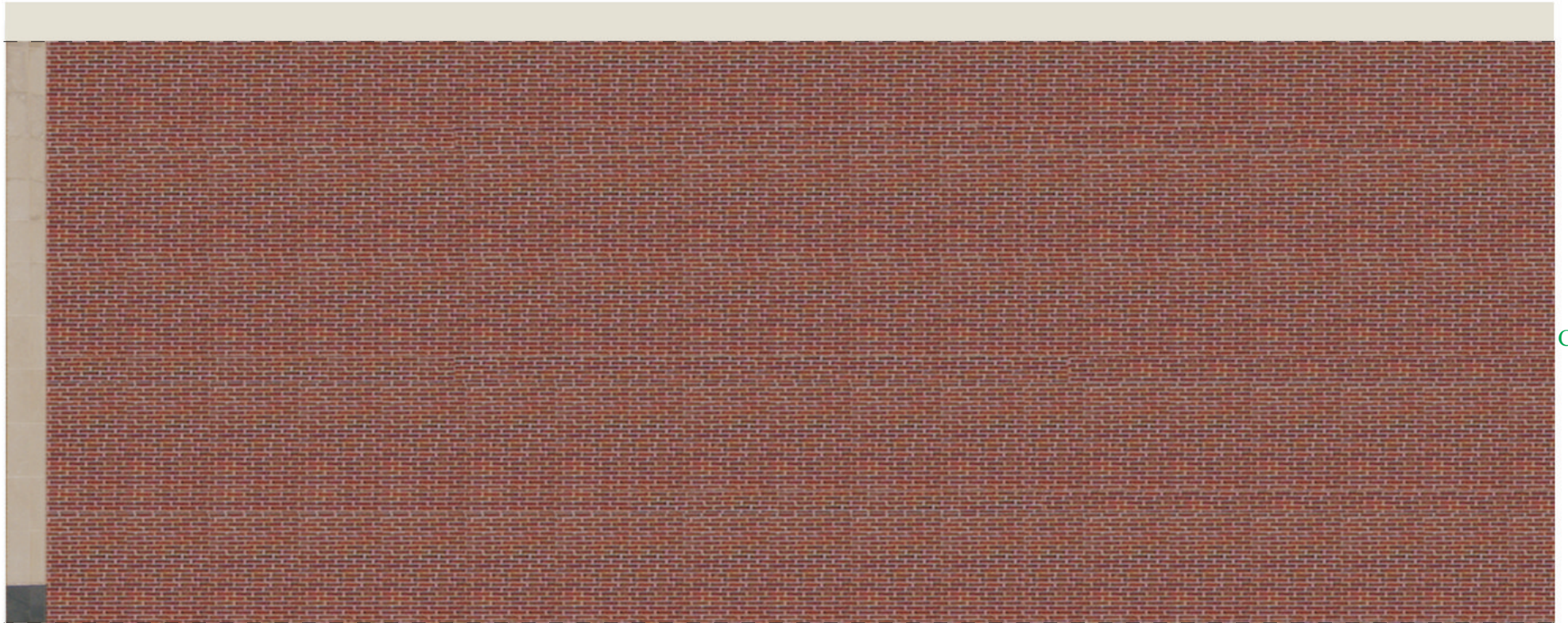
**ILLINOIS MAIN STREET**  
ILLINOIS HISTORIC PRESERVATION AGENCY  
One Old State Capitol Plaza Springfield, Illinois 62701 217.782.4836  
OFFICE OF LIEUTENANT GOVERNOR PAT QUINN  
[www.illinois-history.gov](http://www.illinois-history.gov) [www.illinoismainstreet.org](http://www.illinoismainstreet.org)

**SENIOR SERVICES BUILDING**  
ELGIN, IL  
[www.buildyourownmainstreet.com](http://www.buildyourownmainstreet.com)

Drawn By  
Michael  
Goebel-Bain  
Date  
6/07

**PAGE**  
2 of 6

K



F

© 2007 ILLINOIS HISTORIC PRESERVATION AGENCY

Right Side

G

# BUILD YOUR OWN ILLINOIS MAIN STREET



## ILLINOIS MAIN STREET

ILLINOIS HISTORIC PRESERVATION AGENCY  
 One Old State Capitol Plaza Springfield, Illinois 62701 217.782.4836  
 OFFICE OF LIEUTENANT GOVERNOR PAT QUINN  
[www.illinois-history.gov](http://www.illinois-history.gov) [www.illinoismainstreet.org](http://www.illinoismainstreet.org)

SENIOR SERVICES BUILDING  
 ELGIN, IL

[www.buildyourownmainstreet.com](http://www.buildyourownmainstreet.com)

Drawn By  
 Michael  
 Goebel-Bain

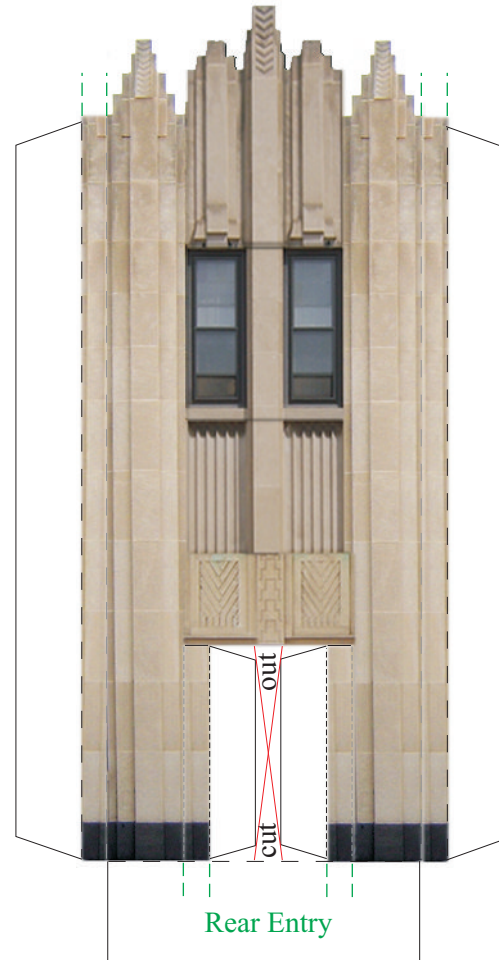
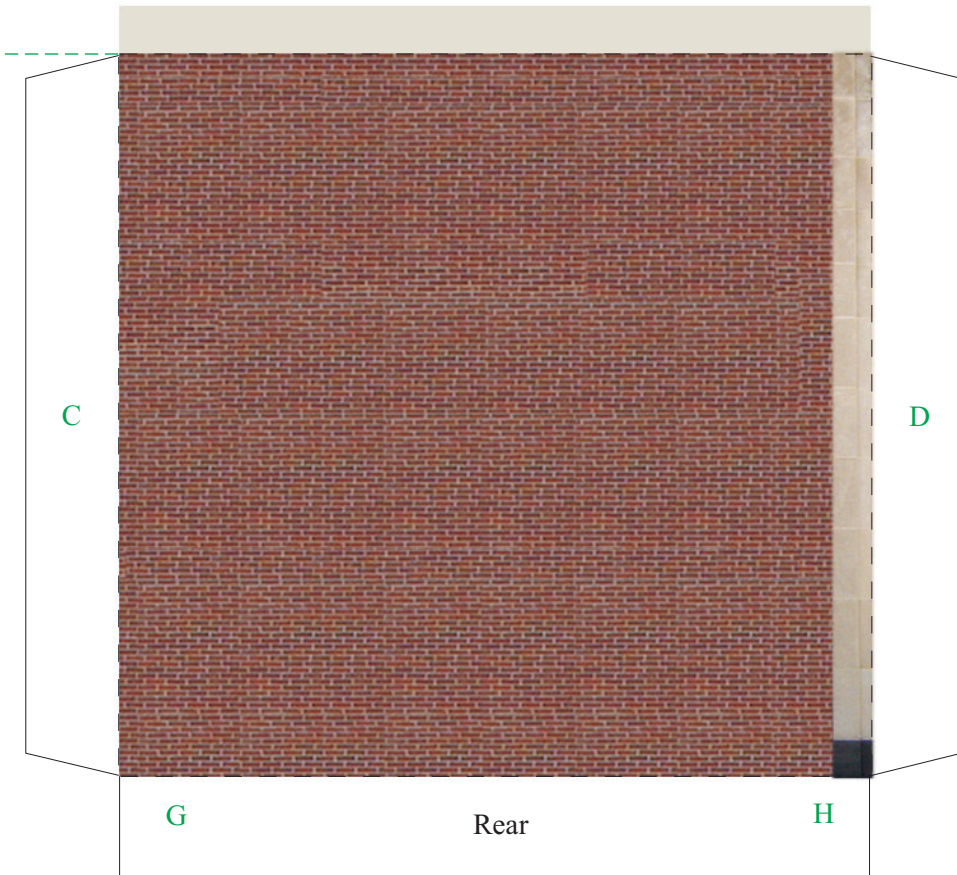
Date  
 6/07

PAGE  
 3 of 6

*To Install Projecting Entry Pieces:*

1. If you wish to skip this section, go on to Installing the Roof.
2. Cut out the Rear Entry and the combined Front Entry and Left Side Entry.
3. Fold at all lines.
4. Center the Entry pieces over the matching section of the main wall.
5. The doors of the main wall will appear through the opening of each Entry.

L



# BUILD YOUR OWN ILLINOIS MAIN STREET



## ILLINOIS MAIN STREET

ILLINOIS HISTORIC PRESERVATION AGENCY  
One Old State Capitol Plaza Springfield, Illinois 62701 217.782.4836  
OFFICE OF LIEUTENANT GOVERNOR PAT QUINN  
[www.illinois-history.gov](http://www.illinois-history.gov) [www.illinoismainstreet.org](http://www.illinoismainstreet.org)

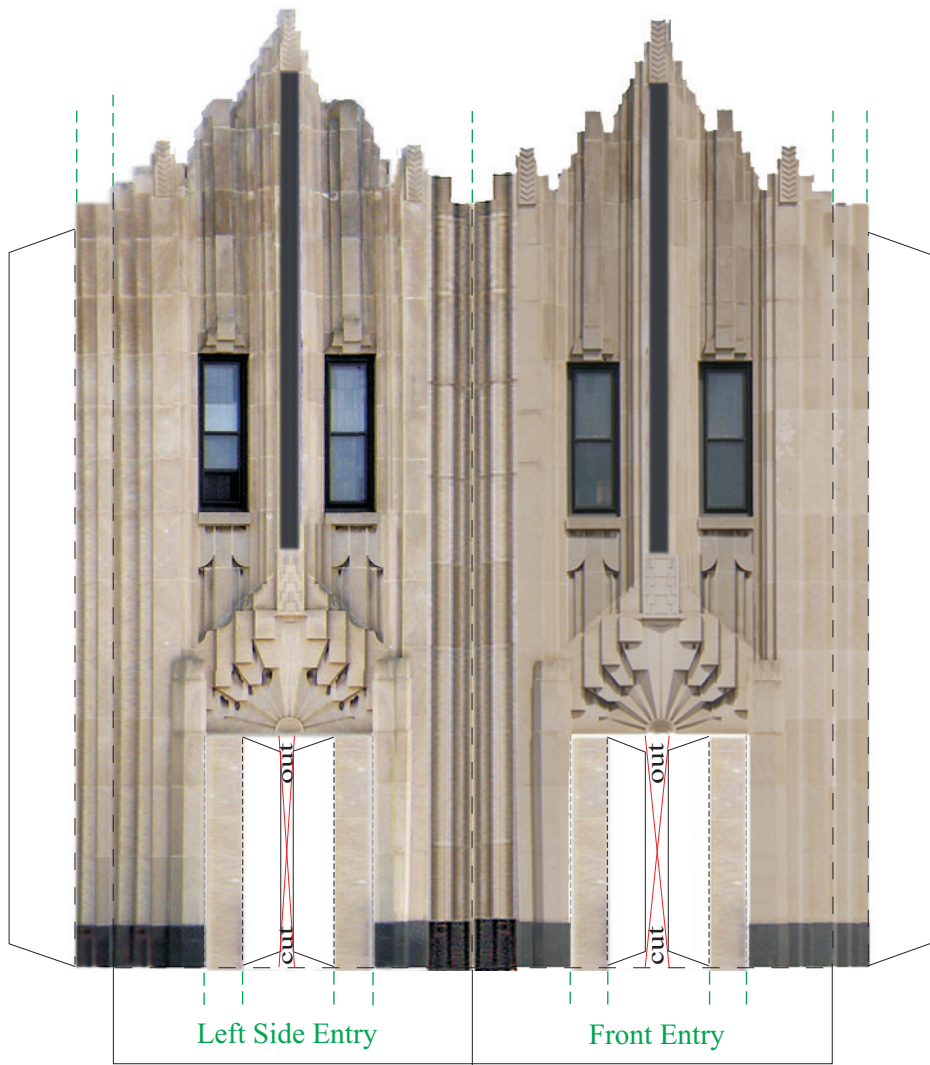
SENIOR SERVICES BUILDING  
ELGIN, IL

[www.buildyourownmainstreet.com](http://www.buildyourownmainstreet.com)

Drawn By  
Michael  
Goebel-Bain

Date  
6/07

PAGE  
4 of 6



# BUILD YOUR OWN ILLINOIS MAIN STREET



## ILLINOIS MAIN STREET

ILLINOIS HISTORIC PRESERVATION AGENCY  
 One Old State Capitol Plaza Springfield, Illinois 62701 217.782.4836  
 OFFICE OF LIEUTENANT GOVERNOR PAT QUINN  
[www.illinois-history.gov](http://www.illinois-history.gov) [www.illinoismainstreet.org](http://www.illinoismainstreet.org)

SENIOR SERVICES BUILDING  
 ELGIN, IL

[www.builyourownmainstreet.com](http://www.builyourownmainstreet.com)

Drawn By  
 Michael  
 Goebel-Bain

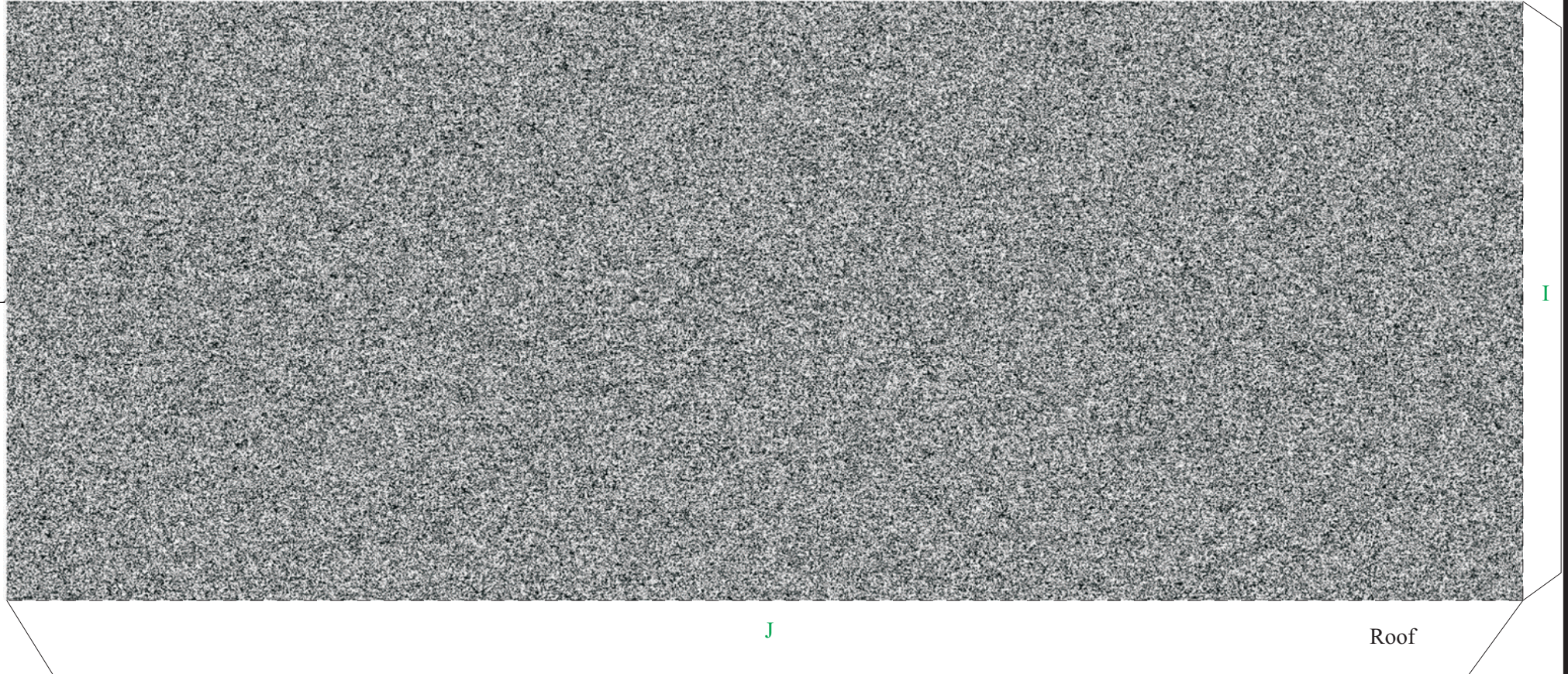
Date  
 6/07

PAGE  
 5 of 6

*To Install the Roof:*

1. Cut out Roof and Fold.
2. Roof will be flat.
3. Glue sides marked K and L to underside of matching parapets.
4. Glue tabs I and J to the back side of the Front and Left Side.

K



Roof

# BUILD YOUR OWN ILLINOIS MAIN STREET



## ILLINOIS MAIN STREET

ILLINOIS HISTORIC PRESERVATION AGENCY  
One Old State Capitol Plaza Springfield, Illinois 62701 217.782.4836  
OFFICE OF LIEUTENANT GOVERNOR PAT QUINN  
[www.illinois-history.gov](http://www.illinois-history.gov) [www.illinoismainstreet.org](http://www.illinoismainstreet.org)

SENIOR SERVICES BUILDING  
ELGIN, IL

[www.buildyourownmainstreet.com](http://www.buildyourownmainstreet.com)

Drawn By  
Michael  
Goebel-Bain

Date  
6/07

PAGE  
6 of 6