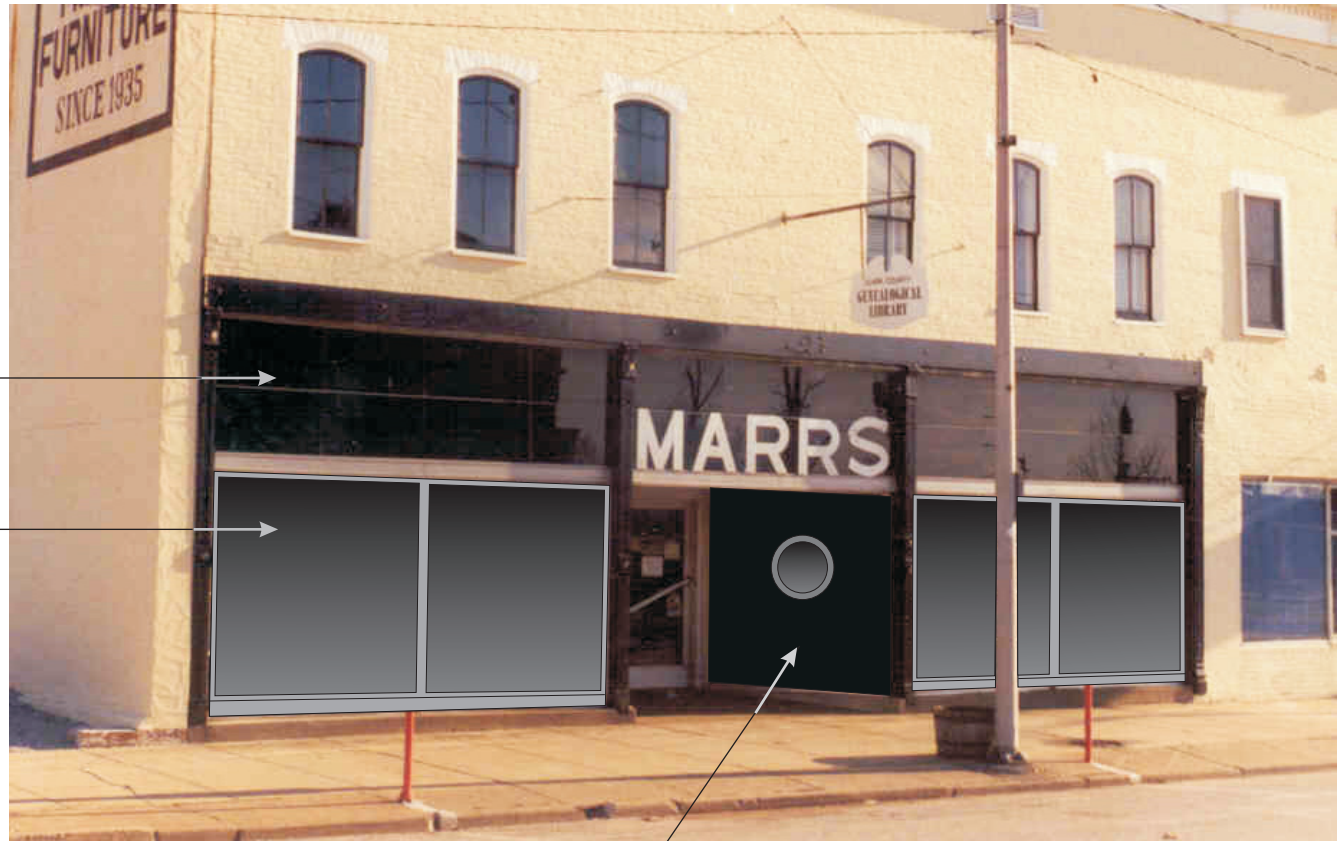


PROPOSED DESIGN

EXISTING STRUCTURAL  
GLASS TO REMAIN

NEW, CLEAR, ANODIZED  
ALUMINUM STOREFRONT  
WINDOW SYSTEM

NEW STUD WALLS ON BOTH SIDES OF DOOR  
WITH STRUCTURAL GLASS FINISH OR "NU-ALUM"  
PRELAMINATED SMOOTH PANELING  
SYSTEM, WITH ROUND WINDOWS.



EXISTING



ILLINOIS MAIN STREET

ILLINOIS HISTORIC PRESERVATION AGENCY  
500 East Madison Street Springfield, Illinois 62701 217.782.4836  
DEPARTMENT OF COMMERCE AND COMMUNITY AFFAIRS

CLARK COUNTY  
GENEALOGICAL LIBRARY

521 LOCUST STREET MARSHALL, IL

Drawn By  
CK

Project Number  
2001028

Date  
10/01

Sheet Of  
1 1