

PARAPET CAP

FOLD AND GLUE THIS ONTO THE SMALL TABS BELOW MAKING THE PARAPET WALL

CUT SLOTS FOR AWNING

FOLD THESE BACK HORIZONTALLY

GLUE TAB "D" TO BACK HERE

FOLD THESE FLAT FOR GLUING THE TURRET ROOF

CUT THIS PIECE OUT AND GLUE TAB 'A' BEHIND HERE CONTINUING THE TOP OF THE TURRET. (TABS B & C ARE FOR THE ROOF AND TAB D FINISHES THE TURRET)

FOLD AND GLUE TO THE INSIDE FRONT OF THE BRICK SIDE WALL

CUT OUT OPENING FOR DOOR

FOLD UNDER HERE AND GLUE AT THE CORNERS

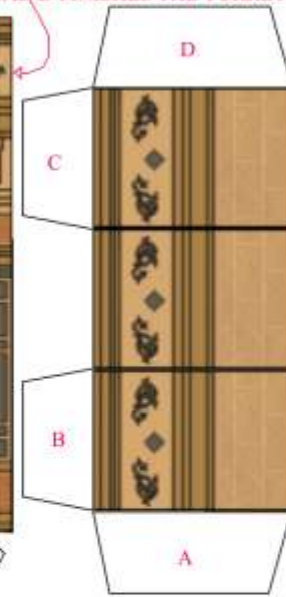
© 2005 ILLINOIS HISTORIC PRESERVATION AGENCY

GLUE TO LOWER SIDE (THE MATCHING WINDOW)

CUT HERE ALONG THE DOTTED LINE AND FOLD THE 8 SECTIONS TO MAKE THE TURRET AS AN OCTAGON

GLUE 4 TABS TO THE INSIDE OF THE FIVE FULL TURRET WALLS AND 2 LONG TABS TO INSIDE OF THE FRONT AND THE SIDE WALL.

SIGN: GLUE SIGN PART BACK TO BACK AND GLUE TABS THROUGH SLOT ON FRONT FACADE ABOVE THE MAIN DOOR.



BUILD YOUR OWN ILLINOIS MAIN STREET

ILLINOIS MAIN STREET
ILLINOIS HISTORIC PRESERVATION AGENCY
1 Old State Capitol Plaza Springfield, IL 62701 417.784.4616
OFFICE OF LIEUTENANT GOVERNOR PAT QUINN
www.illinois-history.gov www.illinoismainstreet.org

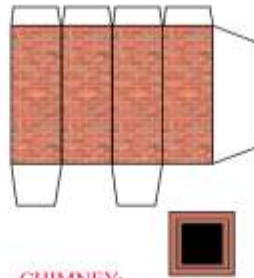
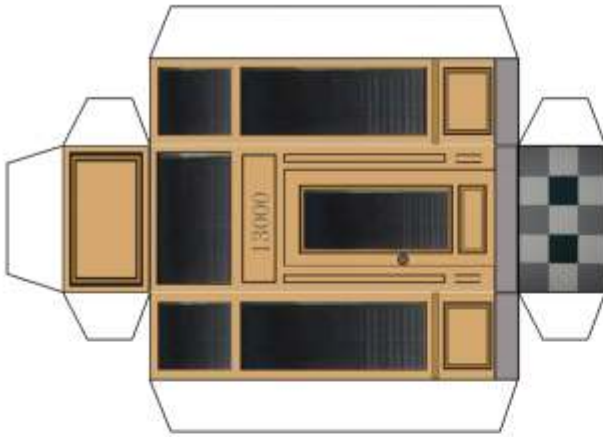
STEIN BUILDING
BLUE ISLAND, ILLINOIS
www.buildyourmainstreet.com

PAGE
1 of 5



RECESSED ENTRY:

1. CUT OUT.
2. FOLD SO THAT ALL 5 PRINTED PORTIONS ARE ON THE INSIDE.
3. FOLD AND GLUE THE FLOOR FLAT.
4. GLUE FLOOR TABS TO THE BACK OF THE SIDES.
5. REPEAT STEPS 3 AND 4 FOR THE CEILING AREA.
6. GLUE THE THREE REMAINING TABS TO THE BACK OF THE FRONT FACADE.



CHIMNEY:

1. CUT OUT AND GLUE THE 4 SECTIONS WITH THE LARGE TAB.
2. FOLD OVER THE 4 SMALL TABS AND GLUE ON THE TOP SQUARE.
3. GLUE THE 2 MEDIUM SIZED TABS INTO THE OPENING ON THE ROOF.



GLUE THESE PIECES ONTO THE TABS BELOW MAKING THE FOUR PARAPET WALL SECTION.



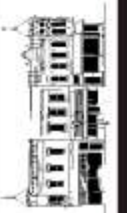
FOLD UNDER AND GLUE AT THE CORNERS OF THE OTHER SIDES

BUILD YOUR OWN ILLINOIS MAIN STREET

ILLINOIS MAIN STREET
ILLINOIS HISTORIC PRESERVATION AGENCY
1 Old State Capitol Plaza Springfield, IL 62701 317.782.4896
OFFICE OF LIEUTENANT GOVERNOR PAT QUINN
www.illinois-history.gov www.illinoismainstreet.org

STEIN BUILDING
BLUE ISLAND, ILLINOIS
www.buildyourmainstreet.com

PAGE
2 of 5



- AWNING:**
1. CUT OUT AS ONE PIECE.
 2. FOLD AT THE MAIN SEAM SO IT WILL WRAP AROUND THE CORNER.
 3. FOLD THE SMALL FLAPS AND GLUE THE SMALL TAB BETWEEN THEM TOGETHER.
 4. FOLD THE LARGE TABS UP AND GLUE THEM INTO THE SLOTS ON THE FRONT AND SIDE.

FOLD AND GLUE THIS PIECE WITH AN OVERHANG ONTO THE TABS BELOW MAKING A PARAPET WALL.

FOLD HERE HORIZONTALLY

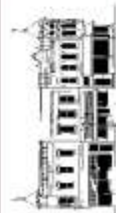
CUT SLOT FOR AWNING



FOLD UNDER AND GLUE AT THE CORNERS

www.buildyourownmainstreet.com www.illinois-history.gov www.illinoismainstreet.org

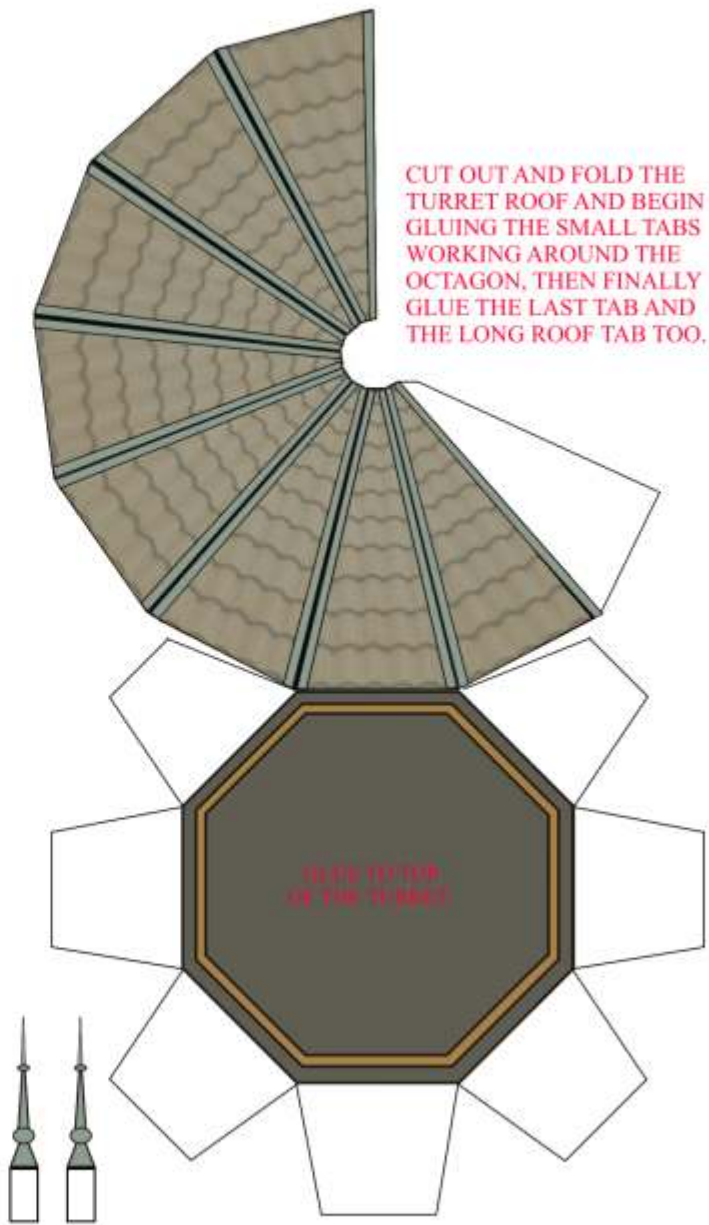
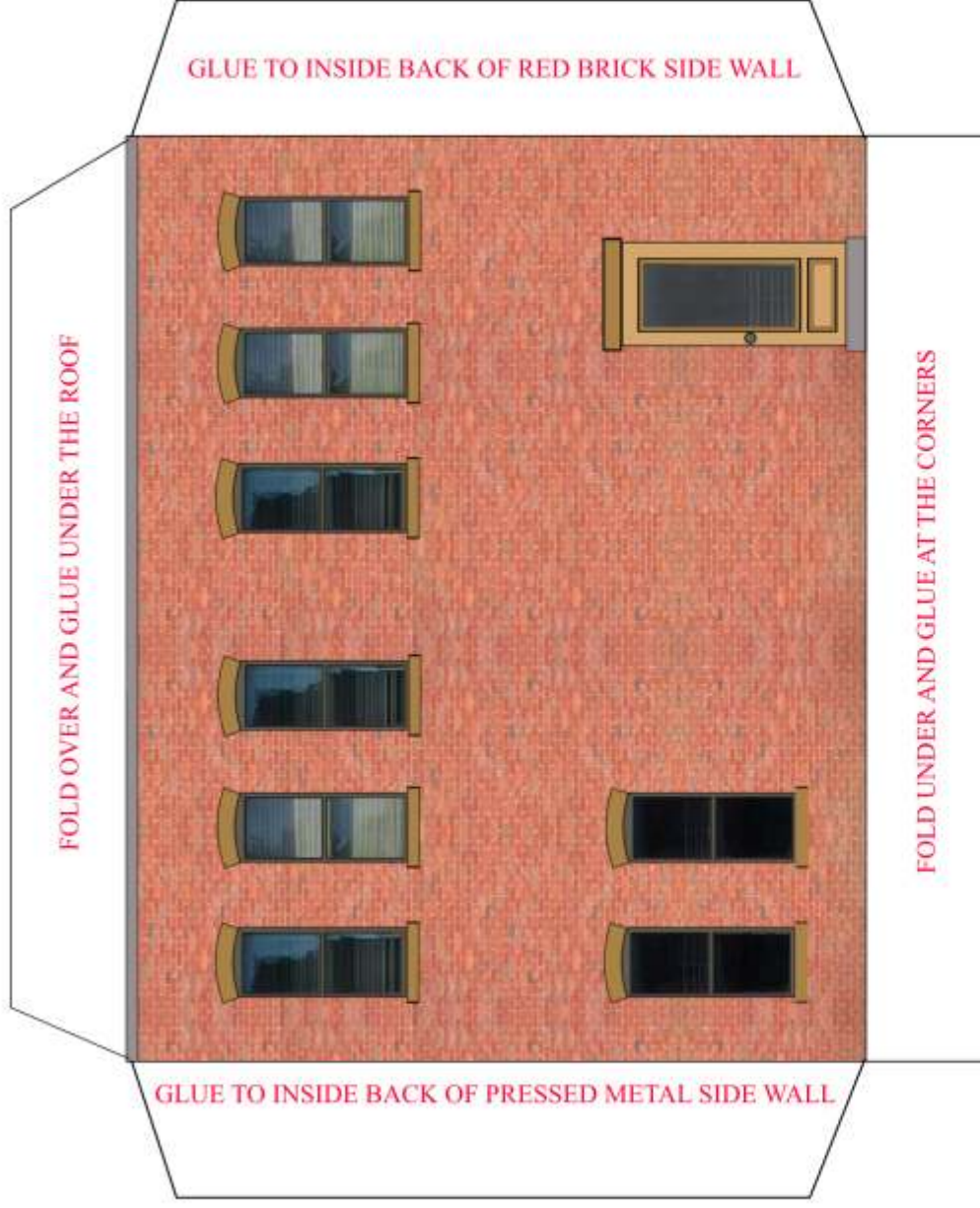
BUILD YOUR OWN ILLINOIS MAIN STREET



ILLINOIS MAIN STREET
ILLINOIS HISTORIC PRESERVATION AGENCY
1 Old State Capitol Plaza • Springfield, IL 62701 317.265.4836
OFFICE OF LIEUTENANT GOVERNOR PAT QUINN
www.illinois-history.gov www.illinoismainstreet.org

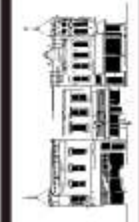
STEIN BUILDING
BLUE ISLAND, ILLINOIS
www.buildyourownmainstreet.com

PAGE
3 of 5



DECORATIVE CAP: CUT OUT AND GLUE JUST THE GREEN PORTION BACK TO BACK THEN FOLD AND GLUE THE WHITE TABS UNDER THE ROOF AREAS.

BUILD YOUR OWN ILLINOIS MAIN STREET



ILLINOIS MAIN STREET
 ILLINOIS HISTORIC PRESERVATION AGENCY
 1 Old State Capitol Plaza Springfield, IL 62703-4896
 OFFICE OF LIEUTENANT GOVERNOR PAT QUINN
 www.illinois-history.gov www.illinoismainstreet.org

STEIN BUILDING
 BLUE ISLAND, ILLINOIS
 www.buildyourownmainstreet.com

THE STREET FACADES OF THIS CORNER BUILDING IN BLUE ISLAND ARE CLAD IN PRESSED SHEET METAL TO LOOK LIKE CUT STONE. THE TURRET, CORNICE, CAST IRON STOREFRONT, AND DECORATIVE DETAILS MAKE THIS AN EXCELLENT EXAMPLE OF THE QUEEN ANNE STYLE, WHICH WAS VERY POPULAR AT THE END OF THE 19th CENTURY FOR CORNER MAIN STREET BUILDINGS IN ILLINOIS TOWNS.

FOLD AND GLUE TO INSIDE OF SIDE WALL

FOLD AND GLUE TO THE INSIDE OF THE FRONT

CUT
OUT

FOLD AND GLUE TO INSIDE OF SIDE WALL

