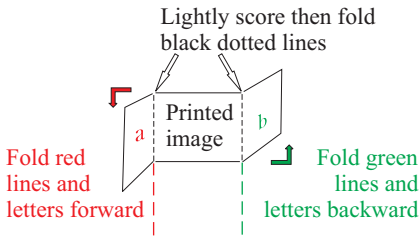


**Basic Directions:**



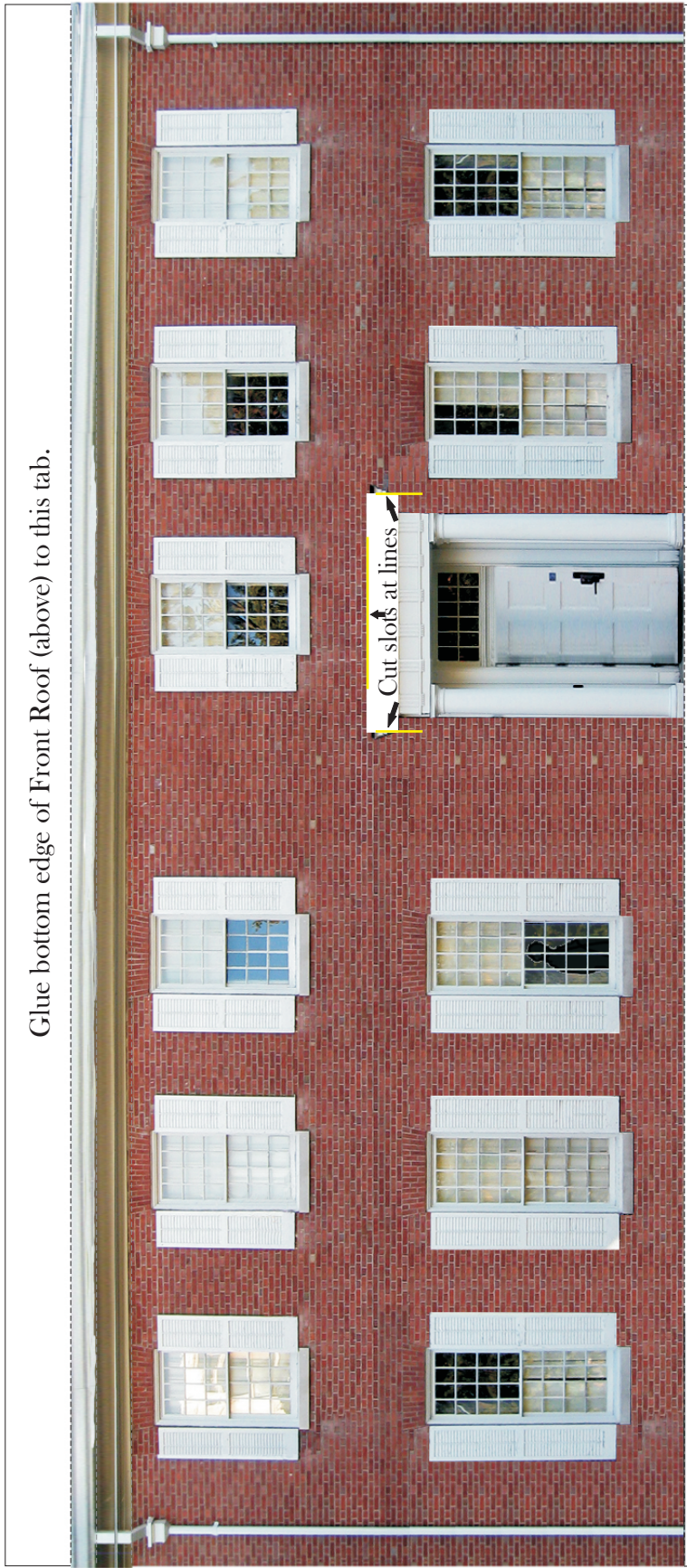
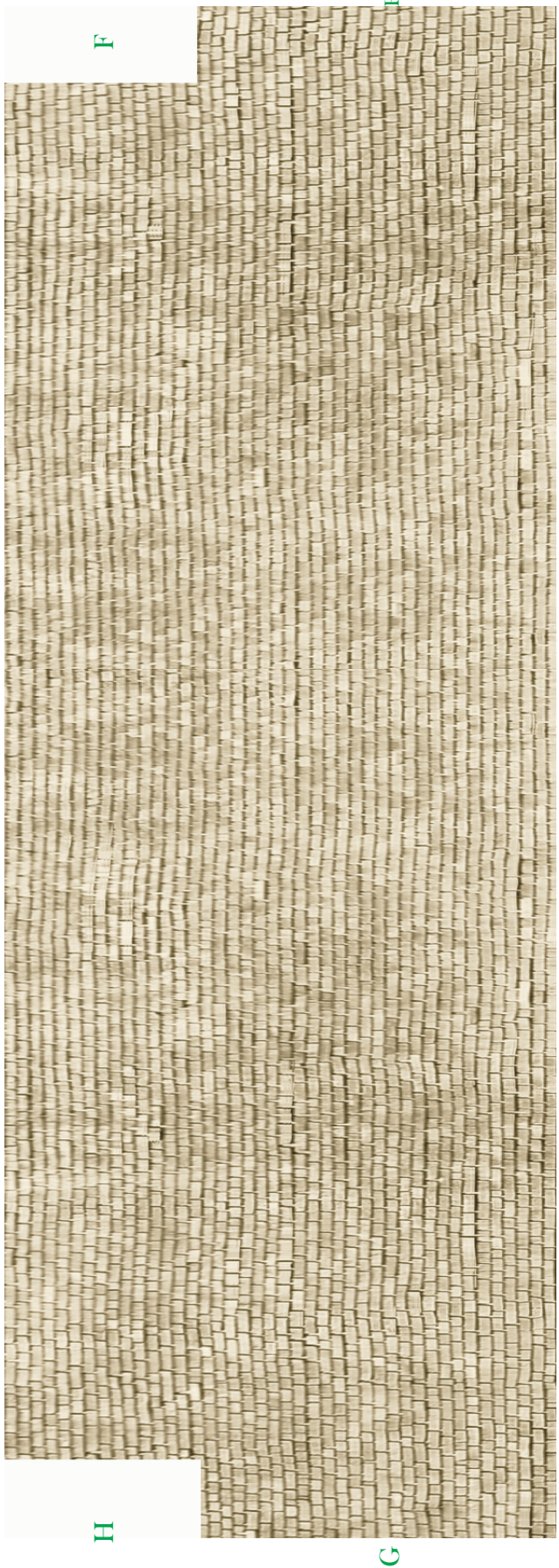
Front of completed model

**To Assemble Walls and Chimneys:**

1. Cut out the four Wall pieces. Fold all dotted lines.
2. Glue each end wall's chimney section together using tabs a-f, Right End and tabs g-l, Left End.
3. Glue the Front onto the Left and Right Sides using tabs A and B.
4. Glue the Back onto the sides using tabs C and D.



**BUILD YOUR OWN LINCOLN SITES**



Glue bottom edge of Front Roof (above) to this tab.

Front Wall

Glue Porch Floor tab here, with brick showing.

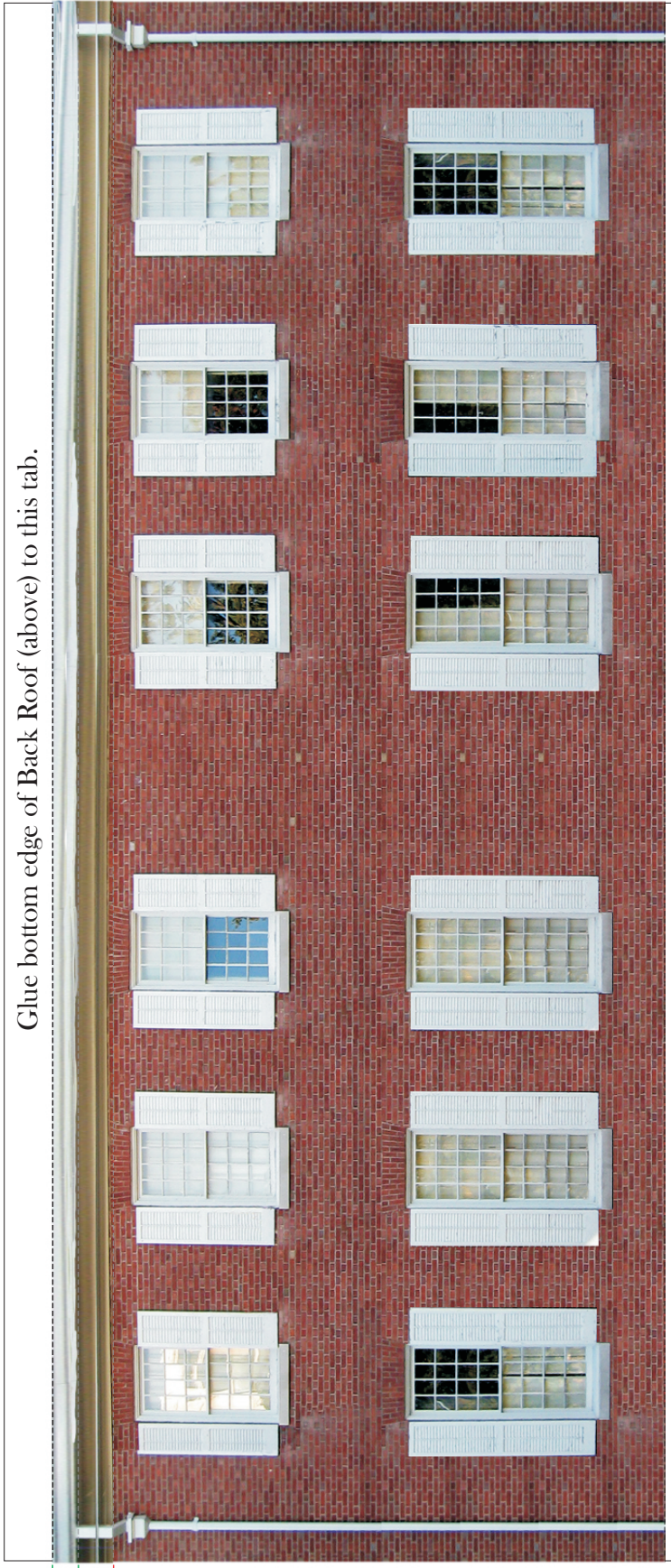
Beecher Hall, Illinois College, Jacksonville, Illinois

# BUILD YOUR OWN LINCOLN SITES

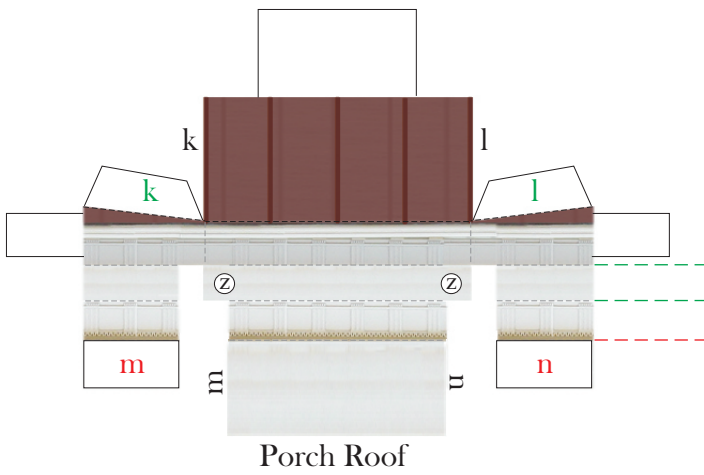
Glue top edge of Front Roof to this tab. The top edge of the Front Roof will project about 3/16 over this roof.



Glue bottom edge of Back Roof (above) to this tab.



# BUILD YOUR OWN LINCOLN SITES



*To Assemble Porch Floor, Porch Roof, Columns, and Roofs:*

1. Cut out the Porch Floor. Glue the Porch Floor tab under the Front Wall base tab with the brick showing.
2. Cut out the Porch Roof and glue together using tabs k-n.
3. Insert the three Porch Roof tabs through the slots cut in the Front Wall. Bend over and glue to the inner side of the Front Wall.
4. Cut out the Columns. Glue to form cylinders. Glue in place between the Porch Roof and Porch Floor at circles marked y and z.
5. Cut the Front and Back Roofs. Glue the Front Roof to the Back Roof at the ridge first. The Front Roof will project past the ridge slightly.
6. Glue Roofs into place at the Front and Back Wall top tabs and side wall tabs E - L.



## BUILD YOUR OWN LINCOLN SITES