



NOTE: The Illinois MAIN STREET Program, through the Illinois Historic Preservation Agency, has provided this free design assistance to qualified property/business owners in the officially designated MAIN STREET project areas. The rendering on this sheet is a conceptual view of the facade renovation based on information supplied to the staff architects. Should obscured architectural details or problems be revealed during the work, the local project manager and/or the staff architects should be consulted.

PROPOSED DESIGN



ILLINOIS MAIN STREET

ILLINOIS HISTORIC PRESERVATION AGENCY
 One Old State Capitol Plaza Springfield, Illinois 62701 217.782.4836
 OFFICE OF LIEUTENANT GOVERNOR PAT QUINN

LUHES BUILDINGS

606,608,610,612 North Main Street, Bloomington

ELEVATION

Not to Scale

Drawn By AMB	Project Number 2005058
Date 3/06	Sheet Of 1 4

PAINT COLORS:
SHERWIN WILLIAMS PAINTS



Sable
(SW 6083)



Tricorn Black
(SW 6258)



Ivory Lace
(SW 7013)



Spicy Hue
(SW 6342)



PROPOSED DESIGN



ILLINOIS MAIN STREET

ILLINOIS HISTORIC PRESERVATION AGENCY
1 Old State Capitol Plaza Springfield, IL 62701 217.782.4836
OFFICE OF LIEUTENANT GOVERNOR PAT QUINN

606 North Main
Bloomington

Drawn By
AMB

Date
3/06

Project
Number
2005058

Sheet Of
2 4

PAINT COLORS:
SHERWIN WILLIAMS PAINTS

Granite Peak
(SW 6250)



Warm Stone
(SW 7032)



Soften Green
(SW 6177)



Spicy Hue
(SW 6342)



PROPOSED DESIGN



ILLINOIS MAIN STREET

ILLINOIS HISTORIC PRESERVATION AGENCY
1 Old State Capitol Plaza Springfield, IL 62701 217.782.4836
OFFICE OF LIEUTENANT GOVERNOR PAT QUINN

608 North Main
Bloomington

Drawn By
AMB

Date
3/06

Project
Number
2005058

Sheet Of
3 4

PAINT COLORS:
SHERWIN WILLIAMS PAINTS

Warm Stone
(SW 7032)



Black Swan
(SW 6279)



Classic Yellow
(SW 2865)



Bee
(SW 6683)



PROPOSED DESIGN



ILLINOIS MAIN STREET

ILLINOIS HISTORIC PRESERVATION AGENCY
1 Old State Capitol Plaza Springfield, IL 62701 217.782.4836
OFFICE OF LIEUTENANT GOVERNOR PAT QUINN

610,612 North Main
Bloomington

Drawn By
AMB

Date
3/06

Project
Number
2005058

Sheet Of
4 4

PAINT COLORS: SHERWIN WILLIAMS PAINTS

Warm Stone
(SW 7032)



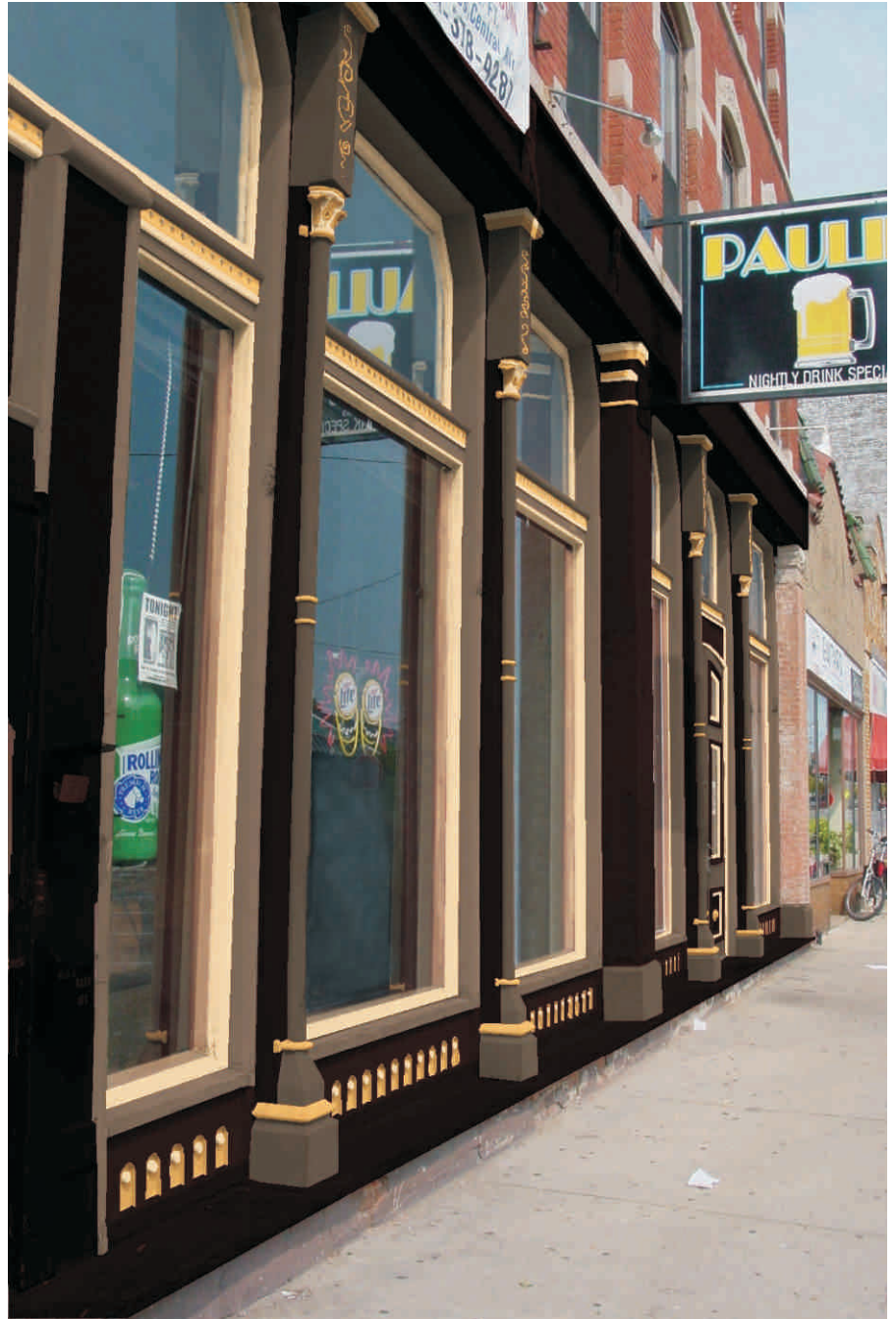
Black Swan
(SW 6279)



Classic Yellow
(SW 2865)



Bee
(SW 6683)



PROPOSED DESIGN



ILLINOIS MAIN STREET

ILLINOIS HISTORIC PRESERVATION AGENCY
1 Old State Capitol Plaza Springfield, IL 62701 217.782.4836
OFFICE OF LIEUTENANT GOVERNOR PAT QUINN

610,612 North Main
Bloomington

Drawn By
AMB

Date
3/06

Project
Number
2005058

Sheet Of
3 3



The Smoker's Den

The Smoker's Den

- CIGARETTES
- CIGARS
- IMPORTS
- PIPES
- ROLL YOUR OWN
- ACCESSORIES
- NOVELTIES
- VIP CARDS

OPEN

PREMIER CIGARS

BUD LIGHT

19.99

JournalShip

12.99

29.45

13.84

13.84

606/60848