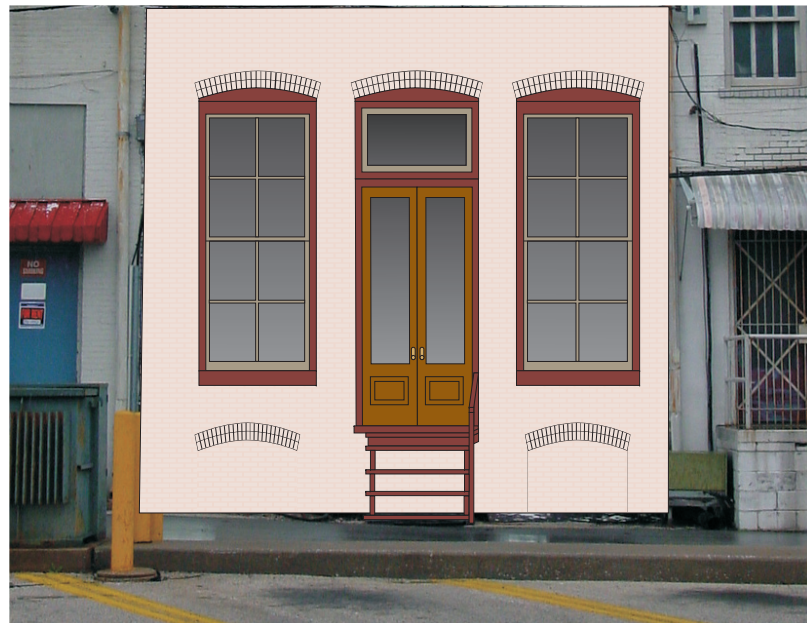




EXISTING CONDITIONS



PROPOSED SCHEME WITH AWNINGS



PROPOSED SCHEME WITHOUT AWNING

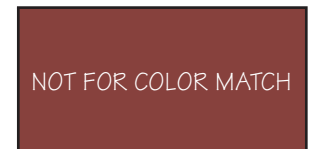
AWNING:



SUNBRELLA:

SAGE TRANSITIONAL (#4913)

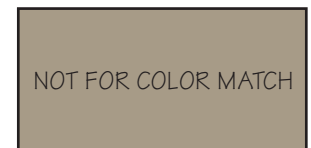
PAINT COLORS:



NOT FOR COLOR MATCH

TRIM:

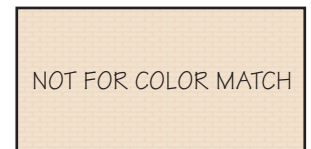
SHERWIN WILLIAMS: CARRIAGE DOOR (SW 2294)



NOT FOR COLOR MATCH

SASH:

SHERWIN WILLIAMS: ZEUS (SW 2085)



NOT FOR COLOR MATCH

BRICK:

SHERWIN WILLIAMS: COLONY BUFF (SW 2207)

NOTE: The Illinois MAIN STREET Program, through the Illinois Historic Preservation Agency, has provided this free design assistance to qualified property/business owners in the officially designated MAIN STREET project areas. The rendering on this sheet is a conceptual view of the facade renovation based on information supplied to the staff architects. Should obscured architectural details or problems be revealed during the work, the local project manager and/or the staff architects should be consulted.



ILLINOIS MAIN STREET

ILLINOIS HISTORIC PRESERVATION AGENCY  
500 East Madison Street Springfield, Illinois 62701 217.782.4836  
DEPARTMENT OF COMMERCE AND COMMUNITY AFFAIRS

#25 CENTRAL PARK PLAZA

JACKSONVILLE, IL

ELEVATION

Not to Scale

Drawn By	Project Number
CLM	2001022
Date	Sheet Of
6/01	1 1